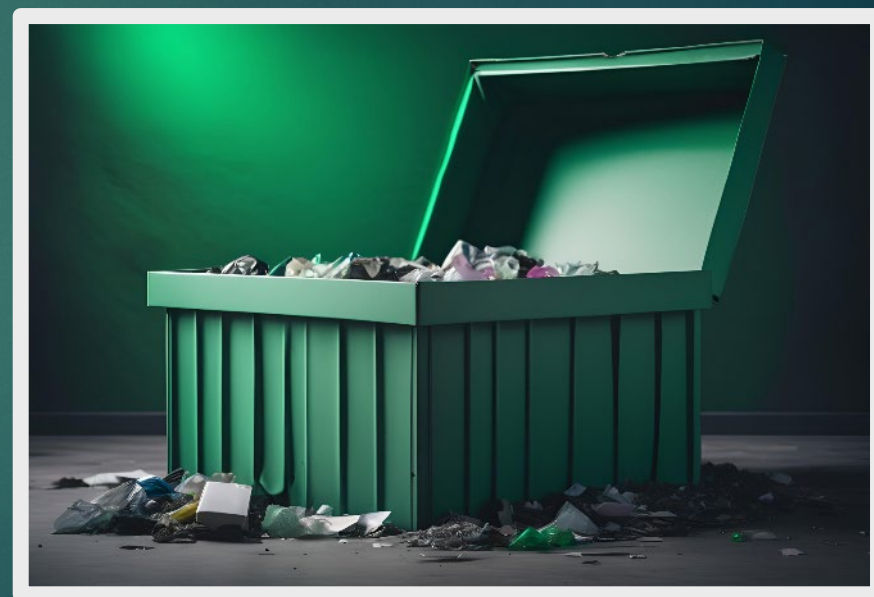




# EMAHK 2024 Competition - *Waste Challenge: Innovate to Eliminate*

## COMPETITION DETAILS



# Contents

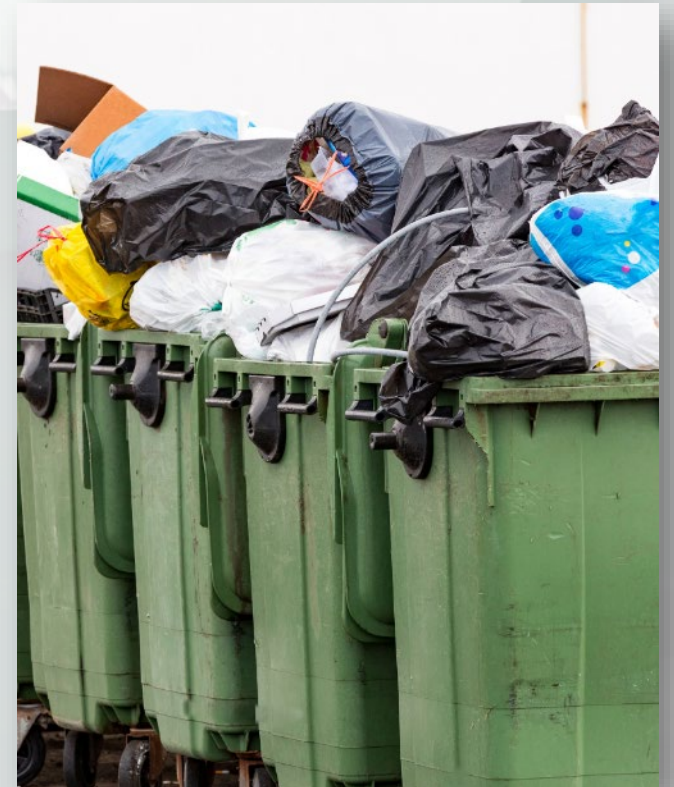
1. About EMAHK
2. The Competition
3. Benefits of Joining the Competition
4. Teams and Team Requirements
5. Cases
6. Judging Criteria
7. Judging Panel
8. Prizes
9. Fees
10. Important Dates
11. How to Join
12. Sponsors and Supporting Organizations
13. Rules and Regulations
14. Terms and Conditions
15. Contact Information

# About EMAHK

- ▶ October 2010: Founded as a Society under the Hong Kong Societies Ordinance
- ▶ March 2020: Changed legal status and became registered as a company limited by guarantee under the Companies Ordinance
- ▶ A Company Limited by Guarantee under the Companies Ordinance (Cap.622)
  - The Environmental Management Association of Hong Kong Limited
- ▶ Received Inland Revenue Department approval for tax exemption status under the Inland Revenue Ordinance (Cap. 112) Section 88
- ▶ EMAHK was also registered as a charitable organization on March 19, 2020

# Hong Kong's Waste Problem

- ▶ In 2022, the total MSW disposed at landfills was 4.06 million tonnes<sup>1</sup>, a decrease 2.0% from 2021
  - Disposal rate = 1.51/person/day
  - 61% domestic waste (2.8%↓), 39% commercial and industrial waste (0.8% ↓)
- ▶ Through the efforts of the government and various organizations, the waste problem in Hong Kong is not improving as quickly as it needs to be
- ▶ EMAHK is launching a competition to search for innovative and practical solutions to help solve this problem



# The Competition

- ▶ To arouse the interest of the community in Hong Kong's waste management problems
- ▶ Teams of 3-5 persons work on a real-world problem from a Case Sponsor to develop an innovative and practical solution and pitch the solution to the Judging Panel
- ▶ Solutions may be from various angles, including but not limited to:
  - Use of technology (IoT, AI, smart facilities, etc.)
  - Behavioural changes (education, campaigns, award schemes, etc.)
  - Operational changes (training, policy and process changes, etc.)
- ▶ Teams will enter in one of the following categories:
  1. Students Category
  2. Open Category

# Benefits of Joining the Competition

## Student Category

All participants will receive complimentary 2025 EMAHK membership



### Experience and engagement

Utilize academic knowledge in real-world applications, fostering a deeper understanding and practical proficiency



### Skills development

Develop strategic thinking, project management, and communication skills through immersive challenges



### Networking

Connect with industry leaders, opening doors to internships, mentorships, and future employment



### Recognition and career advancement

Achieve recognition that distinguishes you in academic and professional settings, supporting scholarship and career pursuits



### Other benefits

Access to expert guidance: Gain insights from experienced mentors, enhancing your approach to innovative problem-solving

# Benefits of Joining the Competition

## Open Category

All participants will receive complimentary 2025 EMAHK membership



### Experience and engagement

Address pressing waste management challenges, establishing themselves as leaders in industry innovation



### Skills development

Refine leadership, innovation, and analytical skills by tackling complex, real-world problems



### Networking

Build a robust network with industry experts and peers, expanding your professional influence and opportunities



### Recognition and career advancement

Demonstrate expertise through innovative solutions, paving the way for career growth and new ventures



### Other benefits

Impactful contributions: Drive meaningful change in waste management practices, enhancing your professional reputation and personal fulfillment

# Teams and Team Requirements

- ▶ Each team
  - 3-5 persons of at least 18 years of age
  - Nominate 1 member to be the main contact person with EMAHK
  - Enter the competition under Student or Open category (see below)
- ▶ Teams are encouraged to include members from different organizations, institutions, and disciplines
- ▶ Student category
  - For current full-time post-secondary students (may have 1 member who is not a full-time student)
  - Students from different academic institutions may be on the same team
  - Copies of valid student cards is required with the registration package to confirm eligibility
- ▶ Open category
  - For current practitioners, part-time students, and the general public
  - For teams with 2 or more members who are not full-time students



# Cases

- ▶ Each team will work with one of the Case Sponsors on a real-world problem
  - **ChinaChem Group**
    - ❑ Towards Zero Waste: How to implement circular economy for Nina Park and commercial neighbourhood
  - **Hysan Development Company Limited**
    - ❑ Innovating waste management solutions for commercial buildings at community scale
  - **Nan Fung Group**
    - ❑ Designing a closed-loop system: Connecting commercial buildings and neighborhoods for environmental and social impact
  - **The Great Eagle Group**
    - ❑ Beyond oyster-based solutions: extension programme for engagement and applications
- ▶ Briefings and site visits will be arranged in December 2024
- ▶ Selection and confirmation of the assigned cases will take place after all site visits are completed

# Judging Criteria

- ▶ All solutions will be evaluated in the following 5 areas:
  1. Impact (30%) – The expected impact of the solution through technological, operational, and/or behavioural changes
  2. Innovation and creativity (20%) – The degree of innovativeness of the solution
  3. Technical and financial feasibility (20%) – The ease of implementing the solution based on available technology and the economic feasibility of implementing the solution.
  4. Presentation and pitching (20%) – The effectiveness of the solution pitching to the Judging Panel, including both the presentation content and the pitching method.
  5. Teamwork and diversity (10%) – The degree which the team combined members with different expertise, backgrounds, or knowledge to arrive at the solution. This score also covers how team members work together during the final presentation.
  
- ▶ The scoring rubric, along with further elaboration for each area, will be provided to registered teams

# Judging Panel

- ▶ Mr. Simon Ng – Chair, EMAHK
- ▶ Prof. Ar. Wong Kam Sing, GBS, JP – Chairman, Wu Zhi Qiao; Former Secretary for the Environment (2012-2022)
- ▶ Mr. Edwin Lau – Founder and Executive Director, The Green Earth
- ▶ Senior Management from Case Sponsors

# Prizes

- ▶ Prizes are awarded for the following:
  - ❖ **Outstanding Solutions Award:** Student Category
  - ❖ **Outstanding Solutions Award:** Open Category
  - ❖ **Waste Challenger:** Most innovative solution
  - ❖ **Waste Eliminator:** Most impactful solution
  - ❖ **Best Business Model Award:** Most feasible and quick-win solution
- ▶ Experiential prizes include:
  - ❖ Coffee chat with senior executive
  - ❖ Mentoring session with senior executive
  - ❖ Special visits not available to the public
  - ❖ Tickets for environment related conferences and courses
- ▶ All participants will receive a Certificate of Participation

# Fees

- ▶ The registration fee for each category is as follows:
  1. Student - \$300 per person
  2. Open - \$500 per person
- ▶ The registration fee includes, for each team member
  - EMAHK membership fee for 2025
    - For non-members, complimentary Affiliate Membership valued at \$200 is included <sup>1</sup>
    - For EMAHK members, the 2025 membership fee for the current membership tier is waived, valued up to \$500 <sup>2</sup>
  - A seat at the award dinner
- ▶ Registration fees should be paid directly to:

Bank: HSBC  
Account Name: The Environmental Management Association of Hong Kong Limited  
Account Number: 521-006635-838
- ▶ Ensure the main contact person's name is clearly written on the payment record

<sup>1</sup> Participants must complete the membership application process to activate the Affiliate Membership.

<sup>2</sup> EMAHK members must clearly indicate their membership numbers on the registration form to receive the waiver.

# Important Dates

2024

01 - 30 Nov

01 - 24 Dec

25 - 31 Dec

Registration period

Briefing sessions and site visits  
with case sponsors

Submit case  
choices

2025

04 Jan

22 Feb

Assign case to  
each team

Research and develop solutions,  
prepare presentation

Presentation to Judging Panel  
&  
Award dinner

# How to Join

1. Form a team of 3-5 members and decide on a team name
2. Download the registration form from the [Competition Website](#)
3. Pay the relevant registration fee
4. Upload the registration form & payment record to [Registration Portal](#)
5. Attend the briefings and site visits in December
  - ▶ Due to space and safety restrictions, there may be a limit to the number of people from each team for each visit
6. Select preferred cases and wait for case assignment confirmation
7. Research and develop solution
8. Present solution to Judging Panel

This competition would not be possible without the generous support of the following Sponsors

► Case Sponsors



► Prize Sponsors



► Financial Sponsor



Sponsors



## Academic Institutions



## Professional Organizations



# Supporting Organizations

# Rules and Regulations

## Participants:

- All participants must be 18 years of age and above.
- Members of the competition's Organizing Committee are not eligible to participant on any teams.
- Staff of Case Sponsors may participate but will be assigned to cases not related to their organization.
- Each participant may only join one team.
- EMAHK reserves the right to require proof of identity and/or eligibility for participation.

## Teams:

- Each team may have a minimum of 3 and a maximum of 5 members.
- Request for any changes to team composition, including addition, removal, and replacement of team members must be made in writing to EMAHK. Changes are only valid upon written confirmation by EMAHK and the payment of any outstanding fees. If the change caused the team composition to be ineligible for the Student Category, the registration fee difference to participant in the Open Category will apply for every member of the team.

## Confidentiality and non-disclosure

- All participants must keep confidential any information received from Case Sponsors and refrain from disclosing them to any third parties without obtaining written consent from the Case Sponsor and EMAHK.
- Participants must sign any non-disclosure declaration provided by Case Sponsors (as required).

## Refunds and cancellations:

- Fees paid are not refundable, including changes from Open to Student Category due to team composition change (if applicable)

## Collection of personal information

- Personal data collected will be used solely for the purpose of the competition and will not be shared with any third-parties with the consent of the data owner.
- Under the provisions of the Personal Data (Privacy) Ordinance, participants have the right to request access to, and amendment of, their personal data. Participants wishing to access or amend their data should submit a requests to EMAHK in writing.

# Terms and Conditions

- All participants agree to follow the rules, regulations, and terms and conditions of the competition.
- EMAHK reserves the right to disqualify any teams that do not comply with the rules and regulations.
- No copyrighted material (such as images and photos) are permitted to be incorporated into the solution without permission from the copyright owner. Any violation of copyright laws will result in disqualification of the team.
- All solutions presented must be original, have not been published elsewhere, or otherwise been submitted to other competitions.
- All participants agree to be photographed, video-recorded, and interviewed for the promotion of the competition and other EMAHK activities.
- EMAHK reserves the right to modify, add to or delete any terms of the competition.
- The decision of the Judging Panel will be final on the results of the competition.
- All participants agree to indemnify EMAHK from and against all claims, expenses and liabilities arising out of or relating to the competition.
- EMAHK hereby disclaims all liabilities that may arise in connection with the solutions presented and any materials produced in relation thereto.

# Contact Information

Download registration form: [Click here](#)

Registration portal: [Click here](#)

Questions? Contact us at [activities@emahk.org](mailto:activities@emahk.org)