



BCSD ACADEMY TRAINING BROCHURE



Mastering ESG Strategies for Business Excellence



STRATEGIC ESG LEADERSHIP

MANAGING RISKS AND DRIVING OPPORTUNITY FOR ENTERPRISE GROWTH



FEBRUARY, 26 (WED)



9:00 AM - 5:30 PM



**BCSD MALAYSIA
BERHAD, KL ECO CITY**

Enterprise Risk
Management (ERM)



Sustainability Integration
& Circular Economy

TAKE THE FIRST STEP TOWARDS PURPOSEFUL GROWTH

A CHANCE TO LEARN HOW TO TURN ESG INTO YOUR COMPETITIVE ADVANTAGE



**REAL-WORLD
ESG SOLUTIONS**



**INDUSTRY EXPERTISE &
TAILORED INSIGHTS**



**BUSINESS GROWTH
OPPORTUNITIES**

FULLY HRDC CLAIMABLE



COURSE FEE: RM 1,750/PAX

**COURSE FEE INCLUSIVE OF TRAINING MATERIALS,
FACILITATOR FEE, COURSE OF COMPLETION
CERTIFICATE, MEALS AND SERVICE TAX (8%)**

SCAN HERE



Kindly contact Celine at celine@bcSD.my for group discount rate.



www.bcSD.my



[BCSD Malaysia](#)

STRATEGIC ESG LEADERSHIP

MANAGING RISKS AND DRIVING OPPORTUNITY FOR ENTERPRISE GROWTH

KEY HIGHLIGHTS



Explore strategies to:

- **Integrate ESG into ERM Frameworks:** Enhance decision-making processes by embedding ESG into enterprise-wide risk management practices.
- **Navigate Complex ESG Challenges:** Address critical issues such as climate adaptation, governance risks, and human rights impacts.
- **Respond to Global Disruptions:** Prepare for risks related to extreme weather events, supply chain vulnerabilities, and shifting regulatory landscapes.
- **Leverage Circular Economy Principles:** Use circularity to reduce risks and identify opportunities through resource efficiency and innovation.
- **Enhance ESG Disclosures and Stakeholder Engagement:** Build trust and transparency with robust reporting and communication strategies.

WHO SHOULD JOIN

Business Leaders and Executives

Sustainability Professionals

Policy Makers and Advisors

Sector-Specific Leaders

Enterprise Risk Managers
and Compliance Officers

Investors and Financial
Professionals



SCAN HERE ↙



www.bcsd.my

STRATEGIC ESG LEADERSHIP

MANAGING RISKS AND DRIVING OPPORTUNITY FOR ENTERPRISE GROWTH

COURSE CONTENT

CHAPTER 1: THE EVOLUTION OF SUSTAINABLE DEVELOPMENT AND ESG: KEY TRENDS FOR TRANSITION

- Defining Sustainable Development: Core Principles and Key Pillars
- Introducing Planetary Boundaries and Environmental Limits
- ESG and SDGs: Aligning Global Efforts for Sustainability
- Understanding Key Trends And Navigating The Path To Sustainable Transition

CHAPTER 2: WHY SHOULD ESG MATTER TO YOUR BUSINESS?

- Sustainability as A Business Imperative
- Risk Landscape and ESG Risk Management
- Overview of the Sustainability System
- ESG Issues for financial service institutions

CHAPTER 3: CIRCULAR ECONOMY: RETHINKING BUSINESS MODELS FOR A SUSTAINABLE FUTURE

- Introducing the Circular Economy: Principles and Potential
- Measuring Circularity: Circular Transition Indicators (CTI)
- Circular Business Models: Innovations for Sustainable Growth

CHAPTER 4: MATERIALITY & ALIGNING WITH ESG REPORTING

- Understanding materiality
- Materiality as a tool for ESG risk assessment
- Challenges around ESG materiality and recommendations
- Current ESG Reporting Landscape

CHAPTER 5: BUSINESS LEADERS GUIDE TO CLIMATE ADAPTATION AND RESILIENCE

- Climate Adaptation as Business Imperative
- Identify Climate-induced Risk to Businesses
- Integration of Climate Adaptation and Resilience into Business Activities

STRATEGIC ESG LEADERSHIP

MANAGING RISKS AND DRIVING OPPORTUNITY FOR
ENTERPRISE GROWTH

COURSE CONTENT

CHAPTER 6: BUSINESS, HUMAN RIGHTS AND ENVIRONMENT

- Introduction to the Business Case for Human Rights and Environmental Considerations
- Business & Human Rights and Human Rights Due Diligence
- Prevention and Elimination of Forced Labour
- Human Rights and the Environment

CHAPTER 7: SUSTAINABILITY-FOCUSED GOVERNANCE WITHIN ORGANISATIONS

- What are The Emerging Trends for Senior Managers and Boards?
- The Rise of ESG-related Litigation
- Fiduciary Duties and Stakeholder Governance
- Recommendations to Modernize Governance

CHAPTER 8: BUILDING THE BUSINESS CASE FOR SUSTAINABILITY

- Preparing A Business Case For Sustainability
- Identifying The Themes And Opportunities: Climate, Nature And Social
- Identifying Financial Drivers Of Business Case
- Overview of WBCSD/COSO Guidance



Immersive & Interactive Experience with the -
RESILIENCE! THE CORPORATE SURVIVAL GAME



**ROBERTO
BENETELLO**

CELINE NG

**LEAD
TRAINERS**
[CLICK TO VIEW](#)



EMILY OI

**STEFANIE
BRAUKMANN**

STRATEGIC ESG LEADERSHIP

MANAGING RISKS AND DRIVING OPPORTUNITY FOR
ENTERPRISE GROWTH

COURSE ITINERARY

09:00 AM

CHAPTER 1: THE EVOLUTION OF SUSTAINABLE DEVELOPMENT AND ESG – KEY TRENDS FOR TRANSITION

10:00 AM

CHAPTER 2: WHY SHOULD ESG MATTER TO YOUR BUSINESS?

11:00 AM

CHAPTER 3: CIRCULAR ECONOMY: RETHINKING BUSINESS MODELS FOR A SUSTAINABLE FUTURE

11:30 AM

CHAPTER 4: MATERIALITY & ALIGNING WITH ESG REPORTING



1-hour Lunch Break: 12:30 PM - 1:30 PM

1:30 PM

CHAPTER 5: BUSINESS LEADERS GUIDE TO CLIMATE ADAPTATION AND RESILIENCE

2:15 PM

CHAPTER 6: BUSINESS, HUMAN RIGHTS AND ENVIRONMENT

3:00 PM

CHAPTER 7: SUSTAINABILITY-FOCUSED GOVERNANCE WITHIN ORGANISATIONS



1-hour Lunch Break: 3:45 PM - 4:00 PM

4:00 PM

CHAPTER 8: BUILDING THE BUSINESS CASE FOR SUSTAINABILITY

4:45 PM

INTERACTIVE SESSION: RESILIENCE! THE CORPORATE SURVIVAL GAME

FINISH

Session Ends at 5:30 PM

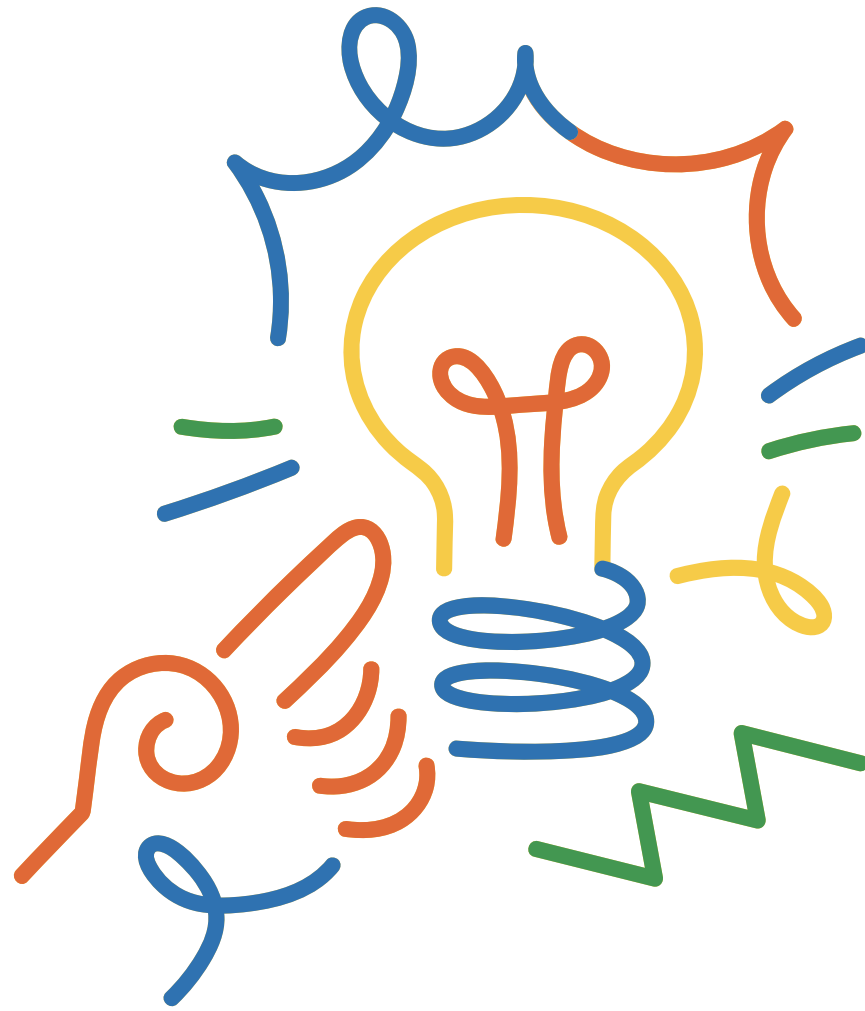
BCSD ACADEMY - YOUR LAUNCHPAD TO ESG LEADERSHIP

Pre-training
assessment

Training
Participation

Post-training
Evaluation





DID YOU KNOW?

Companies with strong ESG performance experience lower employee turnover!

Employees today are driven by more than just paychecks—they want purpose. Studies show that people are increasingly motivated to work for organizations that align with their personal values, especially when it comes to sustainability, social equity, and ethical governance.

[CLICK ON THIS LINK TO TEST YOUR KNOWLEDGE](#)

www.bcsd.my

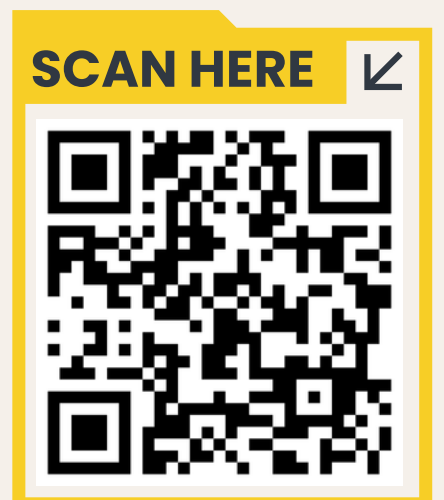
Send your inquiries to celine@bcsd.my

BCSD ACADEMY

🔍 Mastering ESG Strategies for Business Excellence



CONTACT
US



📞 03-2391 9270
+60 175853752 (Celine)

✉️ celine@bcsd.my

🌐 www.bcsd.my

📍 BO3-B-10-01, Menara 3A, 3, Jalan
Bangsar, KL Eco City, 59200 Kuala
Lumpur, Federal Territory of Kuala
Lumpur