



## *DOC Talks Speaker Series:*

**Leading Your Community Towards  
Racial Health Equity**

*Deryn Nixon*

MSN, APRN, FNP-BC, CVNP-BC



I have no  
disclosures.



# Design Thinking



What is?

What if?

What wows?

What works?



# What is?

Healthy Whatcom is the group guiding Whatcom County's community health improvement process. We believe in data-driven results, with a focus on racial equity, to improve health outcomes for children and families.

---

## WHAT WE DO: COMMUNITY HEALTH IMPROVEMENT

Healthy Whatcom works to advance justice through the stewardship of the [community health improvement](#) process in Whatcom County, WA. We have come together to build a community that is not only inclusive but where everyone belongs. We want to eliminate inequities caused by systemic racism, and we believe in the power of individuals to dismantle systems and build the community we want to live in.

We center our work on the principles of racial equity and health equity so that children of all races and ethnicities can thrive through fair and just opportunities to be as healthy as possible. We work to address socioeconomic stressors and inequities, challenge historic areas of oppression, and commit to the stewardship of our shared natural resources.



## Whatcom Coalition for Anti-Racist Education

We are a grassroots organization of parents and educators in Whatcom County working to mobilize our school communities to advocate for anti-racism, equity, social justice, and inclusion in the classroom.

[Our Work](#)



## Boards & Commissions

North Sound Behavioral Health Admin Services Org

Northwest Senior Services Board

Noxious Weed Control Board

Open Space Advisory Committee

Parks & Recreation Commission +

Planning Commission +

Point Roberts Community Advisory Committee

Public Defense Advisory Committee

[Home](#) > [Your Government](#) > [Boards & Commissions](#) > [N - Z](#) > Whatcom Racial Equity Commission

## Whatcom Racial Equity Commission

### Purpose

As a conduit for ongoing community collaboration, engagement, and education, within the broader context of diversity and inclusion, the purpose of the WREC is to gather, review, and evaluate data and to make recommendations on eliminating racial inequities, in all its forms, throughout Whatcom County. The vision of the WREC is that all races in Whatcom County live, thrive, and belong for who they are, as they are, without fear, every day.

### Commission Strategy & Goals

Whatcom County recognizes the community-wide costs and impacts associated with racial inequity and disparities, including negative health care outcomes, increased health care costs, reduced economic opportunity, increased government services costs, poor education outcomes, crime, and housing insecurity.

### Contact Us

#### Whatcom Racial Equity Commission

Chuckanut Health Foundation WREC Website:

<https://www.chuckanuthealthfoundation.org/launching-wrec>

Email: [WREC@ChuckanutHealthFoundation.org](mailto:WREC@ChuckanutHealthFoundation.org)

Kayla Schott-Bresler, Strategic Initiatives Manager

Select Language

Whatcom County Executive Office

[Email](#)







## Community Assessment

Who is already doing what and where?

Consult? Collaborate? Combine?



# What if?

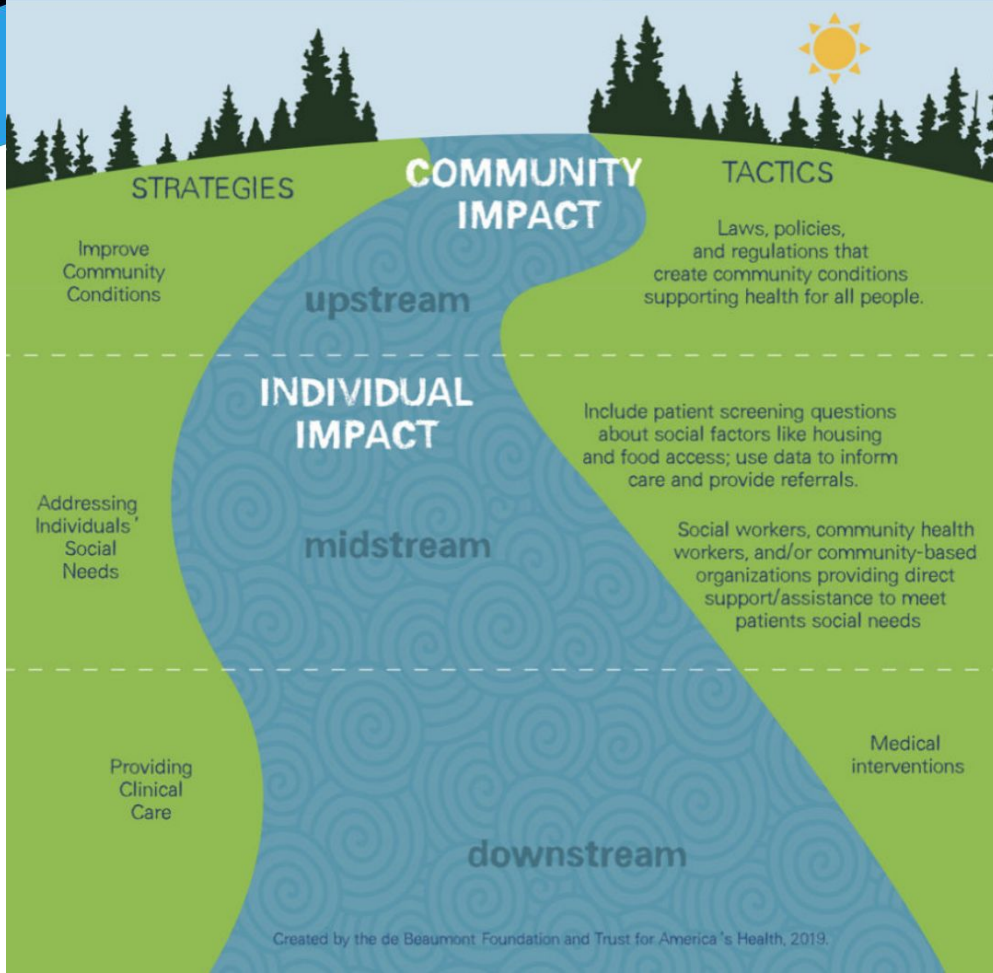


# REP FOR HEALTH EQUITY

Devyn Nixon, ARNP

R.E.P.	Like This
Representation	I speak your language, I share your lineage, minimal differences in powers and population
Education	Population-based & implemented health literacy. Powers educated in implicit bias, antiracism and local health assessments.
Policy	Targeted policies toward universal goals

# SOCIAL DETERMINANTS AND SOCIAL NEEDS: MOVING BEYOND MIDSTREAM



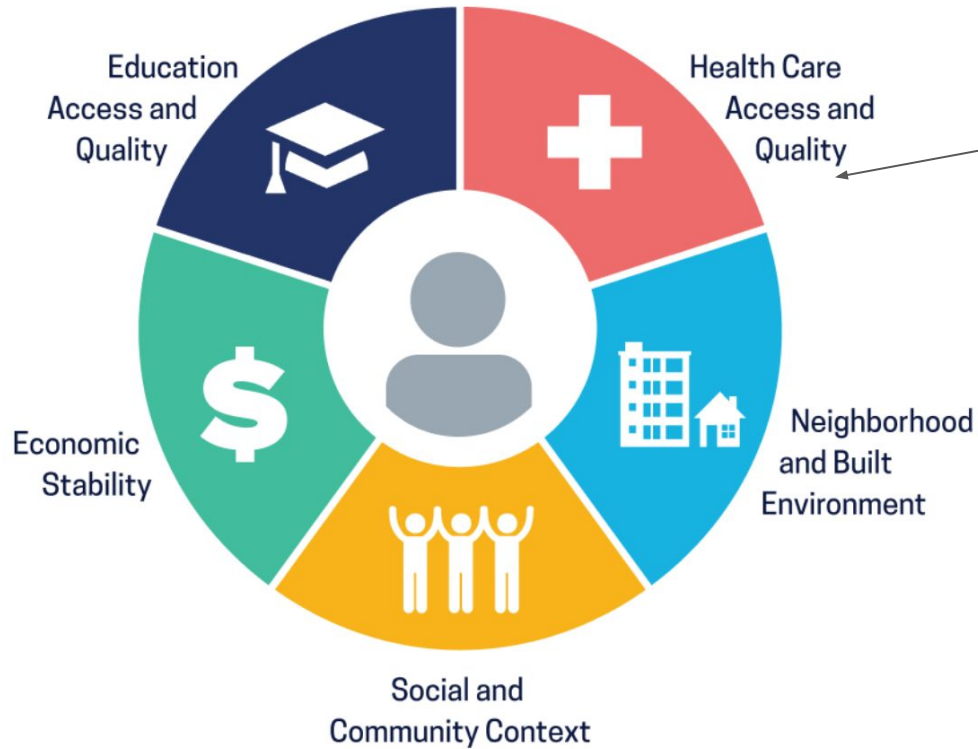
Recall the social drivers of health.

Are their gaps within the work being done?

Does your skillset lend to any of those gaps?



# Social Determinants of Health



Patient-provider racial/ethnic/linguistic concordance



# What wows?







North Sound Race & Health Equity Conference Welcome & Keynote with Dr. Somava Saha





# What works?

The North Sound Race and Health Equity Alliance presents:



# 4th Annual Race and Health Equity Conference

9 a.m.	WELCOME & LAND ACKNOWLEDGEMENT
9:30 a.m.	KEYNOTE ADDRESS
10:30 a.m.	BREAK
10:45 a.m.	COMMUNITY OF CARE PARTNERSHIP
12 p.m.	LUNCH
1 p.m.	MENTORING AND ALLYSHIP
2 p.m.	CLOSING

## April 13, 2024

9 a.m. - 2 p.m.



McIntyre Hall Performing Arts & Conference Center  
2501 E College Way, Mount Vernon, WA 98273

### Keynote speakers:



DR. PAULA HOUSTON



DR. YAW NYAME

Thank you to our sponsors!



North Sound Race and Health Equity Alliance  
North Sound Health Equity Scholarship  
North Sound Race and Health Equity Conference

✉ [NSRHE.Alliance@gmail.com](mailto:NSRHE.Alliance@gmail.com)



CHUCKANUT HEALTH FOUNDATION

North Sound ACH



Family Care Network  
*We Take Care.*



PeaceHealth



COMMUNITY HEALTH PLAN  
of Whatcombs?  
*The power of community.*



Mount Baker Foundation

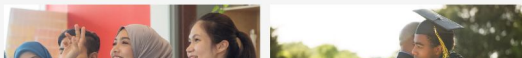


## North Sound Health Equity Scholarship

This scholarship is designed to support students of color on the path to receiving their advanced medical degrees, and to increase diverse representation in health care in the North Sound region. If you are a student of color pursuing an RN, BSN, ARNP, PA, MD, or DO degree with the goal of working in the North Sound, we want to hear from you!

*Applications are accepted September 15th through October 31st each year.*

Apply!



English >

## In summary:

Get clear on your vision and mission

Assess what work is already being done

- What is?

Identify gaps

- What if?

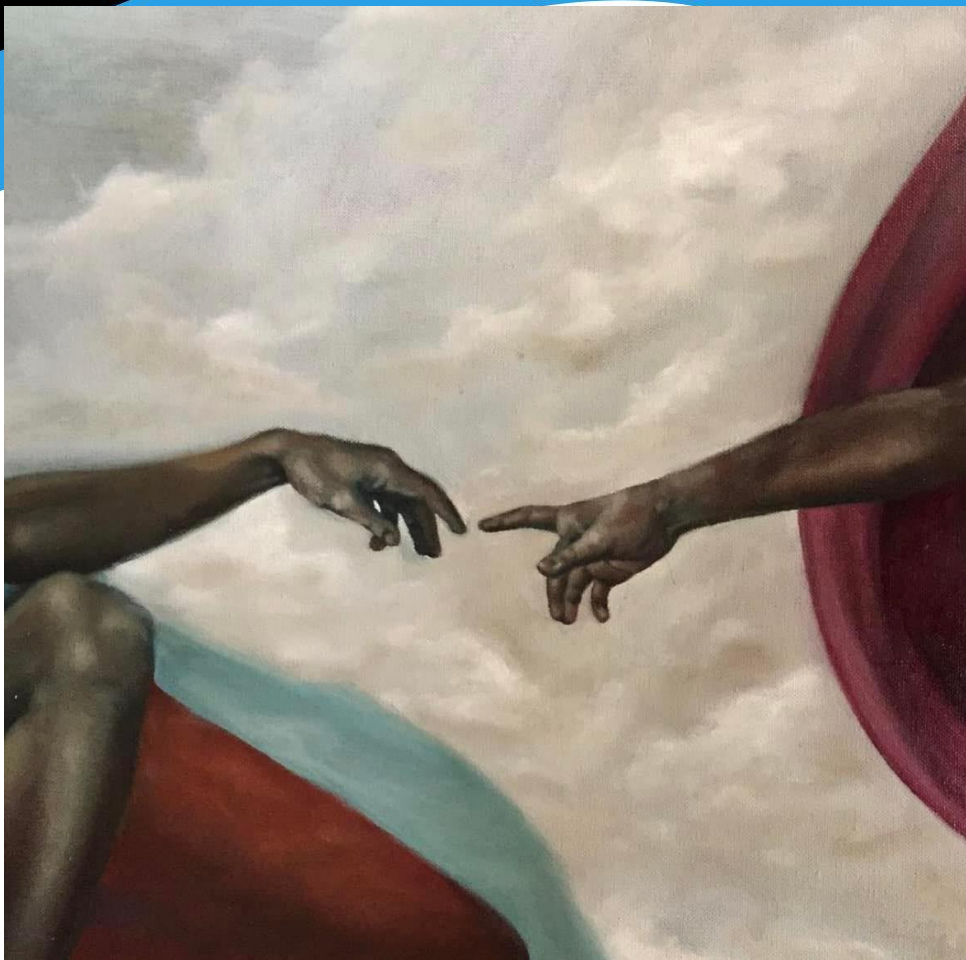
Consult, collab, combine efforts

- What wows?

Design an iterative framework

- What works?





## References

*Community health improvement plan.* (n.d.). Healthy Whatcom.

[https://healthywhatcom.org/?page\\_id=142](https://healthywhatcom.org/?page_id=142)

*Design thinking for innovation.* (n.d.). Coursera.

<https://www.coursera.org/learn/uva-darden-design-thinking-innovation>

*Envisioning health equity art challenge.* (n.d.). NIMHD.

<https://www.nimhd.nih.gov/programs/edu-training/art-challenge/index.html>

*North sound regional race and health equity conference.* (n.d.).

<https://northsoundach.org/raceandtheequityalliance/>

*Racial equity commission — chuckanut health foundation.* (n.d.). Chuckanut Health Foundation.

<https://www.chuckanuthealthfoundation.org/racial-equity-commission>

*We in the world.* (n.d.). WE in the World. <https://weintheworld.org/>

*Whatcom coalition for anti-racist education.* (n.d.). Whatcom Coalition for Anti-Racist

Education. <https://www.whatcomcare.org/>

*Whatcom racial equity commission.* (n.d.).

<https://www.whatcomcounty.us/4170/Whatcom-Racial-Equity-Commission>

