



LLOYD **WARWICK**

INTERNATIONAL | A McLaren's Company



MII – Power Generation

'War Stories'

20 June 2023



AGENDA

1. Introduction to LWI
2. Our Approach to Claims
3. War Stories
4. Questions



Lloyd Warwick International

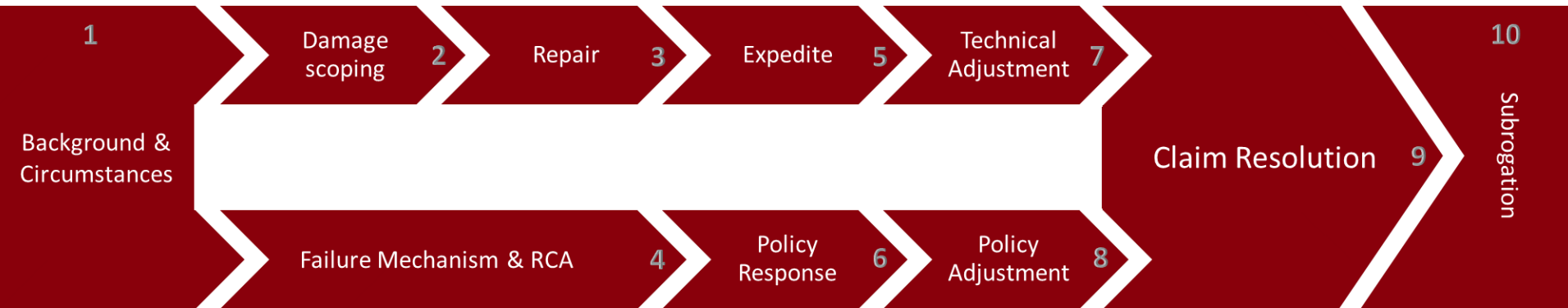
Global & Asian Operation

- A global loss adjuster with hub offices in UK, Europe, Americas, **Asia Pacific** & Africa
- Primary focus on Up/Downstream Energy, Traditional Power, Renewable Energy
- Operational and Construction phases
- BI and DSU claims, with specialist focus on loss mitigation and expediting
- [Part of the McLarens group of companies – access to McLarens network](#)
- **Singapore Office**
 - 7 experienced adjusters
 - Multi-disciplinary background in Engineering, Insurance, & Law
 - Hub for all claims in the region + global account management



Our Approach

Claims Procedure

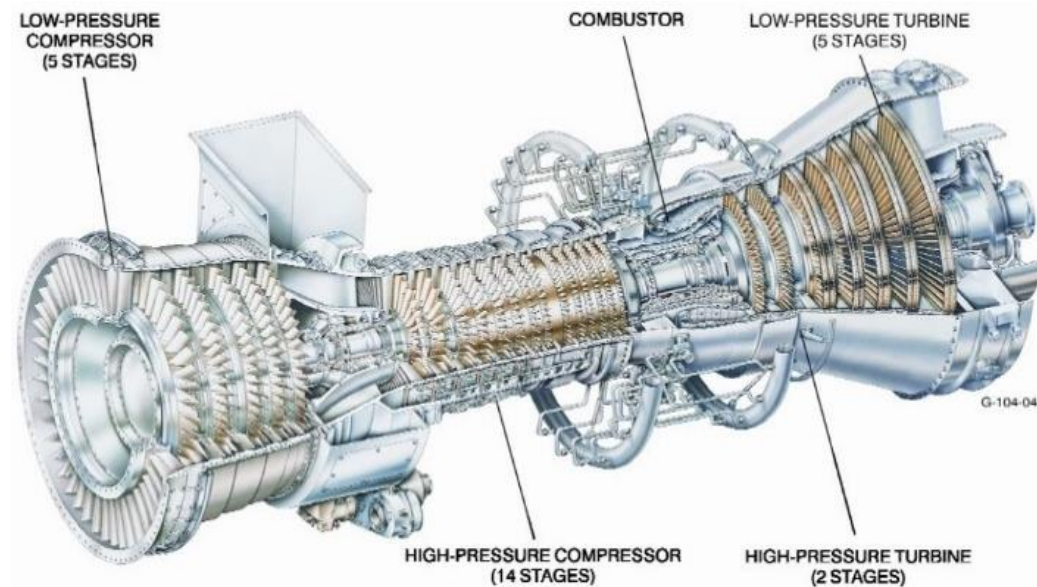




War Story 1

Background - LM-6000

- Combined-Cycle Power Plant
- GE LM6000 aero-derivative gas turbine
- 3x authorised workshops
 - GE in Houston
 - MTU in Berlin
 - IGI in Japan
- Lease pool by subscription
- Easily containerised for shipping





War Story 1

Power Plant – Machinery Breakdown

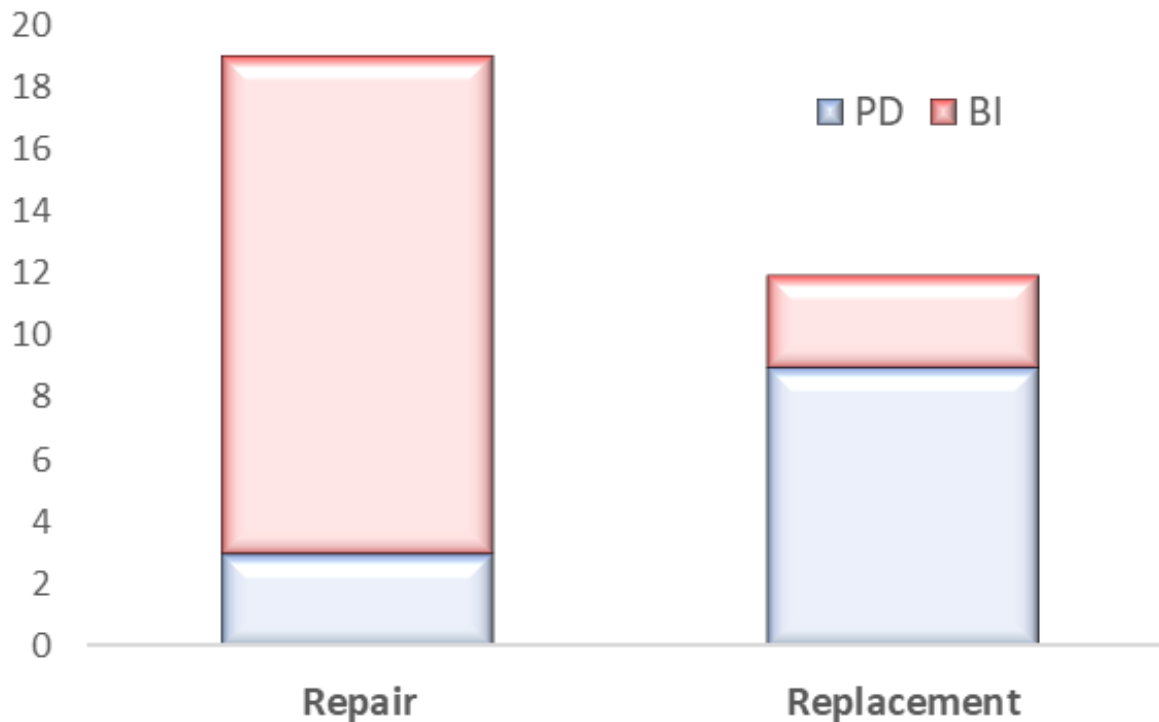


- Breakdown event during normal operations
- High-Pressure Compressor (HPC) section confirmed to have impact damage
- LM6000 cannot be repaired on site, or even opened up for detailed damage inspection
- No LTSA in place, no access to lease or spare engine
- All loss mitigation and expediting solutions under consideration
- Decision on remedial option needed to be made in advance of RCA completion



War Story 1

Tailored Solution



- Source Refurbished engine
- Confidence of the Market – local and international
- Total saving of ~**USD 7m**

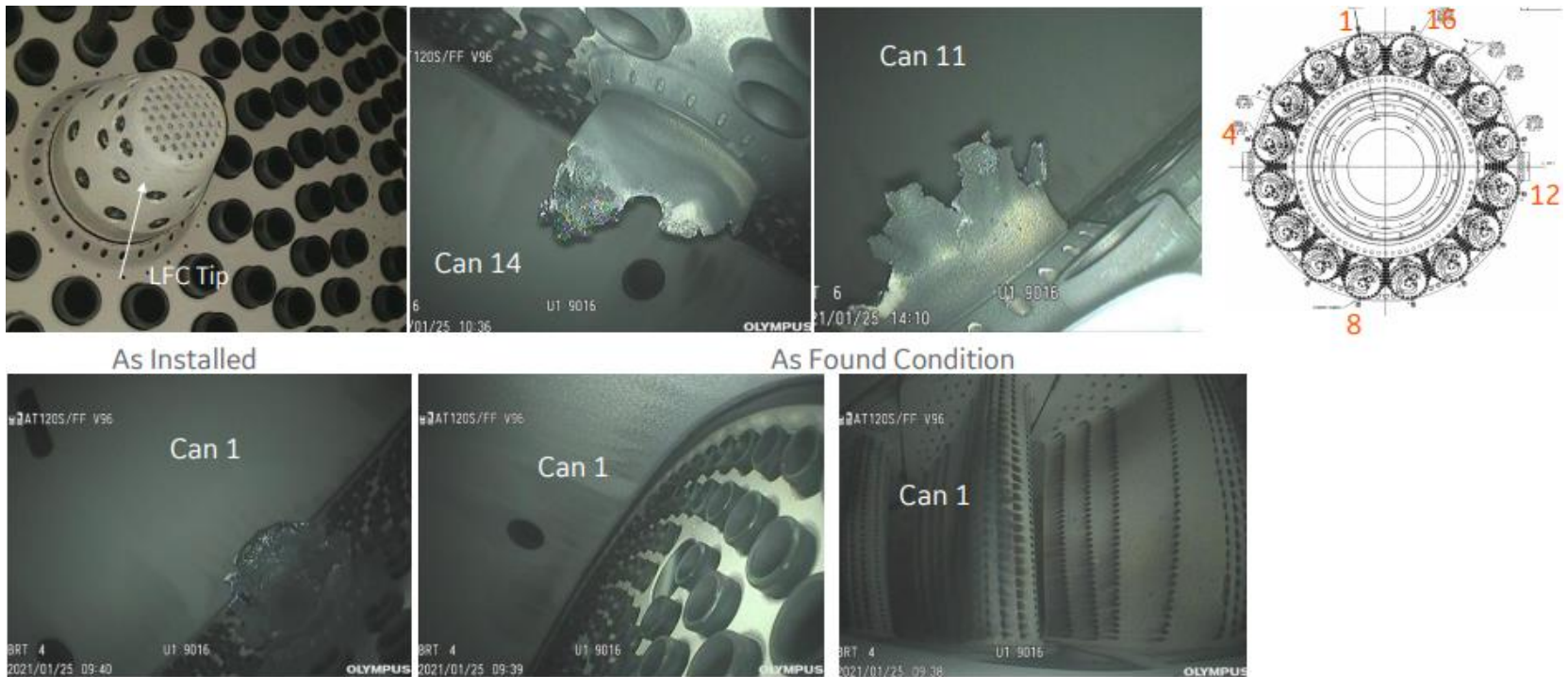
And

- Insured purchased damaged Engine... Further savings!!!



War Story 2

Power Plant Construction – ‘Unexpected Event’ to Combustors





War Story 3

'Spanner in the Works'

- STG – Last overhauled 10 years ago
- No operational problems noted during intermittent running
- Opened for hours-based overhaul
- Generator Stator Core found with impact and melting damage
- Stator Core requires replacement - luckily, Insured had an adjacent decommissioned Generator to use for spares

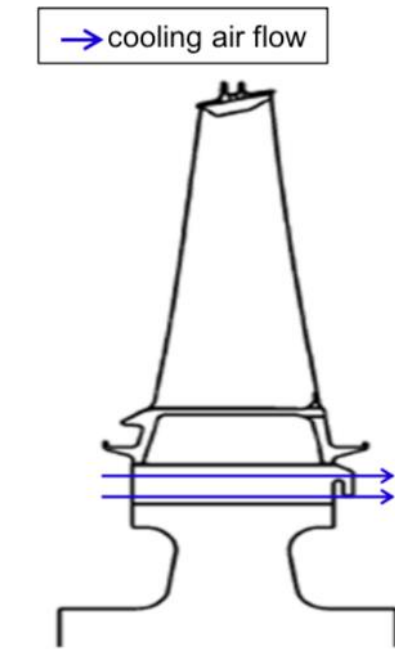


Key Question: When did the damage occur and which policy year should respond?

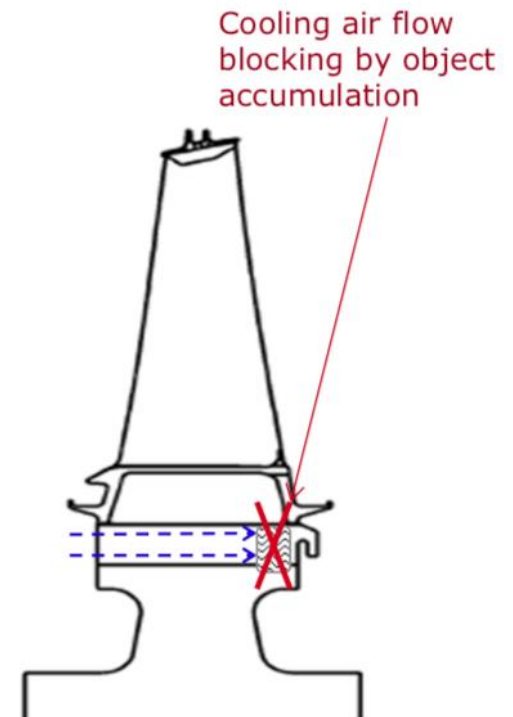


War Story 4

GT – Bleed Air



CASE-A : Normal air flow



CASE-B: Air flow blocking



War Story 4

GT – Bleed Air

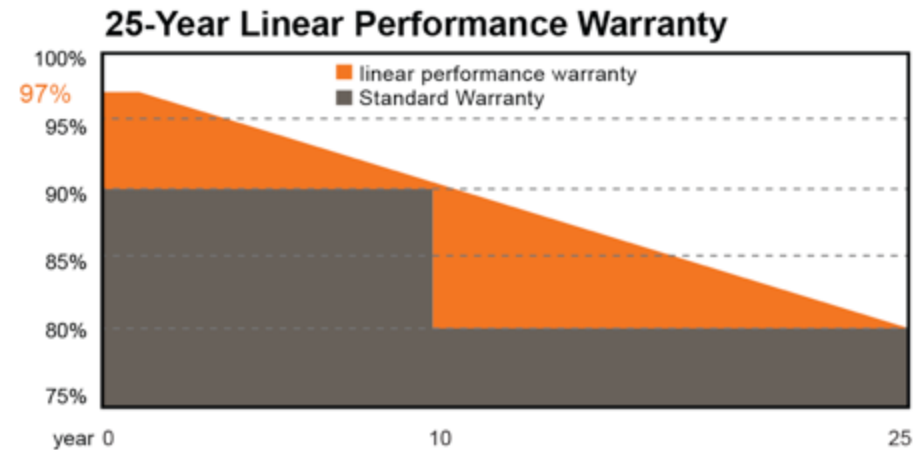




War Story 5

Solar (PV)

- **Power Plant** - 40MW – 138,000 panel mounted PV modules each with a capacity of ~300W.
- **Incident** - Flood (2-3m depth)
- **Damage** - Around 30,000 PV modules and 50 array boxes submerged by flood water
- **Claim** - USD 4m+ (PD) and USD 2m+ (BI)





War Story 5

A Stalemate...

- Insured: all flood-affected PV modules being replaced due to fear of damage
- vs**
- Insurers: proof of physical damage is the Insured's burden of proof.

Action Plan:

- Engage hydrologist
- Specialist Consultant for Field Testing
- Establish Warranty Curve
- Analysis of Warranty Curve





War Story 5

Resolution

Findings

- Adequate flood protection in place
- ~40% of all affected panels were tested
- From results identified pattern in PV module degradation
- Damage mechanism not flooding of PV modules, but...
- Inundation of array boxes leading to ground faults



Solutions

- Identified affected array boxes and allowed the replacement of 10x PV modules per string
- Claim settled at USD 2.8m (USD 1.6m PD and USD 1.2m BI)



Contact Information

Please direct any questions to:



Ben Davis – Senior Adjuster

E: ben.davis@lloydwarwick.com

M: (+65) 8028 2503



Lloyd Warwick International (Singapore) Pte Ltd

184a Telok Ayer,
Singapore 068631

T: +65 6589 8402 | E: singapore@lloydwarwick.com

www.lloydwarwick.com