

ABF CHENGDU

A FUSION OF PAST AND PRESENT

19 - 22 Sept 2024





MESSAGE FROM DAYCHAIR



Welcome to Chengdu. Time flies, yet we vividly recall the bustling main street of Naha in Okinawa and the profound teachings of Ikigai. Last October, the Greater China Bridge Chapter (GCB) was graciously hosted by ABF, resulting in an unforgettable experience. As the president of GCB and a member of ABF, this year, GCB will reciprocate by hosting ABF in Chengdu, offering ABFers a blend of tradition and modernity.

We have prepared for you ancient archaeological discoveries from Sanxingdui, delightful panda sanctuaries, and opportunities to explore how culture is manifested in the vibrant city of Chengdu. Additionally, we will savor the renowned Sichuan cuisine, with each GCB forum serving as a gracious host and fostering deeper connections through intimate dinner settings. Furthermore, we aim to facilitate business matchmaking sessions for those seeking insights into conducting business in China and forging ties with local enterprises.

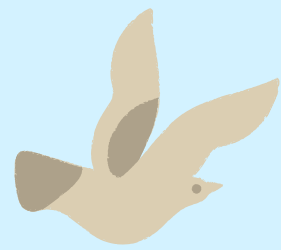
We eagerly anticipate your presence in Chengdu. Please do not hesitate to reach out if you have any inquiries; we are more than happy to assist.

Humbly yours,

MATTHEW

Day chair of GCB X ABF Chengdu





PROGRAM - MEMBER



DAY 0 - 18 SEPTEMBER 2024

08:00 [MYEO] Panda visit/The Sanxingdui museum
18:00 [MYEO] Dinner

DAY 1 - 19 SEPTEMBER 2024

08:00 Panda helper/The Sanxingdui Ruins dingging
09:00 Board Meeting
11:00 Moderator Meeting
12:30-13:30 Lunch Board + Moderator
13:30 Chengdu Museum + Wuhou Temple
14:00-17:00 GCB + ABF Dynamic Forum
18:00 GCB x ABF Joint Dinner
21:30 [MYEO] After Hours

DAY 2 - 20 SEPTEMBER 2024

09:00-12:00 ABF Forum Session 1
12:00-13:30 Lunch
13:30-17:00 ABF Forum Session 2
18:00-21:00 Dining Around (Hosted by GCB)

Day 3 - 21 September 2024

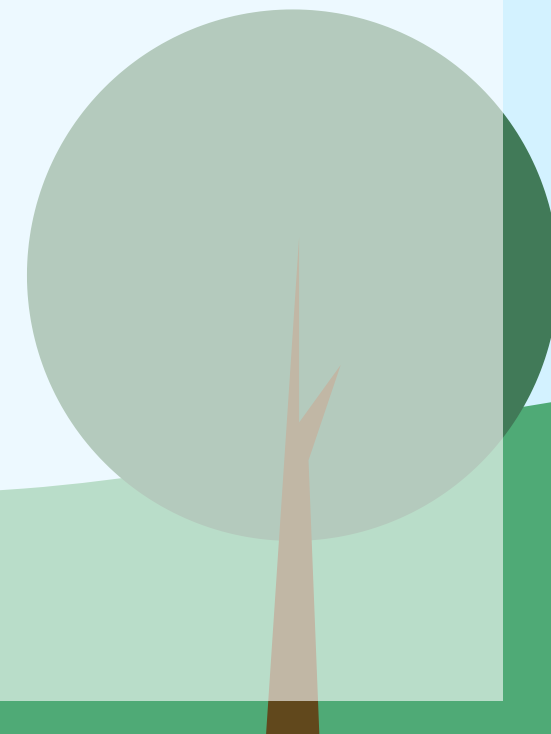
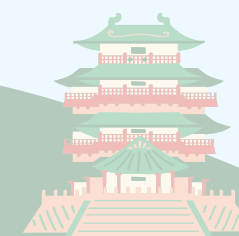
09:00-12:30 ABF Forum Session 3 @ZifiClub
12:30-14:00 Lunch @ZifiClub
14:00-17:00 Amazing Race
17:00-18:00 FREE and EASY
18:00-21:00 Closing Dinner @Shunxing Restaurant

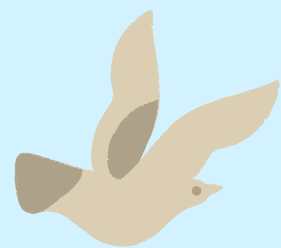
DAY 4 - 22 SEPTEMBER 2024

09:00-21:00 ABF Life Academy (Lunch & Dinner included)

Day 5 - 23 September 2024

09:00-15:00 ABF Life Academy (Lunch included)





PROGRAM - SPOUSE

DAY 0 - 18 SEPTEMBER 2024

08:00 [MYEO] Panda visit/The Sanxingdui museum
18:00 [MYEO] Dinner

DAY 1 - 19 SEPTEMBER 2024

08:00 Panda helper/The Sanxingdui Ruins dingging
12:30-13:30 Lunch
13:30 Chengdu Museum + Wuhou Temple
18:00 GCB x ABF Joint Dinner
21:30 [MYEO] After Hours

DAY 2 - 20 SEPTEMBER 2024

09:30-11:00 Daci Temple
11:00-14:30 Memory of the Eastern Suburbs-Sichuan Banquet
15:00-17:00 Wangjiang Park making tea by the fire
18:00-21:00 Dining Around (Hosted by GCB)

Day 3 - 21 September 2024

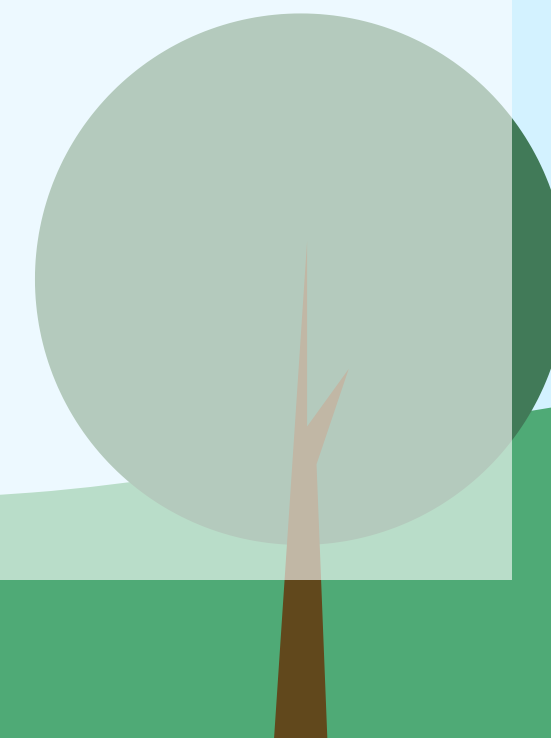
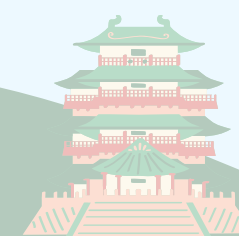
09:00-12:30 Massage @Chang
12:30-14:00 Lunch @ZifiClub
14:00-17:00 Amazing Race
17:00-18:00 FREE and EASY
18:00-21:00 Closing Dinner @Shunxing Restaurant

DAY 4 - 22 SEPTEMBER 2024

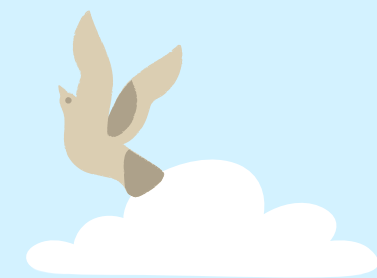
09:00-21:00 ABF Life Academy (Lunch & Dinner included)

Day 5 - 23 September 2024

09:00-15:00 ABF Life Academy (Lunch included)



CHENGDU 成都



GRAND HYATT, CHENGDU



No.8 South Chunxi Road, Jinjiang District, Chengdu,

610021 P.R.C, China
T: +86 28 6666 1234
F: +86 28 6666 5999

If you have problem with the room booking, please mail to chengdu.grand.hyatt.com and copied Veron at vtan@eonetnetwork.org

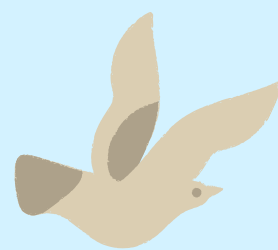




GRAND HYATT, CHENGDU

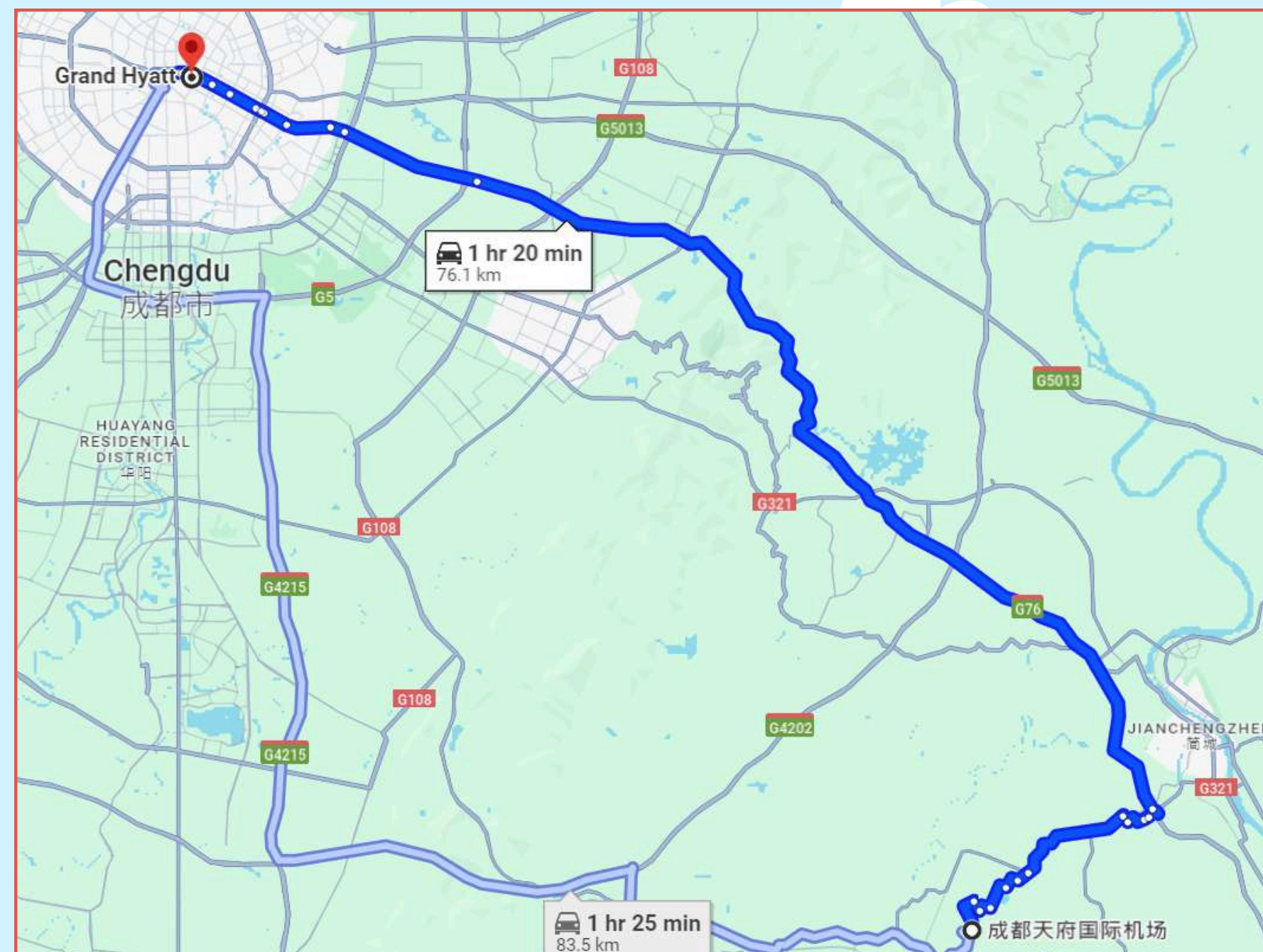
	<u>ROOM TYPE</u>	<u>SINGLE RATE</u>	<u>DOUBLE RATE</u>
	Grand King/Twin	CNY950 nett	CNY1050 nett
	Club King/Twin	CNY1,200 nett	CNY1,300 nett
	Grand Deluxe Suite King/Twin	CNY1,500 nett	CNY1,600 nett
	Grand Suite King	CNY1,800 nett	CNY1,900 nett
 	Executive Suite	CNY3,000 nett	CNY3,100 nett





AIRPORT > HOTEL

CHENGDU TIANFU INTERNATIONAL AIRPORT (TFU)



CHENGDU TIANFU INTERNATIONAL AIRPORT - GRAND HYATT, CHENGDU

Tianfu International Airport NorthTianfu International Airport (TFU), China

 (Chengdu metro)

Subway

1h 14min

CN¥15-21 >

Century City

Sichuan Gymnasium, Chengdu

Chunxi Road, Chengdu

(7 mins walk)

Grand Hyatt, Chengdu



Taxi

55min

CN¥170-210 >

Tianfu International Airport (TFU), China

Grand Hyatt, Chengdu



Bus, line 2 bus

3h 1min

CN¥28 >

Chengdu Airport T1 Chengdu Airport (CTU)

Chengdu Airport T2

Chunxi Road, Chengdu

(3 mins walk)

Grand Hyatt, Chengdu



CHENGDU TIANFU INTERNATIONAL AIRPORT - GRAND HYATT, CHENGDU

1. How far is Chengdu Tianfu Airport from downtown of Chengdu?

Chengdu Tianfu Airport is located 63km southeast of downtown of Chengdu.

2. How to get to Chengdu Tianfu Airport by metro, bus or taxi?

Chengdu Tianfu Airport can be reached by metro line 18, taxi, and airport bus. Metro line 18 is mostly recommended.

3. When do I need to arrive at the airport before the departure?

Allow yourself plenty of time, at least 2 hours to queue up for security checks and boarding.

4. How many terminals are there in Chengdu Tianfu Airport?

Two, Terminal 1 mainly serves international flights. And terminal 2 mainly serves China domestic flights. Most of the international direct flights will be landed at Chengdu Tianfu Airport.

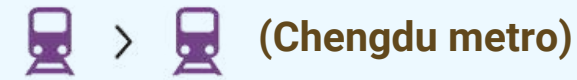


AIRPORT > HOTEL

CHENGDU SHUANGLIU INTERNATIONAL AIRPORT (CTU)



CHENGDU SHUANGLIU INTERNATIONAL AIRPORT - GRAND HYATT, CHENGDU



(Chengdu metro)

Line 10 subway, line 3 subway

28min

CN¥5-8 >

Chengdu Airport T1 Chengdu Airport (CTU)

↓
Taipingyuan, Chengdu

↓
Chunxi Road, Chengdu

↓
(7 mins walk)

↓
Grand Hyatt, Chengdu



Taxi

14min

CN¥55-70 >

Chengdu Airport T1 Chengdu Airport (CTU)

↓
Grand Hyatt, Chengdu



Line 2 bus

1h 11min

CN¥13 >

Chengdu Airport T2 Chengdu Airport (CTU)

↓
Chunxi Road, Chengdu

↓
(3 mins walk)

↓
Grand Hyatt, Chengdu



CHENGDU SHUANGLIU INTERNATIONAL AIRPORT - GRAND HYATT, CHENGDU

1. How far is Chengdu Shuangliu Airport from downtown of Chengdu?

Chengdu Shuangliu Airport is located 18km southwest of downtown of Chengdu.

2. How to get to Chengdu Shuangliu Airport by metro, bus or taxi?

Chengdu Shuangliu Airport can be reached by High-speed trains, Metro line 10, taxi, and airport bus. Metro line 10 is mostly recommended.

3. When do I need to arrive at the airport before the departure?

Allow yourself plenty of time, at least 2 hours to queue up for security checks and boarding.

4. How many terminals are there in Chengdu Shuangliu Airport?

Two, Terminal 1 mainly serves international flights. And terminal 2 mainly serves China domestic flights. Most of the international flight will have 1 stop at other state of China before landing at Chengdu Shuangliu Airport



E-SIM

Will there be sim card provided/available to buy?

Yes, but it will require members physically presence with their passport for the process. Members are advised to prepare e-sim card, or purchase data roaming with existing mobile network provider before travelling.

Here 3 recommended e-sim card providers:



NIHAO MOBILE
[HTTPS://WWW.NIHAOMOBILE.CN/EN/HOME](https://www.nihaomobile.cn/en/home)



GOHUB: NIHAO MOBILE
[HTTPS://WWW.NIHAOMOBILE.CN/EN/HOME](https://www.nihaomobile.cn/en/home)



AIRALO: GOHUB: NIHAO MOBILE
[HTTPS://WWW.NIHAOMOBILE.CN/EN/HOME](https://www.nihaomobile.cn/en/home)



VPN

Is it necessary to get a VPN? If so, is there any recommendation?
If member is using existing mobile network provider from own country, VPN is not necessary.
VPN is for member who uses China's mobile network provider.

Here is 3 recommended VPN:



SURFSHARK VPN: [NIHAO MOBILE](https://www.nihaomobile.cn/en/home)
[HTTPS://WWW.NIHAOMOBILE.CN/EN/HOME](https://www.nihaomobile.cn/en/home)



NordVPN®

NORD VPN: [GOHUB: NIHAO MOBILE](https://www.nihaomobile.cn/en/home)
[HTTPS://WWW.NIHAOMOBILE.CN/EN/HOME](https://www.nihaomobile.cn/en/home)



EXPRESS VPN:

[HTTPS://WWW.EXPRESSVPN.COM/](https://www.expressvpn.com/)



DRESSCODE

**19.9 DINNER
BLACK & WHITE**



**OTHER OCCASSIONS
SMART CASUAL**



WEATHER FORECAST

September in Chengdu



Max. temperature
+36°C



Min. temperature
+12°C



Monthly precipitation
119.31mm



Wind speed
17.31m/s

19 September



+25°
+20°

20 September



+25°
+20°

21 September



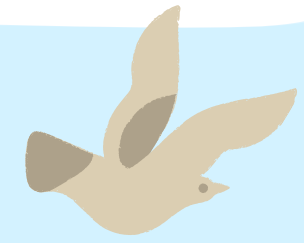
+25°
+19°

22 September



+24°
+19°





LET'S GO TO CHENGDU!

ARE YOU READY?

