

The future of HR is here. Are you ready?

**SHRM-CP**  
**SHRM-SCP**



## Define Yourself as an HR Leader

Establish yourself as a globally recognized HR professional by earning your **SHRM-CP**® or **SHRM-SCP**® certification for a competitive edge in today's global economy.

*"The SHRM Learning System is an outstanding certification prep program! My instructor brought the material alive with his 30+ years as a successful HR practitioner. The classroom discussions were always lively, and the opportunity to network with HR peers was wonderful. I highly recommend the SHRM Education Partner Program to anyone contemplating the certification exam. I am thrilled to be a SHRM-SCP, and I credit the course for my success."*

**-SHRM Learning System Course Participant**

### Course Date:

23 - 25 August 2017

### Time:

08.00 - 17.00

### Venue:

Mercantile Athletic Club,  
World Trade Centre 1  
Penthouse, 18th Floor  
Jl. Jend. Sudirman Kav. 28  
Jakarta 12920

### Investment per pax:

IDR 18,000,000 (+10%VAT)

### **EARLY BIRD SPECIAL !!**

**IDR 15,000,000 (+10%VAT)**

(Register before July 15th)

Establish yourself as a globally-recognized HR expert this year by earning your **SHRM-CP**® or **SHRM-SCP**® certification. Prove your value to colleagues and employers with the credentials built on the SHRM BoCK™, which defines the standards for knowledge, strategies and competencies required for effective HR professionals around the world.

Ensure you're prepared for the exam with our **SHRM Exam Learning System Course** this August. Designed for SHRM credential candidates, this intensive 3-day program combines expert instruction with the SHRM Learning System®, so you will learn faster, retain more knowledge and stay on track for success on the exam.

Expand your HR knowledge and practical, real-life competencies to make an immediate impact on your job and excel in your career.

Our program will help you acquire the knowledge and understand the behavioral and technical competencies to help you prepare and feel confident on exam day.

## COMMIT TO YOUR CAREER

SHRM's global HR credentials offer growth, advancement and recognition. These credentials are based on extensive global research involving employers, academics, and practicing HR professionals at all levels to ensure they maintain an industry-leading level of excellence and relevance in this ever-evolving profession.

By becoming a SHRM-CP or SHRM-SCP, you prove your knowledge, competency and value to colleagues and employers. Wherever your career takes you, your SHRM certification will define you as an HR expert and leader.



### SHRM-CP AND SHRM-SCP ELIGIBILITY CHART

| Credential | Less than a Bachelor's Degree* |                    | Bachelor's Degree  |                    | Graduate Degree      |                    |
|------------|--------------------------------|--------------------|--------------------|--------------------|----------------------|--------------------|
|            | HR-Related Program             | Non-HR Program     | HR-Related Degree  | Non-HR Degree      | HR-Related Degree    | Non-HR Degree      |
| SHRM-CP    | 3 years in HR role             | 4 years in HR role | 1 year in HR role  | 2 years in HR role | Currently in HR role | 1 year in HR role  |
| SHRM-SCP   | 6 years in HR role             | 7 years in HR role | 4 years in HR role | 5 years in HR role | 3 years in HR role   | 4 years in HR role |

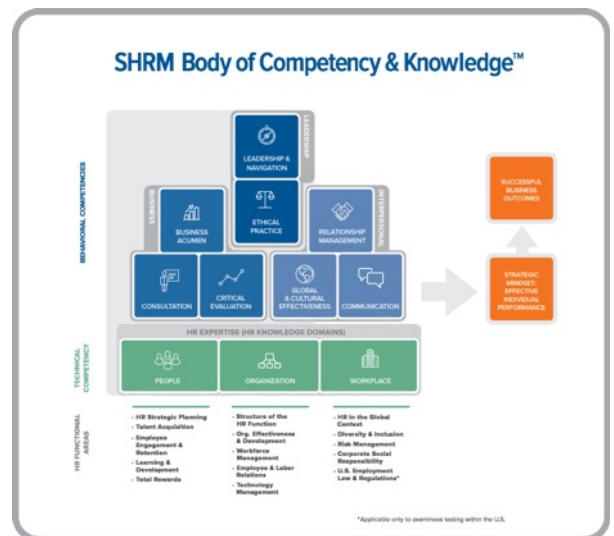
\*Less than a bachelor's degree includes: working toward a bachelor's degree; associate's degree; some college; qualifying HR certificate program; high school diploma; or GED.

## CHOOSE EXPERT LEADERSHIP AND GUIDANCE

Attending our course is the most effective way to prepare to pass the SHRM-CP and SHRM-SCP exams.



- ✓ **LEARN FROM A CERTIFIED INSTRUCTOR** who provides expertise, insights and one-on-one guidance.
- ✓ **NETWORK**, share experiences, and discuss topics with a diverse group of HR professionals.
- ✓ **STAY ON TRACK** to earn your certification with a structured learning experience and support.
- ✓ **TAKE ADVANTAGE** of funding options, such as corporate tuition reimbursement.



### RESERVE YOURS NOW! - Seats are LIMITED:

- 1) Medina : +6221 521 3630  
medina\_binol@bticonsultants.com
- 2) Sentosa : 08811155999 / 081510005818  
sentosa\_suwadji@bticonsultants.com

**BTI**Consultants  
A division of PT. Kelly Services Indonesia

Mayapada Tower 1, 6th Floor  
Jl. Jend. Sudirman Kav. 28  
Jakarta 12920  
www.bticonsultants.com