

HELPFUL TIPS FOR USING THIS DOCUMENT

Navigation.

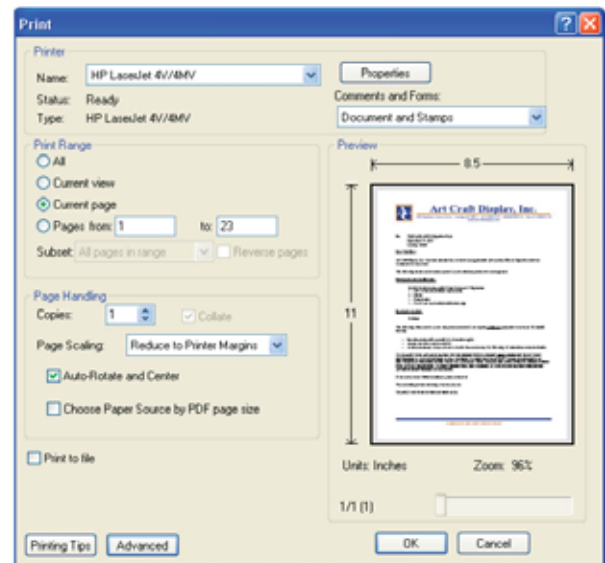
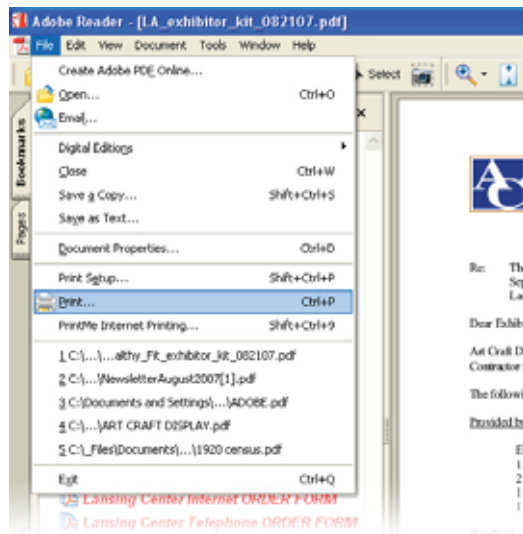
Use the bookmarks in the pane on the left side of the screen to “jump to” the page(s) you’re interested in. For your convenience, the pages are color-coded by document type.

Note: Each bookmark may represent more than one page.

Printing.

Rather than printing the entire document, you can jump or scroll to the page you want and print only that page. You may also print a specified range of pages.

These print options can be accessed by selecting the “Print...” option in the “File” menu at the top of the screen (see illustrations below).



We will be happy to answer any questions you have about this Exhibitor Kit. Please contact us at the phone number shown on the “Show Cover Letter” page of this document.



Art Craft Display, Inc.

3140 Three Mile Rd. NW · Grand Rapids, MI 49534 · (616)791 8024 · (800)292 2033 · Fax (616)791 8154
www.artcraftdisplay.com

Re: 2025 Great Lakes Floral & Event Expo
Feb 28 - Mar 2, 2025
DeVos Place
Grand Rapids, MI

Dear Exhibitor,

Art Craft Display, Inc. has been selected by your Show Management to serve as your official exposition service contractor.

The following items will be provided with your booth package:

- Exhibit booth draping with 8' high backs and 3' high sides
- Two (2) chairs
- One (1) wastebasket
- One (1) 7"x44" booth ID sign
- The facility is carpeted

Enclosed are optional equipment forms and shipping instructions, etc.

Payment must accompany your order and be received in our office by February 14th, 2025, to receive advance prices. We accept checks, American Express, MasterCard and Visa. *Orders placed with declined or invalid credit card number will be billed at floor order rates.* If there are any questions on billing, they must be settled at the service desk prior to the closing day of the show.

1. Freight must be shipped to the address on the shipping labels in the exhibitor kit.

ADVANCED WAREHOUSE SHIPMENTS

Advanced Warehouse shipments will be accepted from **Jan 28th, 2025**, through **Feb 27th, 2025**. Freight Handling fees will apply for all shipments received. Warehouse receiving hours are from 8:00 a.m. to 4:30 p.m., Monday – Friday. If required, provide your carrier with this phone number (616) 773-9417

Advanced Warehouse Shipping Address:

Exhibiting Company Name / Booth #
2025 Great Lakes Floral & Event Expo
C/o Art Craft Display, Inc.
DeVos Place
303 Monroe Ave NW
Grand Rapids, MI 49503



Art Craft Display, Inc.

3140 Three Mile Rd. NW · Grand Rapids, MI 49534 · (616)791 8024 · (800)292 2033 · Fax (616)791 8154
www.artcraftdisplay.com

ONSITE SHIPMENTS

Onsite shipments will be accepted **during move-in hours: February 28th, 2025, 8:00am-5:00pm**. Freight handling fees will apply for all shipments received. If any shipments are received before these dates, you will be charged the Advance Warehouse rates.

Onsite Shipping Address:

Exhibiting Company Name / Booth #
2025 Great Lakes Floral & Event Expo
C/o Art Craft Display, Inc.
DeVos Place
303 Monroe Ave NW.
Grand Rapids, MI 49503

Consolidate your shipments to save separate minimum charges. The minimum charge is 200 lbs per shipment.

*** Electricity / Internet / Audio Visual For Your Booth ***

Electric, telecommunication services & audio-visual services are provided by DeVos Place. Please complete the online order form at <https://www.devosplace.org/p/visit/exhibitor-forms>. If you have questions about your order, call DeVos Finance Department: (616) 742-6534.

Please contact us at (616) 791-8024 if there are any questions or if any further information is needed.

Yours for better show service,

ART CRAFT DISPLAY, INC.

Art Craft

DISPLAY, INC.

A DIVISION OF ART CRAFT SERVICE GROUP

CONTACT & PAYMENT INFORMATION

CHOOSE PAYMENT METHOD:

- Check enclosed # _____
 Credit/debit information below

RETURN TO: 3140 Three Mile NW • Grand Rapids, MI 49534 • (616)791-8024 • Fax (616)791-8154 • grandrapids@artcraftdisplay.com

SHOW NAME 2025 Great Lakes Floral & Event Expo	LOCATION DeVos Place	SHOW DATES Feb 28-Mar 2, 2025		
COMPANY	BOOTH #	BOOTH SIZE		
ADDRESS	address	city	state	zip
PHONE	FAX	EMAIL		
AUTHORIZED CONTACT SIGNATURE	AUTHORIZED CONTACT - PLEASE PRINT	DATE		

- Your signature above indicates your acceptance of all Terms, Conditions and Policies included in this Service Manual.
- Credit card charges will appear on statements as "Art Craft Display"
- Credit card processing fees of 3.5% will apply to all credit card transactions

REQUIRED CREDIT CARD AUTHORIZATION

PLEASE TYPE OR CLEARLY PRINT THE FOLLOWING REQUIRED INFORMATION.

Credit Card Information: Personal Credit Card Debit Card Company Credit Card

Card Type: Visa MasterCard American Express

Card Account Number: _____ Expiration Date: _____

Cardholder's Name (print): _____

Cardholder's Signature: _____

Cardholder's Billing Address: _____

City: _____ State: _____ Zip: _____ Phone: () _____

PAYMENT INFORMATION

All Orders:

- This form **must** be completed and returned with all your Service Orders.
- Phone orders and purchase orders will not be accepted.
- Payment in full of all charges (**in US funds only**) must be made prior to delivery of equipment or execution of services.
- No refunds, exchanges or credits will be made for any items included in your booth package.
- No refunds for any rental item once delivered to booth (see cancellation policy on Terms & Conditions page for additional information)
- All claims must be made prior to show closing. Absolutely no credits will be issued after that time.
- As the exhibiting firm, you are ultimately responsible for the payment of all charges. Please advise on-site representatives, staff and third party designates of this payment information.

Advance Orders:

- The Advance Order deadline is fourteen (14) days prior to first move-in day.
- Payment in full of all rental and service charges must accompany your order.
- Advance Order payments may be made by check or credit/debit card.

Floor Orders:

- All orders received after deadlines or on-site are subject to the floor order rate.
- Any orders placed after move-in has begun, must be placed at our on-site service desk. Faxed orders will not be processed during this time.
- Any orders requiring collection during or after the show are subject to floor rates, including declined credit/debit cards.
- Floor order payments may be made by cash, check or credit/debit card.

THIS COMPLETED FORM **MUST** BE RETURNED.

GR 2025

Standard Tables & Counter Tables

All standard tables and counters are commercial-grade wooden tables with folding metal legs. Available with or without white vinyl tabletop covering and pleated cloth skirting on three sides*.

Estimated seating capacities are as follows: 4' table - 4 people, 6' table - 6 people, 8' table - 8 people.



A. Standard Tables (30" high)

Available sizes: 2' x 4' 2' x 6' 2' x 8'
 Covering options: Covered & Skirted or Plain (no cover/skirt)

B. Counter Tables (42" high)

Available sizes: 2' x 4' 2' x 6' 2' x 8'
 Covering options: Covered & Skirted or Plain (no cover/skirt)

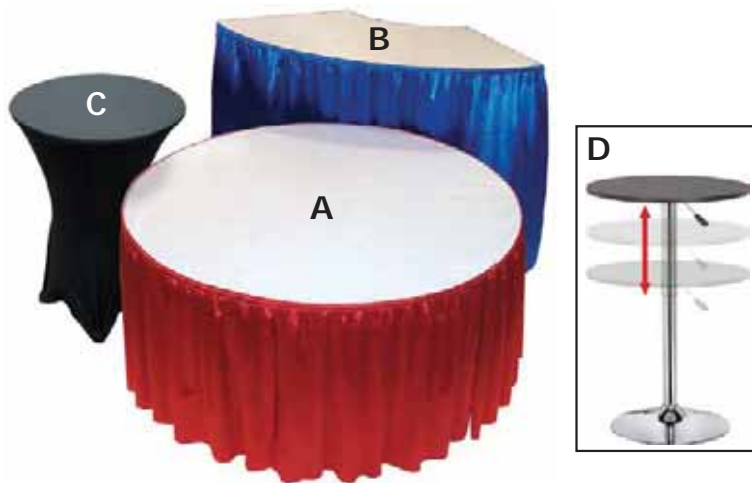
C. Table Top Riser - Covered Shelf (12" high)

Available sizes: 4' x 1' 6' x 1' 8' x 1'
 Covering options: Not applicable

* Skirting on 2'x4' tables covers all four sides of table. Fourth side table skirting available for all other tables & counters.

Specialty Tables & Counter Tables

All specialty tables and counters are commercial-grade wooden tables with metal legs. Available with or without white vinyl tabletop covering and pleated cloth skirting on three sides*.



A. 60" Diameter Banquet Tables

Available sizes: 30" High or 42" High
 Covering options: Covered & Skirted or Plain (no cover/skirt)

B. 6' Crescent Serpentine Tables

Available sizes: 30" High or 42" High
 Covering options: Covered & Skirted or Plain (no cover/skirt)

C. 30" Diameter Cocktail Tables

Available sizes: 30" High or 42" High
 Covering options: Black Form-Fitted Skirt or Plain (no cover/skirt)

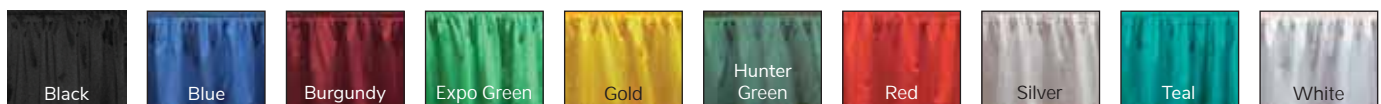
D. 23.5" Diameter Premium Adjustable Cocktail Tables

Available sizes: One Size (height adjusts from 27" to 35")
 Covering options: Table comes w/ black laminate top - Covering not available

* Skirting on 60" Diameter Banquet Table covers entire circumference of table. Fourth side table skirting available for 6' Crescent Serpentine Tables.

Table Skirting

Standard table skirting is available in either 30" or 42" heights & is made of a pleated, flame-retardant polyknit fabric. Color choices are as follows:



Embossed taffeta pattern vinyl (flame-retardant plastic) table skirting is available in virtually any color with 30 days advanced notice. Table linen rental also available. Please contact us for more information.

Folding Chair

Color: Black Seat w/ Chrome Legs
 Size: 18"W x 20"D
 Material: Molded Poly-Vinyl



Black Upholstered Chair

Color: Black Seat w/ Chrome Legs
 Size: 20" Square (Standard)
 Material: Fabric Covered Padding



Black Padded Counter Stool (w/back)

Color: Black Seat w/ Chrome Legs
 Size: 20" Square (Standard)
 Material: Fabric Covered Padding



Sign Hangers

Color: Silver
 Size: 9"L
 Material: Aluminum



Easel

Color: Chrome
 Size: 60" tall
 Material: Metal



Sign not included. Please contact our sign department to order sign.

Chrome Sign Frame

Color: Chrome
 Frame Size: 60" tall
 Sign Panel Size: 22" x 28"
 Material: Metal



Sign panel not included. Please contact our sign department to order sign.

Tackboard

Color: Grey
 Size: 4'x8' (vertical or horizontal)
 Material: Metal frame, wood panel with Velcro® receptive fabric covering



Bag Holders

Color: Chrome
 Size: 45"H
 Material: Steel



Literature Holders

Color: Black
 Size: 58"H (literature rack)
 Material: Steel/Aluminum



Garment Rack

Color: Chrome
 Size: 5'H x 6'W
 Material: Steel



Rope & Stanchion

Color: Chrome stanchion, burgundy or red velvet rope
 Size: 39"H stanchion, 8' or 7' L rope
 Material: Steel/fabric (velour/braided nylon)



Waste Baskets

Color: Black
 Material: Plastic
 Sizes: 7 Gallon or 30 Gallon (*not shown*)



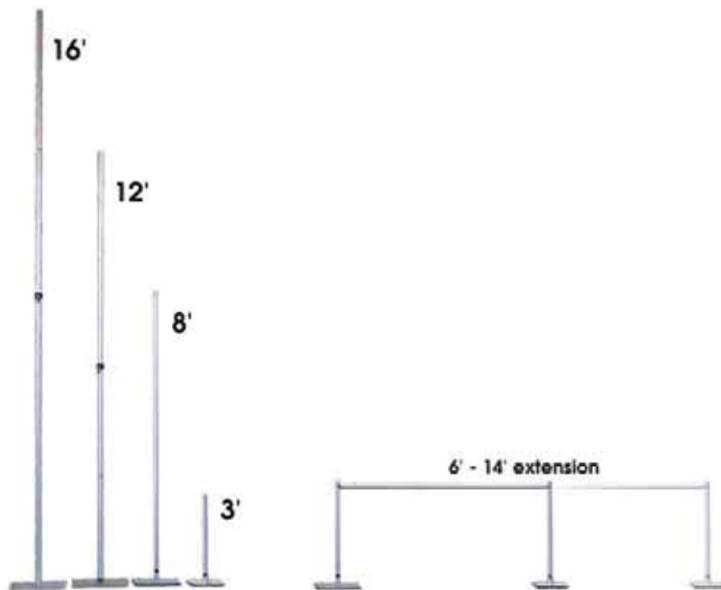
Swivel Spotlight

Color: White
 Bulb Type: LED
 Lumens: 1,000



Booth Draping & Hardware

Aluminum & steel hardware with flame-retardant fabric drapery panels. Available in 3', 8', 12' & 16' heights (see color chart below for specific availability).



Drape with Hardware (priced per lineal foot)

- 3' high drape w/hardware
- 8' high drape w/hardware
- 12' high drape w/hardware
- 16' high drape w/hardware
- 16' high velour drape w/hardware

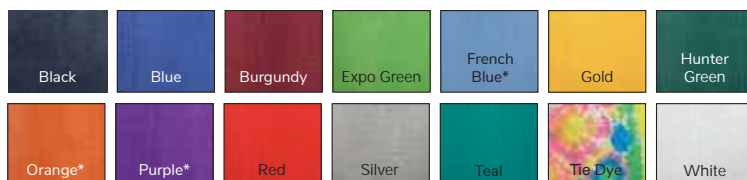
Hardware Only

- Aluminum extension (6'-10')
- Base plate for 3' upright
- 3' aluminum upright
- Base plate for 8' upright
- 8' aluminum upright
- Base plate for 12' upright/pin
- 12' aluminum upright
- Base plate for 16' upright/pin
- 16' aluminum upright

Drape Only

- 3' high drape panels
- 8' high drape panels
- 12' high drape panels
- 16' high drape panels
- 16' high velour drape panels

Banjo Cloth drape colors (3' high & 8' high panels):



* French Blue, Orange, Purple & Tie Dye drape available in limited quantities.
 (Orange, Purple & Tie Dye available in 8' high panels only).

12' high Banjo Cloth drape colors:



Black Velour also available in 8' high panels - limited quantity.

V MC AE CKP _____ REC'D BY _____
 EXP. DATE _____ CKF _____ DATE _____
 CC# _____ \$ _____

RETURN TO: 3140 Three Mile NW • Grand Rapids, MI 49534 • (616)791-8024 • Fax (616)791-8154 • grandrapids@artcraftdisplay.com

SHOW NAME 2025 Great Lakes Floral & Event Expo		LOCATION DeVos Place	SHOW DATES Feb 28-Mar 2, 2025
COMPANY	ADDRESS	BOOTH #	BOOTH SIZE _____ X _____
PHONE	FAX	EMAIL	state _____ zip _____
AUTHORIZED CONTACT SIGNATURE		AUTHORIZED CONTACT - PLEASE PRINT	
		DATE	

- **Advance Order Deadline: Fourteen (14) days prior to first move-in day.**
- **No refunds, exchanges or credits for any booth package items.**
- **All orders must be accompanied by "Contact & Payment Information" form**
- **All orders are subject to the enclosed Terms, Conditions and Policies.**

**Credit Card Information
Required with All Orders.**

NON-TAXABLE RENTAL ITEMS

STANDARD TABLES (30" HIGH)					BOOTH FURNITURE				
QTY.	ITEM	ADVANCE	FLOOR	AMOUNT	QTY.	ITEM	ADVANCE	FLOOR	AMOUNT
	2' x 4' Plain	48.36	61.00			Folding Chair	30.35	38.00	
	2' x 4' Covered & Skirted (skirted 4 sides)	87.14	109.00			Black Upholstered Chair	72.48	91.00	
	2' x 6' Plain	61.40	77.00			Black Padded Counter Stool - w/ back	87.21	110.00	
	2' x 6' Covered & Skirted	107.96	135.00			Wastebasket - 7 gallon	28.10	36.00	
	2' x 8' Plain	74.43	94.00						
	2' x 8' Covered & Skirted	128.80	161.00						
	4th side skirted optional	37.24	47.00						
COUNTER TABLES (42" HIGH)					BOOTH ACCESSORIES				
	2' x 4' Plain	80.00	100.00			Easel	38.74	49.00	
	2' x 4' Covered & Skirted (skirted 4 sides)	119.37	150.00			5' x 6' Garment Rack (w/ 25 hangers)	97.67	123.00	
	2' x 6' Plain	93.03	117.00			4' x 8' Tackboard <input type="checkbox"/> V <input type="checkbox"/> H	273.54	342.00	
	2' x 6' Covered & Skirted	140.20	176.00			Chrome Stanchion	41.36	52.00	
	2' x 8' Plain	106.01	133.00			Velvet Rope 8' long	41.36	52.00	
	2' x 8' Covered & Skirted	161.04	202.00			Red Braided Rope 7' long	41.36	52.00	
	4th side skirted optional	37.24	47.00			Chrome Sign Frame - 22" x 28"	97.76	123.00	
SPECIALTY TABLES (30" HIGH)						Chrome Bag Holder	75.15	94.00	
	30" Dia. Round Plain	71.61	90.00			Literature Rack	140.88	177.00	
	30" Dia. Round w/ Black Form-Fitted Skirt	110.82	139.00			Swivel Spotlight	76.80	96.00	
	60" Dia. Round Plain	101.46	127.00						
	60" Dia. Round Covered & Skirted	149.24	187.00						
	6' Crescent Serpentine Plain	101.46	127.00						
	6' Crescent Serpentine Cov'd & Skirted	149.24	187.00						
	23.5" Dia. Premium Adjustable Cocktail	212.87	267.00						
	4th side skirted optional	37.24	47.00						
SPECIALTY TABLES (42" HIGH)					BOOTH DRAPING & HARDWARE				
	30" Dia. Round Plain	97.67	123.00			3' high drape per ft. (incl. hardware)	5.80	8.00	
	30" Dia. Round w/ Black Form-Fitted Skirt	135.84	170.00			8' high drape per ft. (incl. hardware)	9.44	12.00	
	60" Dia. Round Plain	131.50	165.00			Aluminum Extension (6'-10')	16.30	21.00	
	60" Dia. Round Covered & Skirted	177.93	223.00			Base Plate for 3' Upright	10.86	14.00	
	6' Crescent Serpentine Plain	131.50	165.00			3' Aluminum Upright	10.86	14.00	
	6' Crescent Serpentine Cov'd & Skirted	177.93	223.00			Base Plate for 8' Upright	12.66	16.00	
	4th side skirted optional	37.24	47.00			8' Aluminum Upright	12.66	16.00	
						Base Plate for 12' Upright / Pin	32.54	41.00	
						12' Aluminum Upright	32.54	41.00	
						Base Plate for 16' Upright / Pin	39.74	50.00	
						16' Aluminum Upright	39.74	50.00	
TABLE ACCESSORIES									
	Raise Any Plain Table to 42" high	37.24	47.00						
	Raise Any Cov'd & Skirted Table to 42" high	50.24	63.00						
	Cover & Skirt for 30" table	56.87	72.00						
	Cover & Skirt for 42" table	56.87	72.00						
	Table Top Riser (Covered Shelf), 4' x 1' x 1'	48.36	61.00						
	Table Top Riser (Covered Shelf), 6' x 1' x 1'	61.40	77.00						
	Table Top Riser (Covered Shelf), 8' x 1' x 1'	74.43	94.00						

PLEASE CHECK SKIRT COLOR CHOICE
 Table includes white vinyl top cover and three sides skirted
 SHOW COLOR BLACK BLUE BURGUNDY EXPO GREEN
 GOLD HUNTER GREEN RED SILVER TEAL WHITE

TOTAL NON-TAXABLE ITEMS \$

GR-TS 2025

Most event industry experts agree that well-designed, professional graphics and signage are among the most important elements of an effective exhibit space. Event attendees will often decide whether to stop and learn more about your product or service based solely on their first impression of your booth's signs and graphics.

To purchase these items, please contact Art Craft Signs.

A



33.5" EconoRoll Retractable Banner Stand

Banner Stand with 1-sided SuperFlat Vinyl Graphic:
\$155.68 /pkg.
Includes carry bag

B



10 ft Custom Drapery Banner Pkg.

FULL HEIGHT (Banner size: 115" w x 92" h) **\$507.19 /pkg.**
HALF HEIGHT (Banner size: 115" w x 58" h) **\$333.11 /pkg.**

Packages include custom dye-sub printed polyester fabric banner with grommets, sign hooks, ball bungees and nylon carry bag.

C



30" wide Custom-Printed Fabric Table Runner

\$82.85 ea.
("Economy" runner - drapes over top and front surfaces)
Additional sizes available.

Table skirt not included

D



22" w x 28" h Poster Sign

1-sided sign on 4mm corrugated plastic:
\$30.48 ea.

1-sided sign on 3mm PVC:
\$44.86 ea.

Additional sizes & materials available.

SIGN FRAME NOT INCLUDED.

Please refer to "Rental Furnishings" form to rent sign frame shown.

E



18oz Vinyl Banner w/ Grommets

6ft wide x 2ft high, 1-sided **\$73.51 ea.**
8ft wide x 3ft high, 1-sided **\$133.17 ea.**
10ft wide x 4ft high, 1-sided **\$217.44 ea.**

Additional sizes & materials available.

F



Adjustable Banner Stand w/ Fabric Graphic:

Stand w/ **4ft wide x 4ft high** 1-sided fabric graphic **\$365.40 /pkg.**
Stand w/ **8ft wide x 8ft high** 1-sided fabric graphic **\$411.15 /pkg.**
Stand w/ **10ft wide x 8ft high** 1-sided fabric graphic **\$430.35 /pkg.**

G



8 ft wide Quick-Set Fabric Pop-Up Display

8' Straight Frame with 1-sided Fabric Graphic & end cap graphics:
\$825.72 ea. incl. carry bag

10 ft wide Quick-Set Fabric Pop-Up Display

10' Straight Frame with 1-sided Fabric Graphic & end cap graphics:
\$1,009.83 ea. incl. carry bag

H



Also available in **CURVED Configurations**

8 ft wide Straight Formulate Fabric Display

8' Straight frame with 1-sided Fabric Graphic:
\$670.34 ea. incl. carry bag

10 ft wide Straight Formulate Fabric Display

10' Straight frame with 1-sided Fabric Graphic:
\$803.22 ea. incl. carry bag

20 ft wide Straight Formulate Fabric Display

20' Straight frame with 1-sided Fabric Graphic:
\$1,812.41 ea. incl. carry bag

The items shown above represent a sampling of some of our most popular sign and display items. For a more complete list of products and services offered, please contact our Sign Department at **800-878-0710** or **signshop@artcraftdisplay.com**

UNLESS OTHERWISE STATED, MINIMUM TURN-AROUND TIME ON ALL ITEMS SHOWN ON THIS PAGE IS 14 BUSINESS DAYS BEFORE EVENT MOVE-IN DATE.

ALL PRICES SUBJECT TO CHANGE WITHOUT NOTICE. CURRENT PRICES WILL BE REFLECTED IN A FORMAL ESTIMATE PROVIDED PRIOR TO PRODUCTION. PRICES SHOWN DO NOT INCLUDE DESIGN LABOR, SALES TAX OR SHIPPING.


Company Name _____

Event Name
2025 Great Lakes Floral & Event Expo

Booth Number _____

GOOD...

Item #0060



Select **10' X 10' STANDARD EXHIBIT** *(select options below)*

Includes:

- (2) Modular Lights
- (2) 2M w x 1M h Side Walls
- (1) 3M wide Center Header/Fascia Panel w/ Company Name
- (1) 10' x 10' Standard Carpet
- Grey Infill Panels

RENTAL PRICE: \$2,367.50

STANDARD CARPET COLOR: Red Blue Black Grey Dark Green

REMOVE SIDE WALL(s)?
 Left side Right side

HEADER SIGN COPY: _____

HEADER LETTERING COLOR (background color will be grey): Black White Red Blue

BETTER...

Item #0061CC



Select **10' X 10' PREMIUM EXHIBIT** *(select options below)*

Includes:

- (3) Rigid Back Wall Graphic Panels
- (1) 10'x10' Premium Carpet w/ Padding & Plastic Covering
- (2) .5M w x 2.5M h Side Walls - Grey Infill Panels
- (2) 2M w x 1M h Side Walls - Grey Infill Panels
- (3) Modular Lights

RENTAL PRICE: \$3,807.40 Price includes graphics sales tax

PREMIUM CARPET COLOR:

<input type="checkbox"/> Beige	<input type="checkbox"/> Black	<input type="checkbox"/> Burgundy	<input type="checkbox"/> Charcoal	<input type="checkbox"/> Cobalt	<input type="checkbox"/> Grape Soda	<input type="checkbox"/> Emerald
<input type="checkbox"/> Graphite	<input type="checkbox"/> Ice	<input type="checkbox"/> Ivory	<input type="checkbox"/> Key Lime	<input type="checkbox"/> Lemon Drop	<input type="checkbox"/> Navy	<input type="checkbox"/> Midway Blue
<input type="checkbox"/> Nu Blue	<input type="checkbox"/> Platinum	<input type="checkbox"/> Red	<input type="checkbox"/> Royal Blue	<input type="checkbox"/> Silver Cloud	<input type="checkbox"/> White	<input type="checkbox"/> Tuitti Fruitti

REMOVE SIDE WALL(s)?
 Left side Right side

BEST

Item #SEG01



Select **10' X 10' PREMIUM S.E.G. EXHIBIT** *(select options below)*

Includes:

- (1) Seamless Fabric Back Wall Graphic
- (1) 10'x10' Premium Carpet w/ Padding & Plastic Covering
- (2) .5M w x 2.5M h Side Walls - Grey Infill Panels
- (2) 2M w x 1M h Side Walls - Grey Infill Panels
- (3) Modular Lights

RENTAL PRICE: \$4,024.44 Price includes graphics sales tax

PREMIUM CARPET COLOR:

<input type="checkbox"/> Beige	<input type="checkbox"/> Black	<input type="checkbox"/> Burgundy	<input type="checkbox"/> Charcoal	<input type="checkbox"/> Cobalt	<input type="checkbox"/> Grape Soda	<input type="checkbox"/> Emerald
<input type="checkbox"/> Graphite	<input type="checkbox"/> Ice	<input type="checkbox"/> Ivory	<input type="checkbox"/> Key Lime	<input type="checkbox"/> Lemon Drop	<input type="checkbox"/> Navy	<input type="checkbox"/> Midway Blue
<input type="checkbox"/> Nu Blue	<input type="checkbox"/> Platinum	<input type="checkbox"/> Red	<input type="checkbox"/> Royal Blue	<input type="checkbox"/> Silver Cloud	<input type="checkbox"/> White	<input type="checkbox"/> Tuitti Fruitti

REMOVE SIDE WALL(s)?
 Left side Right side

Item #SEG01B



Select **10' X 10' PREMIUM BACK-LIT S.E.G. EXHIBIT** *(select options below)*

Includes:

- (1) Seamless Fabric Back Wall Graphic
- (1) Opaque Liner for Back Side of Exhibit - Grey Fabric Only
- (1) 10'x10' Premium Carpet w/ Padding & Plastic Covering
- (2) .5M w x 2.5M h Side Walls - Grey Infill Panels
- (2) 2M w x 1M h Side Walls - Grey Infill Panels
- Internal Lighting

RENTAL PRICE: \$5,046.74 Price includes graphics sales tax

PREMIUM CARPET COLOR:

<input type="checkbox"/> Beige	<input type="checkbox"/> Black	<input type="checkbox"/> Burgundy	<input type="checkbox"/> Charcoal	<input type="checkbox"/> Cobalt	<input type="checkbox"/> Grape Soda	<input type="checkbox"/> Emerald
<input type="checkbox"/> Graphite	<input type="checkbox"/> Ice	<input type="checkbox"/> Ivory	<input type="checkbox"/> Key Lime	<input type="checkbox"/> Lemon Drop	<input type="checkbox"/> Navy	<input type="checkbox"/> Midway Blue
<input type="checkbox"/> Nu Blue	<input type="checkbox"/> Platinum	<input type="checkbox"/> Red	<input type="checkbox"/> Royal Blue	<input type="checkbox"/> Silver Cloud	<input type="checkbox"/> White	<input type="checkbox"/> Tuitti Fruitti

REMOVE SIDE WALL(s)?
 Left side Right side

Note: Rigid graphic panels are printed on 3mm thick cardboard. Non-graphic infill panels come in standard grey PVC. All printed S.E.G. fabric panels are purchases. The printed fabric panels may be kept following the show. Fabric panels left behind after the show will be disposed of. For additional options and costs, contact an Art Craft representative at modular@artcraftdisplay.com. All items are based upon availability. All other rental furnishings and electrical service must be ordered separately. Packages cannot be changed or substituted. No refunds, exchanges or credits for any booth package items.

Company Name

Event Name

2025 Great Lakes Floral & Event Expo

Booth Number

GOOD...



Select

10' X 15' STANDARD EXHIBIT *(select options below)*

- Includes:**
- (3) Modular Lights
 - (2) 2M w x 1M h Side Walls
 - (1) 3M wide Center Header/Fascia Panel w/ Company Name
 - (1) 10' x 15' Standard Carpet
 - Grey Infill Panels

RENTAL PRICE: \$2,944.74

STANDARD CARPET COLOR: Red Blue Black Grey Dark Green

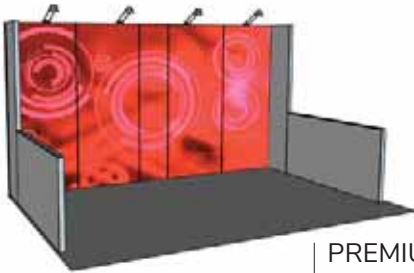
HEADER SIGN COPY: _____

HEADER LETTERING COLOR (background color will be grey): Black White Red Blue

REMOVE SIDE WALL(s)?
 Left side Right side

Item #0061

BETTER...



Select

10' X 15' PREMIUM EXHIBIT *(select options below)*

- Includes:**
- (5) Rigid Back Wall Graphic Panels
 - (1) 10'x15' Premium Carpet w/ Padding & Plastic Covering
 - (2) .5M w x 2.5M h Side Walls - Grey Infill Panels
 - (2) 2M w x 1M h Side Walls - Grey Infill Panels
 - (4) Modular Lights

RENTAL PRICE: \$5,040.06 Price includes graphics sales tax

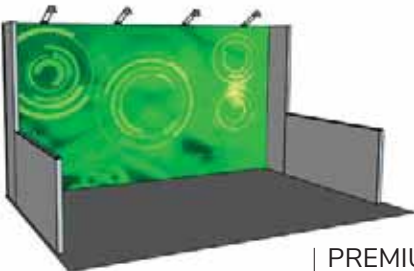
PREMIUM CARPET COLOR:

- Beige Black Burgundy Charcoal Cobalt Grape Soda Emerald
 Graphite Ice Ivory Key Lime Lemon Drop Navy Midway Blue
 Nu Blue Platinum Red Royal Blue Silver Cloud White Tuitti Fruitti

REMOVE SIDE WALL(s)?
 Left side Right side

Item #0061DD

BEST



Select

10' X 15' PREMIUM S.E.G. EXHIBIT *(select options below)*

- Includes:**
- (1) Seamless Fabric Back Wall Graphic
 - (1) 10'x15' Premium Carpet w/ Padding & Plastic Covering
 - (2) .5M w x 2.5M h Side Walls - Grey Infill Panels
 - (2) 2M w x 1M h Side Walls - Grey Infill Panels
 - (4) Modular Lights

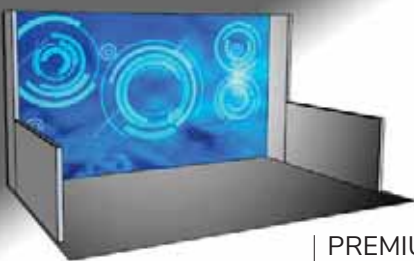
RENTAL PRICE: \$5,315.50 Price includes graphics sales tax

PREMIUM CARPET COLOR:

- Beige Black Burgundy Charcoal Cobalt Grape Soda Emerald
 Graphite Ice Ivory Key Lime Lemon Drop Navy Midway Blue
 Nu Blue Platinum Red Royal Blue Silver Cloud White Tuitti Fruitti

REMOVE SIDE WALL(s)?
 Left side Right side

Item #SEG02



Select

10' X 15' PREMIUM BACK-LIT S.E.G. EXHIBIT *(select options below)*

- Includes:**
- (1) Seamless Fabric Back Wall Graphic
 - (1) Opaque Liner for Back Side of Exhibit - Grey Fabric Only
 - (1) 10'x15' Premium Carpet w/ Padding & Plastic Covering
 - (2) .5M w x 2.5M h Side Walls - Grey Infill Panels
 - (2) 2M w x 1M h Side Walls - Grey Infill Panels
 - Internal Lighting

RENTAL PRICE: \$6,886.30 Price includes graphics sales tax

PREMIUM CARPET COLOR:

- Beige Black Burgundy Charcoal Cobalt Grape Soda Emerald
 Graphite Ice Ivory Key Lime Lemon Drop Navy Midway Blue
 Nu Blue Platinum Red Royal Blue Silver Cloud White Tuitti Fruitti

REMOVE SIDE WALL(s)?
 Left side Right side

Item #SEG02B

Note: Rigid graphic panels are printed on 3mm thick cardboard. Non-graphic infill panels come in standard grey PVC. All printed S.E.G. fabric panels are purchases. The printed fabric panels may be kept following the show. Fabric panels left behind after the show will be disposed of. For additional options and costs, contact an Art Craft representative at modular@artcraftdisplay.com. All items are based upon availability. All other rental furnishings and electrical service must be ordered separately. Packages cannot be changed or substituted. No refunds, exchanges or credits for any booth package items.

Company Name

Event Name

2025 Great Lakes Floral & Event Expo

Booth Number

GOOD...

BETTER...

BEST

Item #0061AA



Select

10' X 20' STANDARD EXHIBIT *(select options below)*

- Includes:**
- (5) Modular Lights
 - (2) 2M w x 1M h Side Walls
 - (1) 3M wide Center Header/Fascia Panel w/ Company Name
 - (1) 10' x 20' Standard Carpet
 - Grey Infill Panels

RENTAL PRICE: \$3,594.60

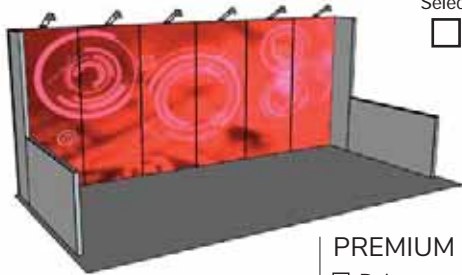
STANDARD CARPET COLOR: Red Blue Black Grey Dark Green

HEADER SIGN COPY: _____

HEADER LETTERING COLOR (background color will be grey): Black White Red Blue

REMOVE SIDE WALL(s)?
 Left side Right side

Item #0061EE



Select

10' X 20' PREMIUM EXHIBIT *(select options below)*

- Includes:**
- (6) Rigid Back Wall Graphic Panels
 - (1) 10'x20' Premium Carpet w/ Padding & Plastic Covering
 - (2) .5M w x 2.5M h Side Walls - Grey Infill Panels
 - (2) 2M w x 1M h Side Walls - Grey Infill Panels
 - (6) Modular Lights

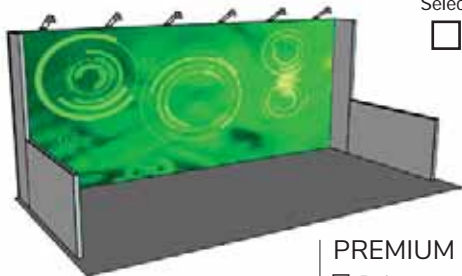
RENTAL PRICE: \$6,256.62 Price includes graphics sales tax

PREMIUM CARPET COLOR:

- Beige Black Burgundy Charcoal Cobalt Grape Soda Emerald
 Graphite Ice Ivory Key Lime Lemon Drop Navy Midway Blue
 Nu Blue Platinum Red Royal Blue Silver Cloud White Tuitti Fruitti

REMOVE SIDE WALL(s)?
 Left side Right side

Item #SEG03



Select

10' X 20' PREMIUM S.E.G. EXHIBIT *(select options below)*

- Includes:**
- (1) Seamless Fabric Back Wall Graphic
 - (1) 10'x20' Premium Carpet w/ Padding & Plastic Covering
 - (2) .5M w x 2.5M h Side Walls - Grey Infill Panels
 - (2) 2M w x 1M h Side Walls - Grey Infill Panels
 - (6) Modular Lights

RENTAL PRICE: \$6,683.02 Price includes graphics sales tax

PREMIUM CARPET COLOR:

- Beige Black Burgundy Charcoal Cobalt Grape Soda Emerald
 Graphite Ice Ivory Key Lime Lemon Drop Navy Midway Blue
 Nu Blue Platinum Red Royal Blue Silver Cloud White Tuitti Fruitti

REMOVE SIDE WALL(s)?
 Left side Right side

Item #SEG03B



Select

10' X 20' PREMIUM BACK-LIT S.E.G. EXHIBIT *(select options below)*

- Includes:**
- (1) Seamless Fabric Back Wall Graphic
 - (1) Opaque Liner for Back Side of Exhibit - Grey Fabric Only
 - (1) 10'x20' Premium Carpet w/ Padding & Plastic Covering
 - (2) .5M w x 2.5M h Side Walls - Grey Infill Panels
 - (2) 2M w x 1M h Side Walls - Grey Infill Panels
 - Internal Lighting

RENTAL PRICE: \$8,800.05 Price includes graphics sales tax

PREMIUM CARPET COLOR:

- Beige Black Burgundy Charcoal Cobalt Grape Soda Emerald
 Graphite Ice Ivory Key Lime Lemon Drop Navy Midway Blue
 Nu Blue Platinum Red Royal Blue Silver Cloud White Tuitti Fruitti

REMOVE SIDE WALL(s)?
 Left side Right side

Note: Rigid graphic panels are printed on 3mm thick cardboard. Non-graphic infill panels come in standard grey PVC. All printed S.E.G. fabric panels are purchases. The printed fabric panels may be kept following the show. Fabric panels left behind after the show will be disposed of. For additional options and costs, contact an Art Craft representative at modular@artcraftdisplay.com. All items are based upon availability. All other rental furnishings and electrical service must be ordered separately. Packages cannot be changed or substituted. No refunds, exchanges or credits for any booth package items.

Company Name

Event Name
2025 Great Lakes Floral & Event Expo

Booth Number

COUNTERS



Curved Reception Counter
 0110 - \$553.40



1M x .5M x .5M Counter
 0100 - \$296.08



1M x 1M x .5M Counter
 0105 - \$498.06

DISPLAY CASES



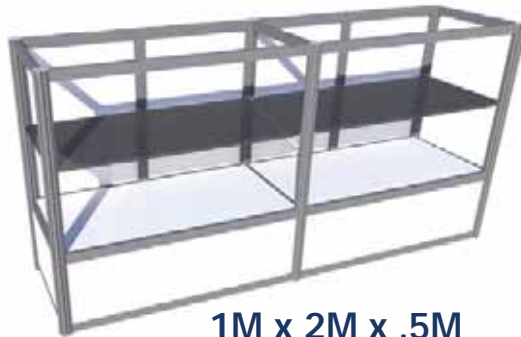
2.5M x .5M x .5M Display Case
 0143 - \$747.10



1M x 1.5M x .5M Display Case
 0142 - \$913.12



1M x 1M x .5M Display Case
 0140 - \$747.10



1M x 2M x .5M Display Case
 0141 - \$1,162.14



2.5M x 1M x .5M Display Case
 0144 - \$913.12

Note: Counters and display cases all come with locking doors (except for curved reception counters and 1M x .5M x .5M counters). Display cases come equipped with internal lighting (power not included). All items are based upon availability. All other rental furnishings and electrical service must be ordered separately. For questions and availability, please contact an Art Craft representative at modular@artcraftdisplay.com.

Company Name

Event Name
2025 Great Lakes Floral & Event Expo

Booth Number

ADDITIONAL ITEMS



Additional Shelf
White - 0965DS - \$101.01
Clear - 0965SA - \$101.01



Modular Display Light
0130 - \$67.83



8' Closet with Lock
1M w x .5M d
(cannot be ordered alone)

DOOR - \$553.40

PLEASE SELECT:
(placement on back wall)

- left
- center
- right

Please submit all applicable Modular Exhibit Rental forms, along with our Contact & Payment Information form. Once your order has been placed, our graphics department will reach out to you with instructions and deadlines for creating and submitting your art files for your exhibit graphics. Installation & dismantle labor is included with all modular exhibit rental orders.

Vacuuming not included on multiple day shows. See Vacuuming Services form if needed.

Order Deadline: Fourteen (14) days prior to first move-in day.

QTY	ITEM #	DESCRIPTION:	PRICE (EA.)	SUB-TOTAL
	0060	10' x 10' STANDARD EXHIBIT	\$2,367.50	
	0061CC	10' x 10' PREMIUM EXHIBIT (price includes sales tax)	\$3,807.40	
	SEG01	10' x 10' PREMIUM S.E.G. EXHIBIT (price includes sales tax)	\$4,024.44	
	SEG01B	10' x 10' PREMIUM BACK-LIT S.E.G. EXHIBIT (price includes sales tax)	\$5,046.74	
	0061	10' x 15' STANDARD EXHIBIT	\$2,944.74	
	0061DD	10' x 15' PREMIUM EXHIBIT (price includes sales tax)	\$5,040.06	
	SEG02	10' x 15' PREMIUM S.E.G. EXHIBIT (price includes sales tax)	\$5,315.50	
	SEG02B	10' x 15' PREMIUM BACK-LIT S.E.G. EXHIBIT (price includes sales tax)	\$6,886.30	
	0061AA	10' x 20' STANDARD EXHIBIT	\$3,594.60	
	0061EE	10' x 20' PREMIUM EXHIBIT (price includes sales tax)	\$6,256.62	
	SEG03	10' x 20' PREMIUM S.E.G. EXHIBIT (price includes sales tax)	\$6,683.02	
	SEG03B	10' x 20' PREMIUM BACK-LIT S.E.G. EXHIBIT (price includes sales tax)	\$8,800.05	
	0110	CURVED RECEPTION COUNTER	\$553.40	
	0100	1M x .5M x .5M COUNTER	\$296.08	
	0105	1M x 1M x .5M COUNTER	\$498.06	
	0140	1M x 1M x .5M DISPLAY CASE	\$747.10	
	0142	1M x 1.5M x .5M DISPLAY CASE	\$913.12	
	0141	1M x 2M x .5M DISPLAY CASE	\$1,162.14	
	0143	2.5M x .5M x .5M DISPLAY CASE	\$747.10	
	0144	2.5M x 1M x .5M DISPLAY CASE	\$913.12	
	0965DS	ADDITIONAL WALL SHELF - White	\$101.01	
	0965SA	ADDITIONAL DISPLAY CASE SHELF - Clear	\$101.01	
	0130	MODULAR DISPLAY LIGHT	\$67.83	
	DOOR	CLOSET with LOCK (cannot be ordered alone)	\$553.40	
			TOTAL	

Note: For additional options and costs, contact an Art Craft representative at modular@artcraftdisplay.com. All items are based upon availability. All other rental furnishings and electrical service must be ordered separately.



Art Craft Display, Inc. provides Material Handling services and equipment for numerous events throughout the Midwest. Our staff is dedicated to providing you with timely and reasonable handling of all your freight needs.

Inbound Freight Services

- Receipt of prepaid shipments up to 30 days in advance of set-up.
- Please contact our staff if you need to verify your freight arrival.
- Our general warehouse hours are 8:00 am to 4:30 pm Monday through Friday, Eastern Standard Time.
- We normally accept all types of freight in advance with few limitations. Please refer to your specific event information for guidelines.
- All shipments must be properly labeled with event name, dates, location, exhibiting firm name and booth number.
- All shipments must include a bill of lading or delivery slip showing the number of pieces, material description and weight.
- Payment in full of all charges must be made prior to delivery of shipments to your booth.

On-Site Freight Services

- For select events, shipments will be accepted only during designated exhibitor move-in times.
- Please refer to your specific event information for guidelines and availability.
- All shipments must include a bill of lading or delivery slip showing the number of pieces, material description and weight.
- Payment in full of all charges must be made prior to delivery of shipments to your booth.

Outbound Freight Services

- Please have your on-site representative complete and verify outbound shipping information at our service desk.
- Outbound freight will be shipped within two business days after close of the show.
- All shipments must have a completed Freight Handling form.
- After all materials are packed, labeled and ready to ship, you must return the Outbound Shipping Authorization to our service desk.
- You may call your designated carrier for pick-up on-site. However if your designated carrier fails to remove your freight by the final move-out time, your shipment will be re-routed by us at your expense.

Insurance and Security

- We strongly recommend that you insure all materials from the time they leave your firm until they are returned to you after the show. "All-Risk" coverage is suggested.
- Consistent with trade show industry practices, there may be a lapse of time between the delivery of your shipment(s) to your booth and your arrival. The same is true for the outbound phase of the show - the time between your departure and the actual pick-up of your materials. During these times, your materials will be left unattended. We highly recommend that you arrange for a representative to stay with your materials or that you hire security services to safeguard your materials. We will not be responsible for or liable for any loss, damage or disappearance of exhibitors' materials during the above unattended times.
- All materials handled by Art Craft Display, Inc. are subject to the Terms, Conditions and Policies included in your Service Manual.

V MC AE CKP _____ REC'D BY _____
 EXP. DATE _____ CKF _____ DATE _____
 CC# _____ \$ _____

RETURN TO: 3140 Three Mile NW • Grand Rapids, MI 49534 • (616)791-8024 • Fax (616)791-8154 • grandrapids@artcraftdisplay.com

SHOW NAME 2025 Great Lakes Floral & Event Expo	LOCATION DeVos Place	SHOW DATE Feb 28-Mar 2, 2025
COMPANY	PHONE	BOOTH #
AUTHORIZED CONTACT SIGNATURE		DATE
AUTHORIZED CONTACT - PLEASE PRINT		BOOTH SIZE _____ X _____

- **THIS FORM MUST PRECEDE YOUR SHIPMENT.**
- **A 200 LB. MINIMUM CHARGE PER SHIPMENT WILL APPLY (excluding envelopes).**
- **All orders must be accompanied by "Contact & Payment Information" form.**
- **All orders are subject to the enclosed Terms, Conditions and Policies.**
- **All freight is subject to re-weigh and you will be billed accordingly.**
- **ALL ORDERS MUST BE PAID IN FULL PRIOR TO DELIVERY OF FREIGHT TO YOUR BOOTH.**

**Credit Card
Information Required
with All Orders.**

WHERE TO SHIP

ADVANCED WAREHOUSE	ONSITE SHIPPING
<ul style="list-style-type: none"> • All shipments must be sent labeled as follows: TO: (EXHIBITING FIRM NAME) BOOTH#: _____ FOR: (EVENT NAME & DATE) DeVOS PLACE - C/O ART CRAFT DISPLAY, INC. 303 MONROE AVE NW GRAND RAPIDS, MI 49503 	<ul style="list-style-type: none"> • All shipments must be sent labeled as follows: TO: (EXHIBITING FIRM NAME) BOOTH#: _____ FOR: (EVENT NAME & DATE) DeVOS PLACE - C/O ART CRAFT DISPLAY, INC. 303 MONROE AVE NW GRAND RAPIDS, MI 49503

- All pieces should be labeled separately. Please use the enclosed shipping labels to expedite your shipment. You may make additional copies as needed.
- **CONSOLIDATE YOUR SHIPMENTS TO SAVE SEPARATE MINIMUM CHARGES.**
- **ABSOLUTELY NO PERISHABLE OR HAZARDOUS MATERIALS**

RATE SCHEDULE and TABLE	Under 5,000 pounds	5001 - 15,000 pounds	Over 15,000 pounds
INBOUND RATES w/ADVANCED WAREHOUSING	\$.77 per lb.	\$.70 per lb.	\$.60 per lb.
INBOUND RATES ONSITE	\$.61 per lb.	\$.54 per lb.	\$.44 per lb.
OUTBOUND RATES	\$.61 per lb.	\$.54 per lb.	\$.44 per lb.
ENVELOPE RATES	\$37.44 per envelope (max. dimensions: 16"x13")		

Exhibitor: Please complete this section.

A INBOUND FREIGHT (This completed form must precede your shipment) 1. Receipt of shipments and up to 30 days storage in advance of set-up 2. Delivery of materials to booth 3. Removal of crates and storage of same during show 4. A 200 LB. MINIMUM CHARGE PER SHIPMENT WILL APPLY (excluding envelopes)	ESTIMATED WEIGHT	ESTIMATED AMOUNT
		\$
B OUTBOUND SHIPMENTS 1. Return of crates, at close of the show, to your booth 2. Removal of shipments from booth and reloading same on outgoing carrier 3. A 200 LB. MINIMUM CHARGE PER SHIPMENT WILL APPLY (excluding envelopes)		\$

Special Handling Fees will apply to any single piece of freight that exceeds 4,000 lbs or 84" in width, depth or height. Please call for rates.

TOTAL EST. INBOUND FREIGHT HANDLING CHARGES A	\$	TOTAL EST. OUTBOUND FREIGHT HANDLING CHARGES B	\$
ESTIMATED INBOUND / OUTBOUND FREIGHT HANDLING CHARGES SUB-TOTAL A + B		\$	

	ADVANCE	FLOOR	
BANDING SERVICES: _____ pcs. @	\$50.81 / piece	\$64.00 / piece	\$
SHRINK WRAP SERVICES: _____ pcs. @	\$50.81 / piece	\$64.00 / piece	\$
ENVELOPES: _____ envelopes @ \$37.44 / envelope			\$
TOTAL ESTIMATED FREIGHT HANDLING CHARGES			\$

Art Craft
DISPLAY, INC.
A DIVISION OF ART CRAFT SERVICE GROUP

**EXHIBIT
FREIGHT**

RUSH

DP

TO: _____
(EXHIBITING FIRM NAME) (BOOTH #)

C/O ART CRAFT DISPLAY, INC.
DeVOS PLACE
303 MONROE AVE NW
GRAND RAPIDS, MI 49503
1(800)292-2033
grandrapids@artcraftdisplay.com

EVENT NAME:
2025 Great Lakes Floral & Event Expo

LOCATION: **DeVos Place** EVENT DATES: **Feb 28-Mar 2, 2025**

PIECE # _____ OF _____ TOTAL PIECES

CARRIER: _____

PLEASE LABEL EACH PIECE

GR 2025

Art Craft
DISPLAY, INC.
A DIVISION OF ART CRAFT SERVICE GROUP

**EXHIBIT
FREIGHT**

RUSH

DP

TO: _____
(EXHIBITING FIRM NAME) (BOOTH #)

C/O ART CRAFT DISPLAY, INC.
DeVOS PLACE
303 MONROE AVE NW
GRAND RAPIDS, MI 49503
1(800)292-2033
grandrapids@artcraftdisplay.com

EVENT NAME:
2025 Great Lakes Floral & Event Expo

LOCATION: **DeVos Place** EVENT DATES: **Feb 28-Mar 2, 2025**

PIECE # _____ OF _____ TOTAL PIECES

CARRIER: _____

PLEASE LABEL EACH PIECE

GR 2025

Art Craft
DISPLAY, INC.
A DIVISION OF ART CRAFT SERVICE GROUP

**EXHIBIT
FREIGHT**

RUSH

DP

TO: _____
(EXHIBITING FIRM NAME) (BOOTH #)

C/O ART CRAFT DISPLAY, INC.
DeVOS PLACE
303 MONROE AVE NW
GRAND RAPIDS, MI 49503
1(800)292-2033
grandrapids@artcraftdisplay.com

EVENT NAME:
2025 Great Lakes Floral & Event Expo

LOCATION: **DeVos Place** EVENT DATES: **Feb 28-Mar 2, 2025**

PIECE # _____ OF _____ TOTAL PIECES

CARRIER: _____

PLEASE LABEL EACH PIECE

GR 2025

Art Craft
DISPLAY, INC.
A DIVISION OF ART CRAFT SERVICE GROUP

**EXHIBIT
FREIGHT**

RUSH

DP

TO: _____
(EXHIBITING FIRM NAME) (BOOTH #)

C/O ART CRAFT DISPLAY, INC.
DeVOS PLACE
303 MONROE AVE NW
GRAND RAPIDS, MI 49503
1(800)292-2033
grandrapids@artcraftdisplay.com

EVENT NAME:
2025 Great Lakes Floral & Event Expo

LOCATION: **DeVos Place** EVENT DATES: **Feb 28-Mar 2, 2025**

PIECE # _____ OF _____ TOTAL PIECES

CARRIER: _____

PLEASE LABEL EACH PIECE

GR 2025

Art Craft DISPLAY, INC. <small>A DIVISION OF ART CRAFT SERVICE GROUP</small>	<h1 style="margin:0;">FORK LIFT SERVICES</h1>	ART CRAFT USE ONLY
		V <input type="checkbox"/> MC <input type="checkbox"/> AE <input type="checkbox"/> CKP _____ REC'D BY _____ EXP. DATE _____ CKF _____ DATE _____ CC# _____ \$ _____
RETURN TO: 3140 Three Mile NW • Grand Rapids, MI 49534 • (616)791-8024 • Fax (616)791-8154 • grandrapids@artcraftdisplay.com		
SHOW NAME	LOCATION	SHOW DATES
2025 Great Lakes Floral & Event Expo	DeVos Place	Feb 28-Mar 2, 2025
COMPANY	BOOTH #	BOOTH SIZE _____ X _____
ADDRESS	address	city state zip
PHONE	FAX	EMAIL
AUTHORIZED CONTACT SIGNATURE	AUTHORIZED CONTACT - PLEASE PRINT	DATE

- Advance Order Deadline: Fourteen (14) days prior to first move-in day.**
- No refunds, exchanges or credits for any booth package items.**
- All orders must be accompanied by "Contact & Payment Information" form.**
- All orders are subject to the enclosed Terms, Conditions and Policies.**
- Availability of this service cannot be guaranteed if not ordered in advance!! Please determine if this service is to be provided as part of your agreement with show management. If not, this form MUST be completed and returned according to conditions herein.**
- Advance payment of all requested fork lift services (in/out) is required with your order.**

**Credit Card Information
Required with All Orders.**

STANDARD SERVICE		
Up to 4,000 pound capacity fork lift with operator for unloading, installation, uncrating, unskidding, dismantling, crating, skidding, reloading and any special handling of your equipment, machinery or freight, due to size or weight. FLOOR RATE applies to <i>any order received within 14 days prior to show or placed on-site.</i>	ADVANCE	FLOOR
	192.10 per hour	241.00 per hour
	One hour minimum for move-in AND one hour minimum for move-out. Partial hours, after minimum, prorated to nearest 1/2 hour.	
SPECIAL SERVICE		
Call for quotation for capacities over 4,000 pounds or if rigging equipment and labor are required.		

EXHIBITOR: Please complete this section			
	TIME	DATE	RATE
MOVE-IN	Fork Lift & Operator needed at _____ <input type="checkbox"/> AM <input type="checkbox"/> PM on _____ for _____ hours x \$ _____ per hr. = \$ _____		
	Fork Lift & Operator needed at _____ <input type="checkbox"/> AM <input type="checkbox"/> PM on _____ for _____ hours x \$ _____ per hr. = \$ _____		
	Fork Lift & Operator needed at _____ <input type="checkbox"/> AM <input type="checkbox"/> PM on _____ for _____ hours x \$ _____ per hr. = \$ _____		
MOVE-OUT	Fork Lift & Operator needed at _____ <input type="checkbox"/> AM <input type="checkbox"/> PM on _____ for _____ hours x \$ _____ per hr. = \$ _____		
	Fork Lift & Operator needed at _____ <input type="checkbox"/> AM <input type="checkbox"/> PM on _____ for _____ hours x \$ _____ per hr. = \$ _____		
	Fork Lift & Operator needed at _____ <input type="checkbox"/> AM <input type="checkbox"/> PM on _____ for _____ hours x \$ _____ per hr. = \$ _____		
<ul style="list-style-type: none"> <i>Please check-in at Service Desk when ready for service</i> <i>Always inform us if more than one fork lift is needed.</i> 		TOTAL ESTIMATED FORK LIFT SERVICE	\$
		DEPOSIT AMOUNT ENCLOSED	\$

DO NOT FILL IN BELOW - Art Craft Use Only			
Move-In: _____ forklifts for _____ hrs. @ \$ _____ /hr	\$	SUB-TOTAL FORK LIFT CHARGES	\$
Move-In: _____ forklifts for _____ hrs. @ \$ _____ /hr	\$	ADDITIONAL LABOR CHARGES	\$
Move-Out: _____ forklifts for _____ hrs. @ \$ _____ /hr	\$	TOTAL NON-TAXABLE FORK LIFT CHARGES	\$
Move-Out: _____ forklifts for _____ hrs. @ \$ _____ /hr	\$	ADVANCE PAYMENT RECEIVED	\$
Additional Charges: _____	\$	BALANCE DUE	\$

<h1 style="margin:0;">Art Craft</h1> <p style="margin:0; font-size: small;">DISPLAY, INC. A DIVISION OF ART CRAFT SERVICE GROUP</p>	<h2 style="margin:0;">SIGN & BANNER HANGING / HIGH LIFT SERVICES</h2>	ART CRAFT USE ONLY	
		V <input type="checkbox"/> MC <input type="checkbox"/> AE <input type="checkbox"/> CKP _____ REC'D BY _____ EXP. DATE _____ CKF _____ DATE _____ CC# _____ \$ _____	
		RETURN TO: 3140 Three Mile NW • Grand Rapids, MI 49534 • (616)791-8024 • Fax (616)791-8154 • grandrapids@artcraftdisplay.com	
SHOW NAME	LOCATION	SHOW DATES	
2025 Great Lakes Floral & Event Expo	DeVos Place	Feb 28-Mar 2, 2025	
COMPANY	ADDRESS	BOOTH #	BOOTH SIZE _____ X _____
PHONE	FAX	EMAIL	
AUTHORIZED CONTACT SIGNATURE		AUTHORIZED CONTACT - PLEASE PRINT	
		DATE	

- Advance Order Deadline: Fourteen (14) days prior to first move-in day.**
- All orders must be accompanied by "Contact & Payment Information" form.**
- All orders are subject to the enclosed Terms, Conditions and Policies.**
- Advance payment for all requested labor (in/out) is required with your order.**

**Credit Card Information
Required with All Orders.**

RATES (One hour minimum Move-In / One hour minimum Move-Out)		
	ADVANCE	FLOOR
HIGH LIFT/SIGN & BANNER HANGING <i>(includes 1-Scissor Lift & 1-Rigger)</i>	339.36 Per Hour	425.00 Per Hour
ADDITIONAL RIGGING LABOR	105.64 Per Man / Per Hour	133.00 Per Man / Per Hour

EXHIBITOR: Please complete this section						
	QTY.	ESTIMATED TIME	DATE	APPROX. HRS.	RATE	ESTIMATED TOTAL
MOVE-IN (INSTALL)	___	High Lift(s) & Rigger(s) needed at _____	<input type="checkbox"/> AM <input type="checkbox"/> PM	on _____	for _____ hours x \$ _____	per hr. = \$ _____
	___	High Lift(s) & Rigger(s) needed at _____	<input type="checkbox"/> AM <input type="checkbox"/> PM	on _____	for _____ hours x \$ _____	per hr. = \$ _____
	___	Additional Rigger(s) needed at _____	<input type="checkbox"/> AM <input type="checkbox"/> PM	on _____	for _____ hours x \$ _____	per hr. = \$ _____
	___	Additional Rigger(s) needed at _____	<input type="checkbox"/> AM <input type="checkbox"/> PM	on _____	for _____ hours x \$ _____	per hr. = \$ _____
MOVE-OUT (REMOVE)	___	High Lift(s) & Rigger(s) needed at _____	<input type="checkbox"/> AM <input type="checkbox"/> PM	on _____	for _____ hours x \$ _____	per hr. = \$ _____
	___	High Lift(s) & Rigger(s) needed at _____	<input type="checkbox"/> AM <input type="checkbox"/> PM	on _____	for _____ hours x \$ _____	per hr. = \$ _____
	___	Additional Rigger(s) needed at _____	<input type="checkbox"/> AM <input type="checkbox"/> PM	on _____	for _____ hours x \$ _____	per hr. = \$ _____
	___	Additional Rigger(s) needed at _____	<input type="checkbox"/> AM <input type="checkbox"/> PM	on _____	for _____ hours x \$ _____	per hr. = \$ _____

<ul style="list-style-type: none"> <i>Please check-in at Service Desk when ready for service</i> <i>Always inform us if more than one high lift is needed.</i> 	TOTAL ESTIMATED HIGH LIFT SERVICE \$ _____
--	---

OPTIONAL HANGING BANNER FRAME RENTAL			
Banners attach to frames with pole pockets (top & bottom edge). Assembly labor included. Hanging/removal labor must be ordered in advance (see above).			
QTY		ADVANCE	FLOOR
	6' wide, 3-sided Hanging Banner Frame w/ Harness <i>(Variable banner print height)</i>	190.46	239.00
	8' wide, 3-sided Hanging Banner Frame w/ Harness <i>(Variable banner print height)</i>	211.88	265.00
	10' wide, 3-sided Hanging Banner Frame w/ Harness <i>(Variable banner print height)</i>	234.70	294.00
	6' wide, 4-sided Hanging Banner Frame w/ Harness <i>(Variable banner print height)</i>	219.94	275.00
	8' wide, 4-sided Hanging Banner Frame w/ Harness <i>(Variable banner print height)</i>	254.82	319.00
	10' wide, 4-sided Hanging Banner Frame w/ Harness <i>(Variable banner print height)</i>	270.87	339.00

<i>To order graphics for the hanging banner frames above, contact our Sign & Graphics department at 800.878.0710 or signshop@artcraftdisplay.com</i>	TOTAL BANNER FRAME RENTAL (NON-TAXABLE) \$ _____
--	---

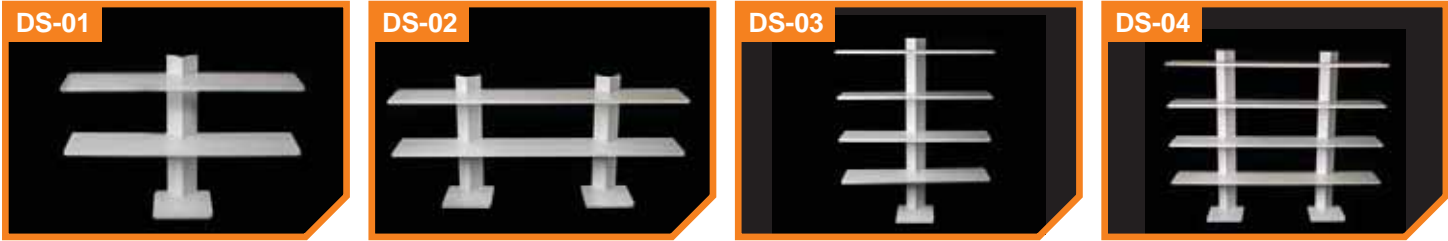
- Art Craft Display, Inc. will not mount, hang, lift, drop, disassemble or otherwise participate in any of the following:**
 - Truss systems of any kind
 - Sound projection devices
 - Lighting trusses or individual fixtures
 - Monitors or video boards
- Art Craft Display, Inc. may also, at its sole discretion, refuse to hang any item that they deem unsafe by any condition of size, weight, structure, overhead position or due to inadequate operating space. It is the exhibitor's sole responsibility to ascertain all pre-conditions prior to placing any orders with Art Craft Display, Inc.**
- Art Craft Display reserves the right to use additional Riggers, High Lifts and/or Fork Lifts to properly install/remove your sign or banner and charge exhibitor accordingly.**
- Additional charges will apply if specialty materials are required to complete this order.**
- Before placing your order, please check your contract from show management to see if permission is needed to hang a banner above your specific booth space.**
- Based on your booth location, banner hanging restrictions and or modifications may apply.**

 <p style="text-align: center;">PRODUCT DISPLAY SHELF RENTAL</p>	ART CRAFT USE ONLY	
	V <input type="checkbox"/> MC <input type="checkbox"/> AE <input type="checkbox"/> CKP _____ REC'D BY _____ EXP. DATE _____ CKF _____ DATE _____ CC# _____ \$ _____	
RETURN TO: 3140 Three Mile NW • Grand Rapids, MI 49534 • (616)791-8024 • Fax (616)791-8154 • grandrapids@artcraftdisplay.com		
SHOW NAME 2025 Great Lakes Floral & Event Expo	LOCATION DeVos Place	SHOW DATES Feb 28-Mar 2, 2025
COMPANY _____	BOOTH # _____	BOOTH SIZE _____ X _____
ADDRESS _____ address _____ city _____ state _____ zip _____		
PHONE _____ FAX _____ EMAIL _____		
AUTHORIZED CONTACT SIGNATURE _____	AUTHORIZED CONTACT - PLEASE PRINT _____	DATE _____

- **Advance Order Deadline: Fourteen (14) days prior to first move-in day.**
- **No refunds, exchanges or credits for any booth package items.**
- **All orders must be accompanied by "Contact & Payment Information" form**
- **All orders are subject to the enclosed Terms, Conditions and Policies.**

**Credit Card Information
Required with All Orders.**

NON-TAXABLE PRODUCT DISPLAY SHELF RENTAL ITEMS



Product display shelves will be delivered to customer's booth unassembled. Customer is responsible for assembly/disassembly. Vertical spacing between shelves is 12". Shelf depth is 11.5".

TABLETOP PRODUCT DISPLAY SHELVES <i>(table not included)</i>				
QTY.	DESCRIPTION	ADVANCE	FLOOR	AMOUNT
	DS-01 4ft wide, 2-shelf tabletop product display shelf (48"w x 32"h x 11"d)	61.05	77.00	
	DS-02 6ft wide, 2-shelf tabletop product display shelf (72"w x 32"h x 11"d)	87.36	110.00	
FREESTANDING PRODUCT DISPLAY SHELVES				
	DS-03 4ft wide, 4-shelf freestanding product display shelf (48"w x 49"h x 11"d)	87.36	110.00	
	DS-04 6ft wide, 4-shelf freestanding product display shelf (72"w x 49"h x 11"d)	122.09	153.00	

TOTAL NON-TAXABLE PRODUCT DISPLAY SHELF ITEMS \$

Terms, Conditions and Policies page one

CONTRACTUAL AGREEMENT

The Terms, Conditions and Policies set forth below become a part of the contractual agreement between Art Craft Display, Inc. (ART CRAFT) and You, the Exhibitor. Acceptance of said terms, conditions and policies will be construed when any of the following conditions are met:

- WHEN ANY SERVICE, PAYMENT OR ORDER FORM IS SIGNED AND RETURNED TO ART CRAFT; **OR**
- WHEN ANY SERVICE OR EQUIPMENT ORDER IS PLACED BY AN EXHIBITOR WITH ART CRAFT; **OR**
- WHEN ANY WORK IS PERFORMED ON BEHALF OF EXHIBITOR, BY LABOR SECURED THROUGH ART CRAFT.

CONTRACTUAL TERMS DEPEND ON THE NATURE OF SERVICES SECURED BY EXHIBITOR THROUGH ART CRAFT. TERMS, CONDITIONS AND POLICIES MAY VARY FOR EACH TYPE OF SERVICE ORDERED THROUGH ART CRAFT.

DEFINITIONS

The name "Art Craft Display, Inc." (ART CRAFT) shall be construed within the meaning of this contract as ART CRAFT, and their employees, officers, directors, agents and assigns, affiliated companies and related entities including but not limited to any subcontractors ART CRAFT may appoint. The term "Exhibitor" shall be construed within the meaning of this contract as YOU and/or the EXHIBITOR and/or SHIPPER, and/or its employees, agents, representatives, and/or any Exhibitor Appointed Contractor (E.A.C.) for all purposes and circumstances, notwithstanding anything contained herein to the contrary.

PAYMENT TERMS

1. RENTAL OF EQUIPMENT: The rental furnishings are the property of ART CRAFT and are rented to YOU subject to this contract for rental charges except where specifically identified as a sale. All ART CRAFT rentals include delivery, installation and removal from EXHIBITOR'S booth. If YOU fail to leave the equipment or furnishings in your booth at the close of the show, ART CRAFT, to enforce its property ownership of the equipment or furnishings and to protect its interest under this contract, may retake the equipment or furnishings at any time and to do so may enter your property, and YOU hereby waive any right of action against ART CRAFT for such entry and retaking. In addition, YOU acknowledge that the failure to relinquish rented equipment or furnishings within the contracted time and the sale or concealment of rented equipment or furnishings are prohibited, and that such action may constitute a crime. ART CRAFT may notify the authorities and take other action, including the filing of criminal complaints, subjecting YOU to prosecution. Equipment or furnishings will be picked up at your booth at the close of the show. If YOU leave early, please notify our Service Desk.

2. EXECUTION OF SERVICES: Labor costs are included as part of the specified rental equipment fees (unless otherwise noted).

3. PAYMENT POLICY: Payment in full of rental and service charges must accompany your orders, and be received by ART CRAFT by the appropriate deadlines to qualify for advance rates. All payments must be in U.S. funds and all checks must be drawn on a U.S. bank. Orders received without payment, orders received after deadline dates, or orders placed at the show will be charged floor rates. Purchase orders are not considered payment. **All orders must be paid in full prior to delivery of equipment or execution of services. All claims must be made prior to show closing. Absolutely no credits will be issued after that time.**

4. CHARGES AND PAYMENTS: YOU are responsible for rental and service charges from the time the equipment or furnishings are rented until the close of the show and other charges hereunder. The equipment or furnishings are to be clean and in good condition at the close of the show. If the rental fees are charged to someone other than the EXHIBITOR, the Renter therefore represents that he/she is an E.A.C. of the EXHIBITOR and has the right to charge this rental; the EXHIBITOR nevertheless will remain liable for any charges and for all other obligations. If EXHIBITOR is exempt from payment of sales tax, ART CRAFT requires an exemption certificate for the State in which the services are to be used. ART CRAFT reserves the right to charge EXHIBITOR for the difference between the EXHIBITOR'S estimate of charges and the actual charges incurred by EXHIBITOR, or for any charges that ART CRAFT may be obligated to pay on behalf of EXHIBITOR, including without limitation, any shipping charges.

5. CANCELLATION POLICY FOR ANY CANCELLED ORDERS AND/OR CANCELLED EVENTS:

- a. Cancellations within 7 days of the first move-in day will be subject to a 50% administrative fee on all items and services ordered, with the exception of (c) below.
- b. Cancellations made after the initial move-in has begun, will not be eligible for a refund for any items or services ordered.
- c. At any date of cancellation, Exhibitor will be invoiced in full for any orders in which costs have been incurred by Art Craft Display for any purchases and/or work undertaken to fulfill the order. This includes, but is not limited to, orders for signs, banners, displays, SEG fabrics, custom shelves or countertops, premium carpet and freight received.

6. COLLECTION: YOU agree to pay all costs of collection by ART CRAFT of any amounts due hereunder, including actual attorney's fees. YOU further agree that, in the event any action arising out of or related to the Agreement between YOU and ART CRAFT, and ART CRAFT prevails, YOU shall pay ART CRAFT its actual attorney's fees and other costs incurred as a result of or in connection with such action. To the extent state law limits the recoverability of attorney's fees, ART CRAFT shall be entitled to recover its fees up to the maximum amount by state law.

7. JURISDICTION: The Agreement is governed by the laws of the state where the ART CRAFT branch pertinent to the transaction is situated. Any action arising out of or related to the Agreement shall be brought, at ART CRAFT'S discretion, either in a court with jurisdiction over the county in which the pertinent ART CRAFT branch is situated, in the county in which the project for which the goods are to be used is located, or in a court or before an arbitration panel where an action between ART CRAFT and a third party is pending which concerns the subject matter of the Agreement. To the extent allowed by law, YOU waive your right to a trial by jury in any action brought upon, or by reason of, the Agreement.

EQUIPMENT: GENERAL CONDITIONS AND POLICIES

1. EQUIPMENT AVAILABILITY AND POSSESSION: Ordering early saves you time and money. Availability of equipment on the show floor cannot be guaranteed. Possession of unverified or unpaid equipment shall result in a) confiscation of equipment, or b) payment of full rental charges (at floor rate) upon demand.

2. RESPONSIBILITY FOR EQUIPMENT OR FURNISHINGS: From the time the equipment or furnishings are rented, YOU are responsible for it. If the equipment or furnishings are lost, stolen or damaged under any circumstances while rented, regardless of fault, YOU shall be responsible for all charges, including labor costs, to replace or repair the equipment or furnishings.

3. USE OF RENTAL EQUIPMENT OR FURNISHINGS: YOU agree that the equipment or furnishings will be used only for the purpose for which they were manufactured and intended. Subleasing or improper use is prohibited.

4. RESPONSIBILITY FOR USE: YOU are responsible for the use of the rented equipment or furnishings. YOU assume all risks inherent in the operation and use of the equipment or furnishings. YOU agree to assume the entire responsibility for the defense of, and to pay, indemnify and hold ART CRAFT harmless from, and hereby release ART CRAFT from, any and all claims for damages to property or bodily injury (including death) resulting from the use, operation or possession of the equipment or furnishings, whether or not it is claimed or found that such damage or injury resulted from the defective condition of the equipment or furnishings or from any cause. YOU agree that no warranties, express or implied, have been made in connection with this rental. In the event of any dispute between EXHIBITOR and ART CRAFT relative to any loss, damage, or claim, such EXHIBITOR shall not be entitled to and shall not withhold payment, or any partial payment, due to ART CRAFT for its services, as an offset against the amount of any alleged loss or damage. Any claim against ART CRAFT shall be considered a separate transaction, and shall be resolved on its own merits.

5. EQUIPMENT OR FURNISHINGS FAILURE: In the event any rented equipment or furnishings should become unsafe or damaged, or ceases to be in good working order, YOU will discontinue use so as to prevent further damage to the equipment or injury or damage to persons or property. It is the EXHIBITOR'S responsibility to advise ART CRAFT personnel of any problem with any order. Upon notification, ART CRAFT shall make a reasonable effort to replace or repair such equipment or furnishings provided it has personnel or equipment or furnishings available; however ART CRAFT shall not be responsible for damages or injury including consequential damages resulting from failure or any defect of the rental equipment or furnishings.

6. COLOR SELECTIONS: Indicate color where applicable. Choices not indicated by EXHIBITOR will be selected by ART CRAFT to coordinate with show colors. ART CRAFT reserves the right to select or change colors based upon availability.

LABOR (Including High Lift and Fork Lift Services): GENERAL CONDITIONS AND POLICIES

1. WORK RULES: Show Management and/or EXHIBITORS are not required to use Art Craft Display, Inc. (ART CRAFT) labor for loading/unloading, delivery/removal or installation/dismantle of any equipment, literature, etc. that they choose to handle themselves. In most cases, 4-wheel stock carts will be available on site for your use. Drayage and material handling equipment charges may apply depending on your agreement with show management regarding those services. Although the utmost care will be exercised, ART CRAFT is not responsible for resulting damage or loss from improper packing, concealed damage, theft or any other cause.

2. PERSONNEL CONDITIONS: ART CRAFT has been selected by show management as the official labor provider for this event. ART CRAFT provides all necessary labor from its own designated labor pool for execution of said services. All prices are based entirely upon labor services provided only by the ART CRAFT designated labor pool. If any labor services are provided or required by outside labor groups, whether by request, demand, coercion or circumstance, Show Management shall be responsible for all costs incurred directly to the outside labor groups; excluding some labor requests from EXHIBITORS which are normally the EXHIBITOR'S responsibility for payment as outlined herein. Also, if Show Management secures use of outside labor, Show Management and their EXHIBITORS agree jointly and/or separately to indemnify and hold harmless ART CRAFT and their agents for all claims of disruption of service, delays or any cause of action which is beyond the direct control of ART CRAFT. This and all orders are accepted subject to these conditions. Additional personnel or equipment may be used, if the supervisor deems such is necessary to safely complete the installation and/or dismantling of exhibit and will be charged accordingly.

3. LABOR PROVIDED UNDER THE SUPERVISION OF ART CRAFT:

- A. RESPONSIBILITIES:** ART CRAFT shall be responsible for the performance of labor provided under this option. ART CRAFT cannot assume responsibility for any acts of, or loss to, persons, parties and/or other contracting firms not under ART CRAFT'S direct supervision and control. In no event shall ART CRAFT be liable for loss or damage caused by delay in labor beginning work when EXHIBITOR requests labor to begin later than the start of the working day. ART CRAFT shall not be responsible for loss, delay or damage due to strike, lockouts, and/or work stoppages, or other causes beyond ART CRAFT'S reasonable control.
- B. INDEMNIFICATION:** ART CRAFT agrees to indemnify, hold harmless, and defend EXHIBITOR from and against any and all demands, claims, causes of action, fines, penalties, damages, liabilities, judgments, and expenses (including but not limited to reasonable attorneys' fees and investigation costs) for bodily injury, including any injury to ART CRAFT employees, or property damage arising out of work performed by labor provided by and supervised by ART CRAFT, except when EXHIBITOR exercises direction and/or control over the work being performed.

4. LABOR PROVIDED UNDER THE SUPERVISION OF EXHIBITOR:

- A. RESPONSIBILITIES:** EXHIBITOR shall be responsible for the performance of labor provided under this section. It is the responsibility of EXHIBITOR to supervise labor secured through ART CRAFT in a reasonable manner as to prevent bodily injury and/ or property damage and also to direct them to work in a manner that is in compliance with ART CRAFT Safe Work Rules and/or Federal, State, County and Local ordinances, rules and/or regulations, including but not limited to Show or Facility Management Rules and/or Regulations. It is the responsibility of EXHIBITOR to check in with the Service Desk to pick up labor, and to return to the Service Desk to release labor when the work is completed.
- B. INDEMNIFICATION:** EXHIBITOR agrees to indemnify, hold harmless, and defend ART CRAFT from and against any and all demands, claims, causes of action, fines, penalties, damages, liabilities, judgments, and expenses (including but not limited to reasonable attorneys' fees and investigation costs) for bodily injury, including any injury to ART CRAFT employees, and/or property damage arising out of work performed by labor provided by ART CRAFT but supervised by EXHIBITOR. Further, EXHIBITOR'S indemnification of ART CRAFT includes any and all violations of Federal, State, County or Local ordinances, "Show regulations and/or Rules" as published and/or set forth by Facility or Show Management, and/or directing labor provided by ART CRAFT to work in a manner that violates any of the above rules, regulations, and/or ordinances.

MATERIAL HANDLING: GENERAL CONDITIONS AND POLICIES

CONTRACTUAL AGREEMENT

The Terms, Conditions and Policies set forth below become a part of the contractual agreement between Art Craft Display, Inc. (ART CRAFT) and You, the Exhibitor. Acceptance of said terms, conditions and policies will be construed when any of the following conditions are met:

- WHEN EXHIBITOR'S MATERIALS ARE DELIVERED TO ART CRAFT OR TO THE SHOW SITE FOR WHICH ART CRAFT IS THE OFFICIAL SHOW CONTRACTOR; **OR**
- WHEN ANY SERVICE, PAYMENT OR ORDER FORM IS SIGNED AND RETURNED TO ART CRAFT; **OR**
- WHEN ANY SERVICE OR EQUIPMENT ORDER IS PLACED BY AN EXHIBITOR WITH ART CRAFT; **OR**
- WHEN ANY WORK IS PERFORMED ON BEHALF OF EXHIBITOR, BY LABOR SECURED THROUGH ART CRAFT.

CONTRACTUAL TERMS DEPEND ON THE NATURE OF SERVICES SECURED BY EXHIBITOR THROUGH ART CRAFT. TERMS, CONDITIONS AND POLICIES MAY VARY FOR EACH TYPE OF SERVICE ORDERED THROUGH ART CRAFT.

DEFINITIONS

The term "Material Handling" shall be construed within the meaning of this contract as MATERIAL HANDLING and/or MATERIALS and/or FREIGHT HANDLING and/or FREIGHT and/or DRAYAGE for all purposes and circumstances, notwithstanding anything contained herein to the contrary.

1. CHARGES AND PAYMENTS : Payment in full of all drayage charges must be made prior to delivery of equipment or execution of services, in **US Funds only**. All drayage charges from ART CRAFT are separate from any carrier charges you may incur. Under no circumstance will ART CRAFT be responsible for any freight carrier charges. Late shipment charges may apply for shipments requiring special delivery arrangements. Additional charges will be made on any shipments if they require RECRATING, PALLETING, BANDING or SPECIAL HANDLING. Special handling is defined as, but not limited to, shipments received or loaded out that cannot be unloaded/reloaded at the dock; or packed in such a way that would require additional handling and/or special equipment to unload/reload (i.e. double-decking, un-stacking, side door unloading/reloading, ground unloading/reloading).

2. TYPES OF FREIGHT: ART CRAFT reserves the right, at EXHIBITOR'S expense, to refuse or re-route the following types of freight; hazardous materials, perishable materials, and any freight considered oversize or overweight by definition of ART CRAFT. Any additional expenses incurred by ART CRAFT to handle the above freight items will be charged to the EXHIBITOR.

3. PACKAGING AND CRATES: ART CRAFT shall not be responsible for damage to loose, uncrated materials, pad-wrapped or shrink-wrapped materials, glass breakage, concealed damage, carpets in bags or poly, or materials improperly packed. In addition, ART CRAFT shall not be responsible for crates and packages which are unsuitable for handling, in poor condition, or have prior damage. Crates and packages should be of a design to adequately protect contents for handling by forklift and similar means.

4. INBOUND SHIPMENT: Shipments will be received with **PREPAID** carrier charges only. Collect shipments will be refused. Standard shipping hours are M-F 8am to 4:30pm EST. All inbound shipments are required to have a bill of lading or delivery slip which includes the number of pieces, material description, weight and clearly marked with exhibiting firm name and booth number. Copies of these documents should be mailed to us in advance. Shipments received without required paperwork will be delivered to your booth without guarantee of piece count. Consistent with trade show industry practices, there may be a lapse of time between the delivery of shipment(s) to your booth and your arrival, and **during such time the materials will be left unattended**. ART CRAFT WILL NOT BE RESPONSIBLE OR LIABLE FOR ANY LOSS, DAMAGE, THEFT, OR DISAPPEARANCE OF EXHIBITOR'S MATERIALS AFTER MATERIALS HAVE BEEN DELIVERED TO EXHIBITOR'S BOOTH AT SHOW SITE. ART CRAFT highly recommends contracting security services from Facility or Show Management. Due to policy changes beyond our control, that have been implemented by any Commercial Freight and Courier Services regarding signatory acceptance/acknowledge of receipt of shipments by Art Craft Display, Inc., Art Craft Display will no longer recognize nor address any claim of receipt of goods purely by proof of signature as provided by these outside Commercial Services. Furthermore, Art Craft Display will not be responsible for any financial claim arising, wholly or in part, from any claim by the Exhibitor (you) or by a Commercial Freight and Courier Service that any shipment was accepted by signature of an Art Craft Display authorized representative and/or by evidence provided solely by the Commercial Freight and Courier Service or by the Exhibitor (you) and when purported shipment is not in possession of Art Craft Display.

5. EMPTY CONTAINERS: Empty container labels are available at our service desk. Affixing labels to the containers is the sole responsibility of EXHIBITOR. All previous labels must be removed or obliterated. ART CRAFT assumes no responsibility for: Error in the above procedures; Removal of containers with old empty labels and without ART CRAFT labels; or improper information on empty labels. ART CRAFT WILL NOT BE LIABLE FOR LOSS OR DAMAGE TO CRATES AND CONTAINERS AND/OR THEIR CONTENTS DUE TO INCLEMENT WEATHER, OR ANY OTHER CAUSE, WHILE SAID ITEMS ARE IN EMPTY CONTAINER STORAGE.

6. OUTBOUND SHIPMENT: All outbound shipments will be sent **COLLECT OR BILLED TO THIRD PARTY BY EXHIBITOR**. Consistent with trade show industry practices, there may be a lapse of time between the completion of packing and the actual pickup of materials from the booths for loading onto a carrier and **during such time the materials will be left unattended**. ART CRAFT WILL NOT BE RESPONSIBLE OR LIABLE FOR ANY LOSS, DAMAGE, THEFT, OR DISAPPEARANCE OF EXHIBITOR'S MATERIALS BEFORE MATERIALS HAVE BEEN PICKED UP FOR RELOADING AT THE CONCLUSION OF THE EVENT. ART CRAFT highly recommends contracting security services from Facility or Show Management. All Outbound Shipping Authorizations submitted to ART CRAFT by EXHIBITOR will be checked at the time of pickup from the booth and corrections will be made where discrepancies exist between the quantities of items listed by EXHIBITOR and the actual count of such items in the booth at the time of pick-up. If the EXHIBITOR designated carrier fails to remove your freight by the final move-out time, your shipments will be rerouted by ART CRAFT at your expense. ART CRAFT reserves the right to **HOLD** outbound freight until payment of all drayage invoices is satisfied.

7. ABANDONED FREIGHT: ART CRAFT will remove only our equipment and items, which are consigned to us per written authorization, by the exhibiting firm(s) and Facility or Show Management (i.e. freight). Any other items left behind by exhibiting firms or Show Management, and not authorized for removal by us, shall be deemed "abandoned", and Facility Management will be notified in writing. Reasonable effort will be made to contact known owners of abandoned items; however, ART CRAFT will not be responsible for any loss, damage, delay, disappearance or liability whatsoever regarding freight deemed abandoned.

8. ART CRAFT'S RESPONSIBILITY: ART CRAFT shall be responsible for only those services provided directly by ART CRAFT. ART CRAFT assumes no responsibility for any persons, parties, or other contracting firm not under ART CRAFT's direct supervision and control. ART CRAFT shall not be responsible for loss, delay, or damage due to strike, lockouts, work stoppages, natural elements, vandalism, acts of God, civil disturbances, power failure, explosion, acts of terrorism or war, other causes beyond ART CRAFT's reasonable control, concealed damage, nor for ordinary wear & tear in the handling of materials.

9. ART CRAFT'S LIMITS OF LIABILITY:

A. CLAIMS FOR LOSS: Claims for loss or damage must be filed within nine (9) months after the delivery of the property, except that claims for failure to make delivery must be filed within nine (9) months after a reasonable time for delivery has lapsed. In no event shall a suit or action be brought against ART CRAFT more than two (2) years and one day from the day when written notice is given by ART CRAFT to EXHIBITOR that the claim is disallowed. Receipt of shipment by consignee or the consignee's agent without written notification of damage or loss will be prima facie evidence that the shipment was delivered in good condition.

1. PAYMENT FOR SERVICES MAY NOT BE WITHHELD: In the event of any dispute between the EXHIBITOR and ART CRAFT relative to any loss, damage, or claim, such EXHIBITOR shall not be entitled to and shall not withhold payment, or any partial payment, due to ART CRAFT for its services, as an offset against the amount of any alleged loss or damage.

2. MAXIMUM RECOVERY: If found liable for any loss, ART CRAFT's sole and exclusive remedy is limited to \$.50 per pound per article with a maximum liability of \$100.00 per item, or \$1,500.00 per shipment, whichever is less. When a declaration is made, liability shall in no event exceed the declared value of the shipment. **DECLARED VALUE AMOUNTS APPLY ONLY TO THE AIR SHIPMENT OF MATERIALS, AND NOT TO ANY OTHER SERVICES PROVIDED BY ART CRAFT INCLUDING, WITHOUT LIMITATION, MATERIAL HANDLING SERVICES.**

3. BREACH OF CONTRACT OR NEGLIGENCE: ART CRAFT's LIABILITY SHALL BE LIMITED TO ANY LOSS OR DAMAGE WHICH RESULTS SOLELY FROM ART CRAFT'S NEGLIGENCE IN THE ACTUAL PHYSICAL HANDLING OF THE ITEMS COMPRISING EXHIBITOR'S SHIPMENT OR WHICH RESULTS FROM BREACH OF CONTRACT AND NOT FOR ANY OTHER TYPE OF LOSS OR DAMAGE. In no event shall ART CRAFT be liable to the EXHIBITOR or to any other party for special, collateral, exemplary, indirect, incidental or consequential damages, whether such damages occur either prior to or subsequent to, or are alleged as a result of tortious conduct, failure of the equipment or services of ART CRAFT or breach of any of the provisions of this agreement regardless of the form of action, whether in contract or in tort, including strict liability and negligence, even if ART CRAFT has been advised or has notice of the possibility of such damages, or for any damages caused by EXHIBITOR'S failure to perform EXHIBITOR'S responsibilities. Such excluded damages include but are not limited to: loss of profits, loss of use or interruption of business, or other consequential or indirect economic loss.

B. DECLARED VALUE: Declared value is available only on AIR SHIPMENT. The value per pound for applying valuation charges shall be determined by dividing the shipper's declared value for carriage by the actual weight of the shipment.

1. GROUND SHIPMENTS: No declared value is available for ground shipments. If the shipper declares a value, they must ship by Air.

2. DOMESTIC & INTERNATIONAL AIR SHIPMENTS: When the shipper declares a value that exceeds \$.50 per pound per article with a maximum liability of \$100.00 per item, or \$1,500.00 per shipment, whichever is greater, an additional charge of \$0.85 per \$100.00 of excess valuation or fraction thereof, subject to a minimum charge of \$3.25 per shipment, will be assessed on the declared value.

3. EXTRAORDINARY VALUE: Notwithstanding the above limitations, all shipments, domestic and international, containing the following items of extraordinary value are limited to a maximum declared value of \$500.00.

- a. Artworks and objects of art, namely original paintings, drawing, etchings, watercolors, tapestries or sculptures.
- b. Clocks, jewelry, including costume jewelry, furs, and fur trimmed clothing.
- c. Personal effect, including without limitation papers and documents.

4. LIABILITY: Liability for damage to shipments containing glass shall be limited to \$50.00. Shipments with a declared value exceeding \$50.00 will not be accepted. If inadvertently accepted, liability will be limited to \$50.00. Glass shipments include, without limitations: windshields, plate glass, ceramics, chinaware and light bulbs.

5. MAXIMUM VALUES: Any declared value in excess of the maximums allowed herein is null and void, and the acceptance by us for carriage of any shipment with a declared value in excess of the allowed maximums does not constitute a waiver of these maximums.

C. INDEMNIFICATION: EXHIBITOR agrees to indemnify, forever hold harmless and defend ART CRAFT from and against any and all demands, claims, causes of action, fines, penalties, damages (including consequential) liabilities, judgments, and expenses (including but not limited to reasonable attorneys' fees and investigation costs) on account of personal injury, death, or damage to or loss of property or profits arising out of, contributed to or by and of the following:

- EXHIBITOR'S negligent supervision of any labor secured through ART CRAFT, or the negligent supervision of such labor by any of EXHIBITOR'S employees, agents, representatives, customers, invitees and/or any exhibitor appointed contractor (EAC).
- EXHIBITOR'S negligence, willful misconduct, or deliberate act, or the negligence, willful misconduct, or deliberate act of EXHIBITOR'S employees, agents, representative, customers, invitees and/or any Exhibitor Appointed Contractor (EAC) at the show or exposition to which this contract relates.
- EXHIBITOR'S violation of Federal, State, County or Local ordinances or the violation of Show or Facility Regulations and/or Rules as published and set forth by Facility and/or Show Management.
- EXHIBITOR'S inclusion of illegal substances, hazardous materials or waste in any shipments placed with ART CRAFT and for the violation of the representations and warranties made regarding hazardous materials within this Agreement.

10. INSURANCE: ART CRAFT is not an insurer nor provides insurance. Insurance for EXHIBITOR materials, shall be obtained by EXHIBITOR in amounts and for perils determined by EXHIBITOR. EXHIBITOR agrees to provide ART CRAFT with a release of subrogation to the extent of any insurance settlement received.

11. COLLECTION: YOU agree to pay all costs of collection by ART CRAFT of any amounts due hereunder, including actual attorney's fees. YOU further agree that, in the event any action arising out of or related to the Agreement between YOU and ART CRAFT, and ART CRAFT prevails, YOU shall pay ART CRAFT its actual attorney's fees and other costs incurred as a result of or in connection with such action. To the extent state law limits the recoverability of attorney's fees, ART CRAFT shall be entitled to recover its fees up to the maximum amount by state law.

12. JURISDICTION: The Agreement is governed by the laws of the state where the ART CRAFT branch pertinent to the transaction is situated. Any action arising out of or related to the Agreement shall be brought, at ART CRAFT's discretion, either in a court with jurisdiction over the county in which the pertinent ART CRAFT branch is situated, in the county in which the project for which the goods are to be used is located, or in a court or before an arbitration panel where an action between ART CRAFT and a third party is pending which concerns the subject matter of the Agreement. To the extent allowed by law, YOU waive your right to a trial by jury in any action brought upon, or by reason of, the Agreement.

13. EXHIBITOR ACCEPTANCE OF ART CRAFT TERMS, CONDITIONS AND POLICIES: EXHIBITOR, as a material part of the consideration to ART CRAFT for equipment rental, provision of labor, material handling and transportation services waives and releases all claims against ART CRAFT, its employees, agents, officers, and directors with respect to all matters for which ART CRAFT has disclaimed liability pursuant to the provisions of this contract. The EXHIBITOR acknowledges that he or she has read this agreement, understands it and agrees to be bound by its terms, and further agrees that it is the complete and exclusive agreement between the parties. The invalidity or enforceability of any provision hereof shall not affect, modify, or impair the validity and enforceability of all other provisions herein.