



DIRECTION TO GO TO GLOWFISH SATHORN

1 Glowfish Sathorn located at Sathorn Thani 2 which is directly linked from BTS Chongnonsri via exit number 2

LOCATION DETAILS

GLOWFISH from BTS Chongnonsri



→ Head for Exit 2



→ Take Exit 2



→ Follow the directions for the Sathorn Thani II tower



→ Down the corridor



→ Take a left



→ Round the corner and straight again



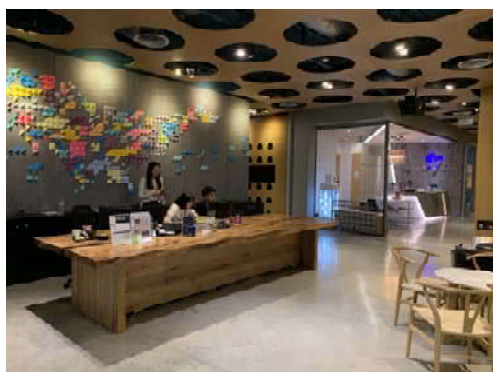
→ Down the steps, GLOWFISH is on your left handside.



3 Drop off at 1st floor



4 Glowfish directory





GLOWFISH SATHORN

2ND FLOOR, SATHORN THANI 2 BUILDING
NORTH SATHORN, SILOM, BANGRAK
BANGKOK 10500



T 02 109 9600
F 02 109 9602



PARKING: SATHORN
THANI TOWER



PARKING @ Sathorn Thani 2 Building

1. Get your parking ticket, turn right, drive up to the C floor.



2. Glowfish's parking area is on the orange floor. Notify the security guard that **GLOWFISH** (if the parking is full, can park in another empty space).



3. Take the elevator to the 2nd floor and walk to Glowfish



2-hour free parking stamp is available at the Glowfish's reception.

SATHORN THANI COMPLEX

รูปเล่มของบัตรที่ใช้คู่ของฟรีได้

มีรถจอดภายในอาคารจอดรถชั้นนี้
ประจําคราวฟรีจน
จน.ถัดไป 40 นาที



XXXXXXXX	XXXXXXXX
XXXXXXXX	XXXXXXXX
XXXXXXXX	XXXXXX
XXXXXXXX	X