



WELCOME TO

Epic Homes

Building relationships
by building homes

“Alone we can do so little, together we can do
so much.” – Helen Keller





OUR
VISION

WHAT WE ASPIRE TO BE

A world full of
Extraordinary People Impacting Communities.

WHAT WE DO

OUR
MISSION

To inspire, mobilise & empower individuals to **live extraordinary lives dedicated to creating positive impact** around them.

OUR METHOD OF CHANGE



OUR FOCUS

THE ORANG ASLI OF PENINSULAR MALAYSIA

The 'Orang Asli' name is a Malay term which transliterates as original peoples or first peoples. The Orang Asli (OA) is the oldest inhabitants of West Malaysia.



210,000¹

ORANG ASLI POPULATION OF ALL ETHNIC GROUPS & SUB-GROUPS IN MALAYSIA



0.6%²

OUT OF 32.7 MILLION POPULATION IN MALAYSIA

20%² classified as hardcore poor compared to 0.1% hard-core poor of national average³

99.2%⁴ are in B40 (household income of ~RM4,000 per month)

References:

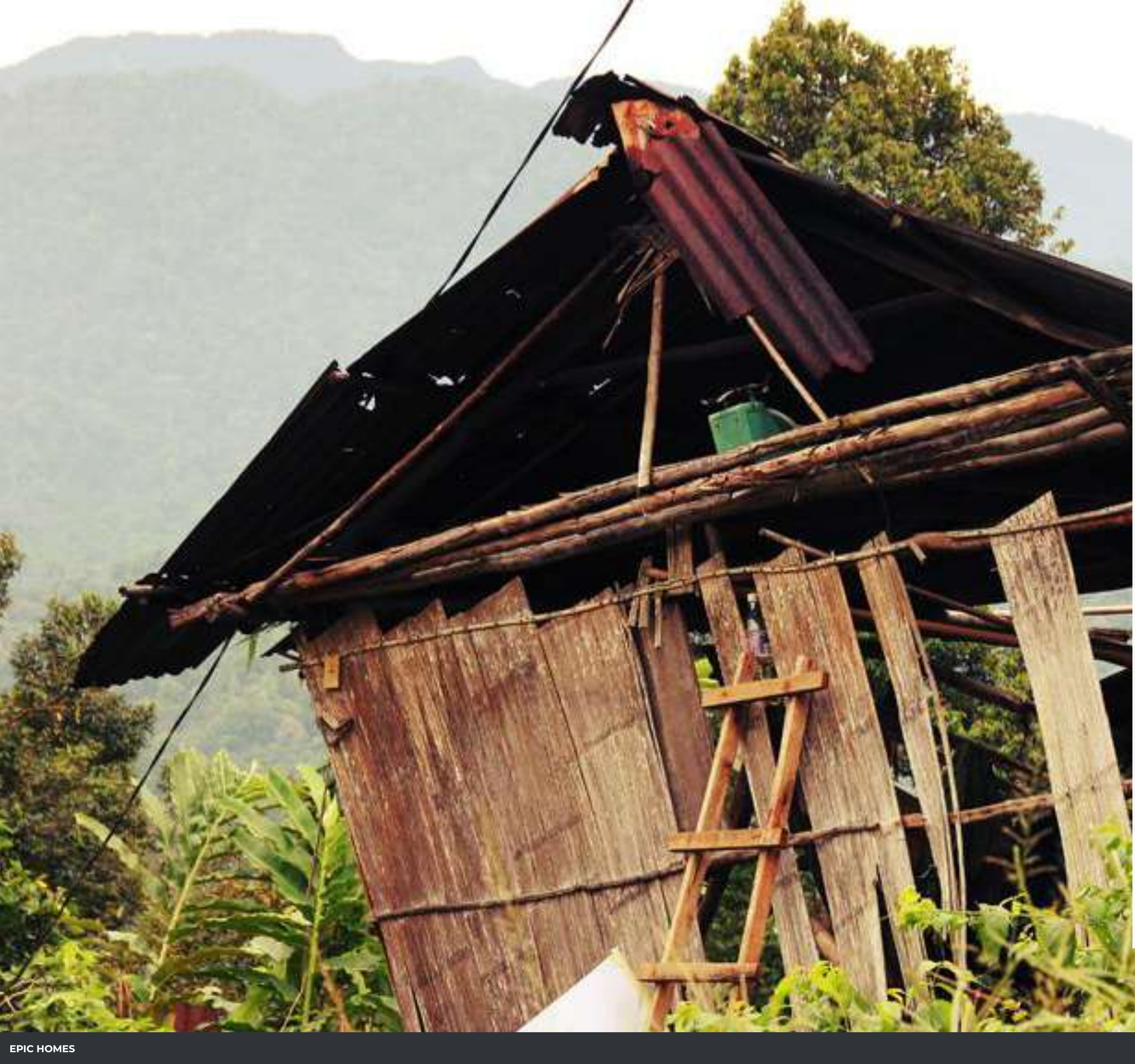
[1] Department of Orang Asli Development (JAKOA), 2022 (<https://www.jakoa.gov.my/orang-asli/jadual-taburan-etnik-orang-asli-mengikut-negeri/>)

[2] Department of Statistics, 2014 (www.data.gov.my)

[3] Economic Planning Unit, 2022

[4] Estimate by Centre for Orang Asli Concerns (COAC), 2021





12,000*

ORANG ASLI FAMILIES LIVE IN UNSAFE HOUSING CONDITIONS

This was Pak Cihong's House. He lived in this condition for 2 years, without proper shelter, one of our basic needs. He was just 1 of 12,000 around Malaysia.

WHAT IS

Epic + Homes?

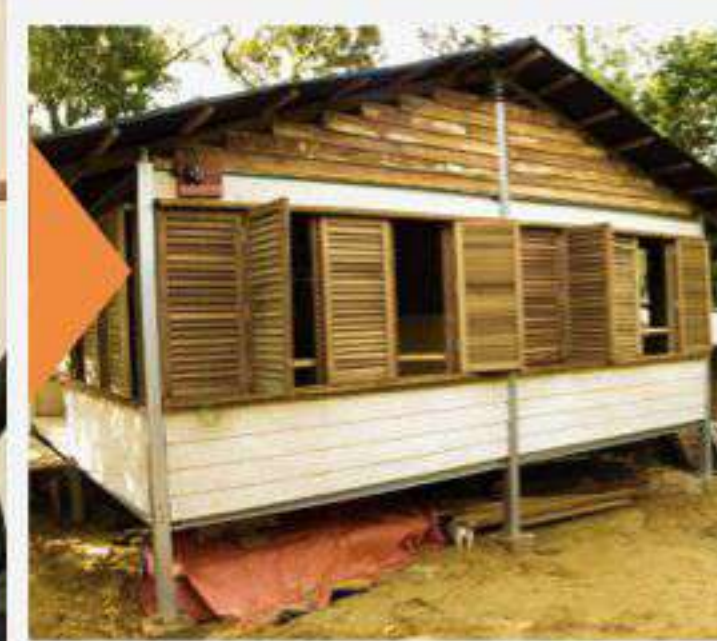
The EPIC Homes movement aims to **build relationships through the act of building homes**, bridging the gap between the rural and urban divide.

This initiative provides a platform for people of different walks of life to engage with one another.





BEFORE



AFTER

>100 SUPPORTERS & SPONSORS

— Terima kasih.

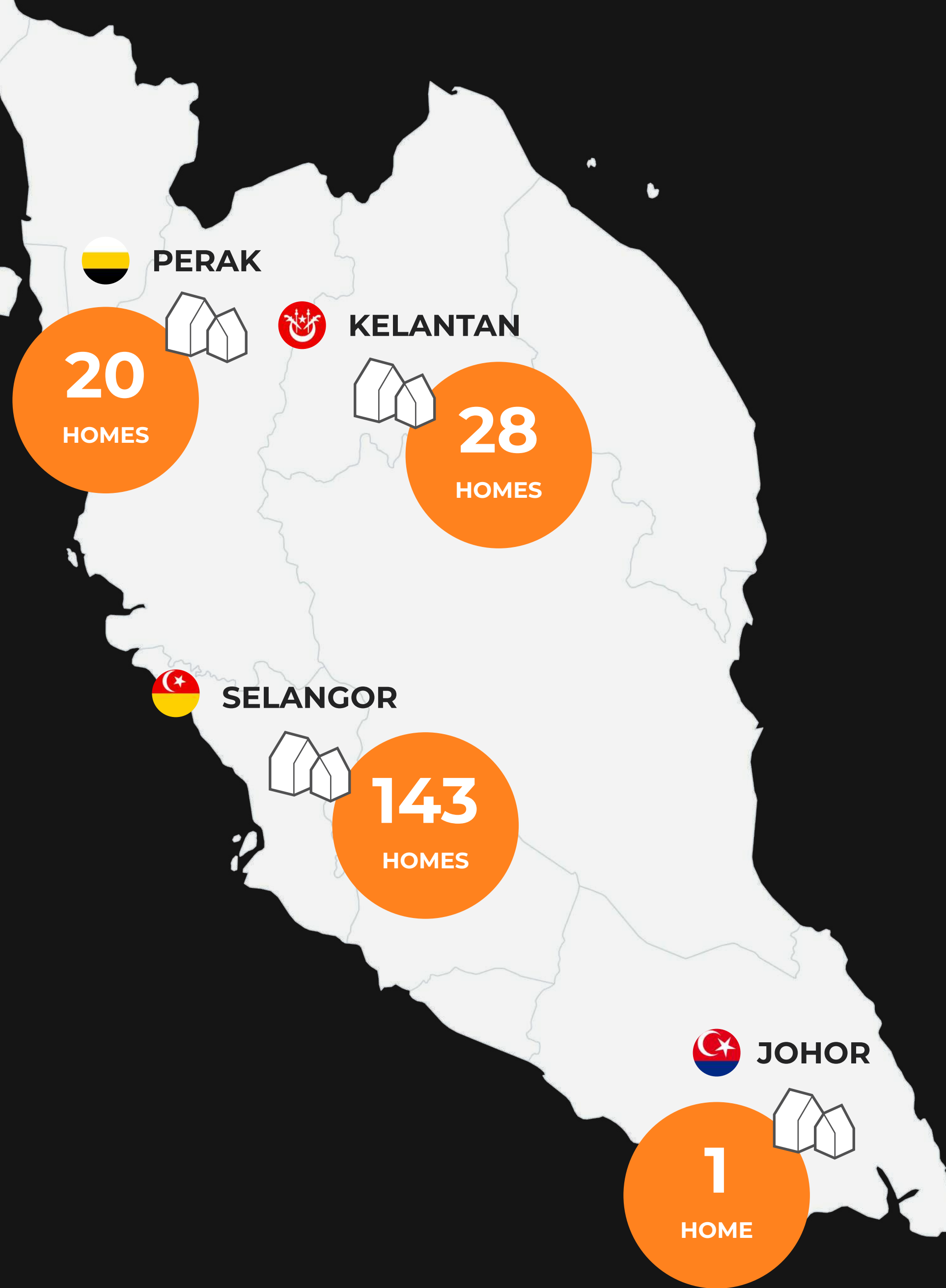


Individual supporters & donors
 Architect's league
 Grace & Bobo
 Legacy 23
 Loy family

Shin, Shao Mei & friends
 Stabbers & friends
 Dr. Chong Fook Loy
 Kenneth Yap & friends

& many more!

IMPACT TO DATE



194

HOMES



16

VILLAGES
BUILT



8,000+


VOLUNTEERS

(BUILDERS, PATHFINDERS ETC.)


Every Home's Outcome

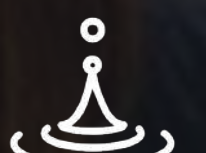
The Epic Homes programme has been designed to tackle different causes that contribute to the issue of housing, relying on volunteers to develop a support network.


LOCAL CHANGE AGENTS


ADDITIONAL RESOURCES FOR LONG-TERM CHANGE

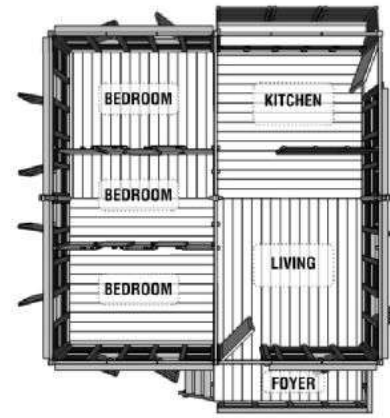
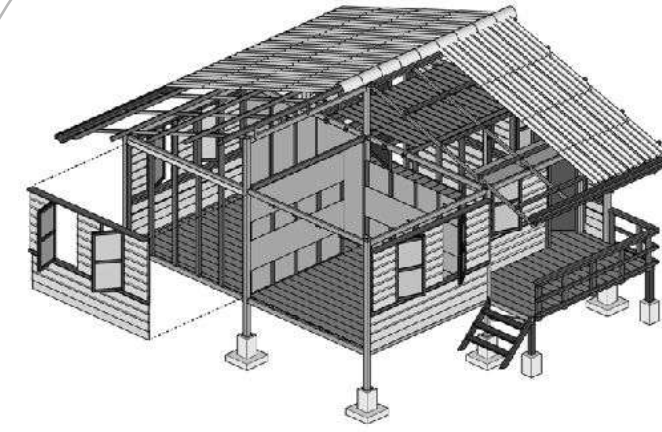



STRENGTH IN SOLIDARITY & COMMUNITY SPIRIT


CHANCE FOR A BRIGHTER FUTURE

The Design

- Modular blocks (110 sqft per module)
- Based on size of family & land
- Based on vernacular architecture, co-designed with qualified architects, engineers & the villagers.



The Materials



CENTRAL STRUCTURE

Steel columns



FLOORING & FRAME

Treated timber



WALL & ROOF

Fibre Cement wall cladding & roof, steel purlins & rafters



FOOTING

Steel piling footing system

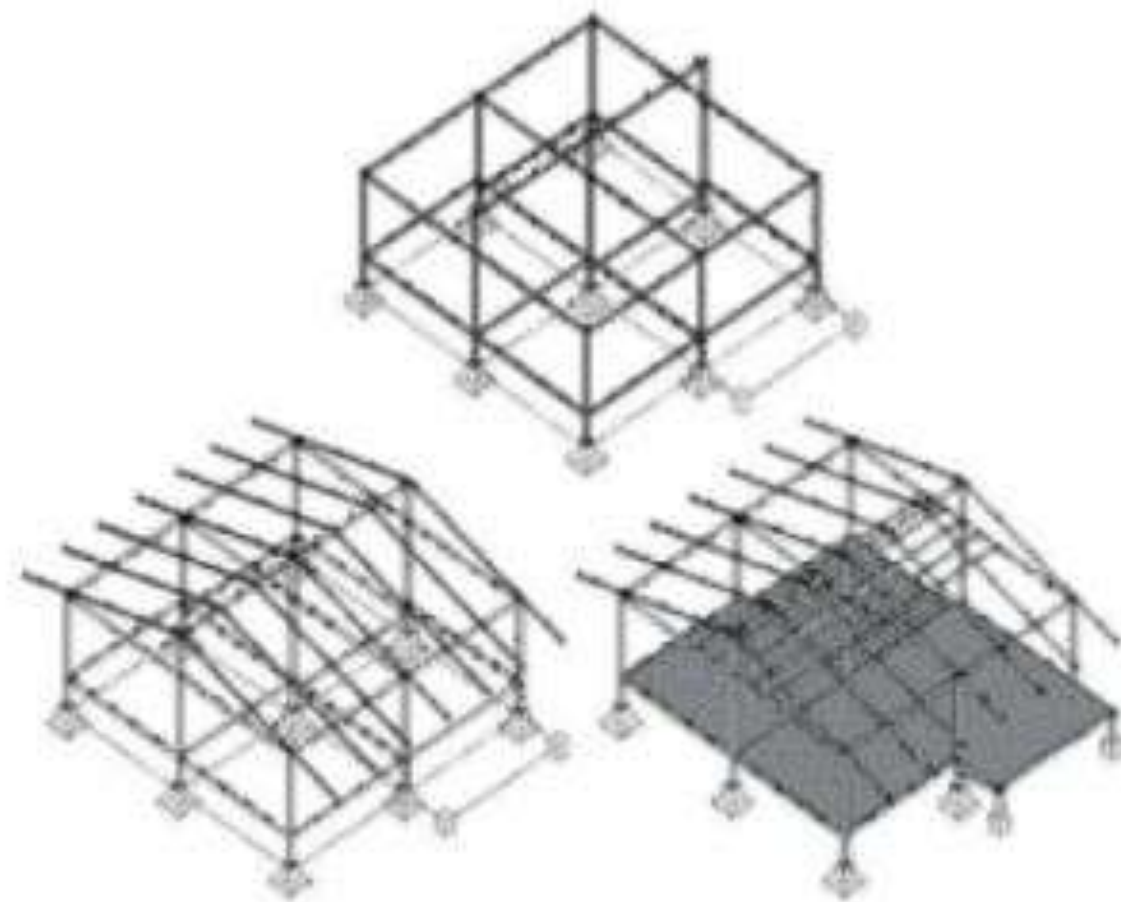
The Build System



DAY 1

DAY 2

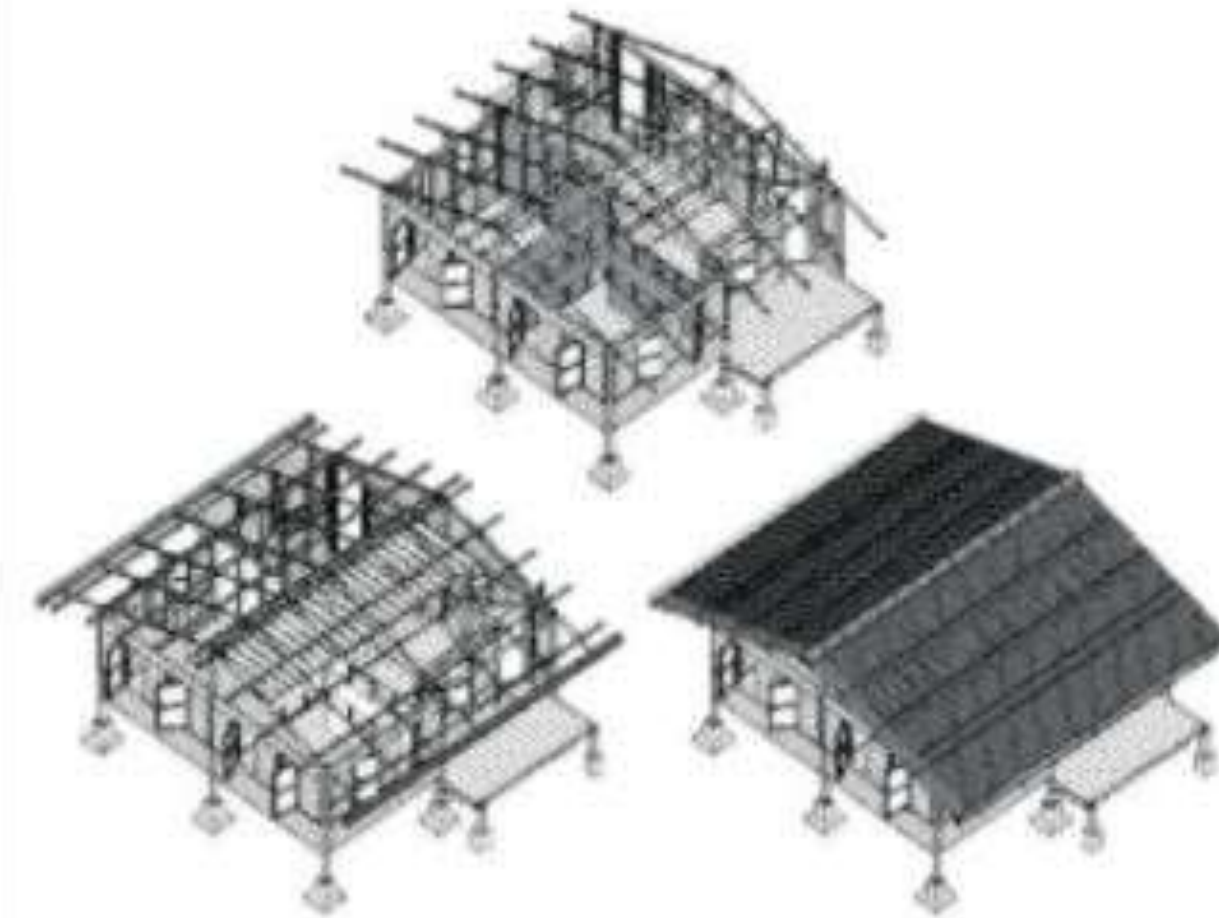
DAY 3



FOOTING, STRUCTURE, FLOORS



WALL FRAMES & WALL PANELS



INTERNAL WALLS & ROOF



HOW THE EPIC HOMES BUILD WORKS

The Volunteer Build

- **30 Participants per build***
- Basic Builder Workshop is required prior to building
 - Builds are led by a trained volunteers who have previous build experience & completed the curated training. They are CIDB certified. They are known as the Core Team members.

The Orang Asli Build

- **7-10 Orang Asli per build***
- The builders are builders trained by Epic via Local Builder Capacity Training Programme
- Builds are led by a trained leaders among the Orang Asli who have previous build experience & completed the curated training.
- This is a paid opportunity for the Orang Asli to gain additional income through the act of building homes.





The Volunteer Build



The Volunteer Build Experience

Experience a once in a lifetime opportunity to build a home for a family in need, over 3 days.

Basic Builder Workshop And Briefing

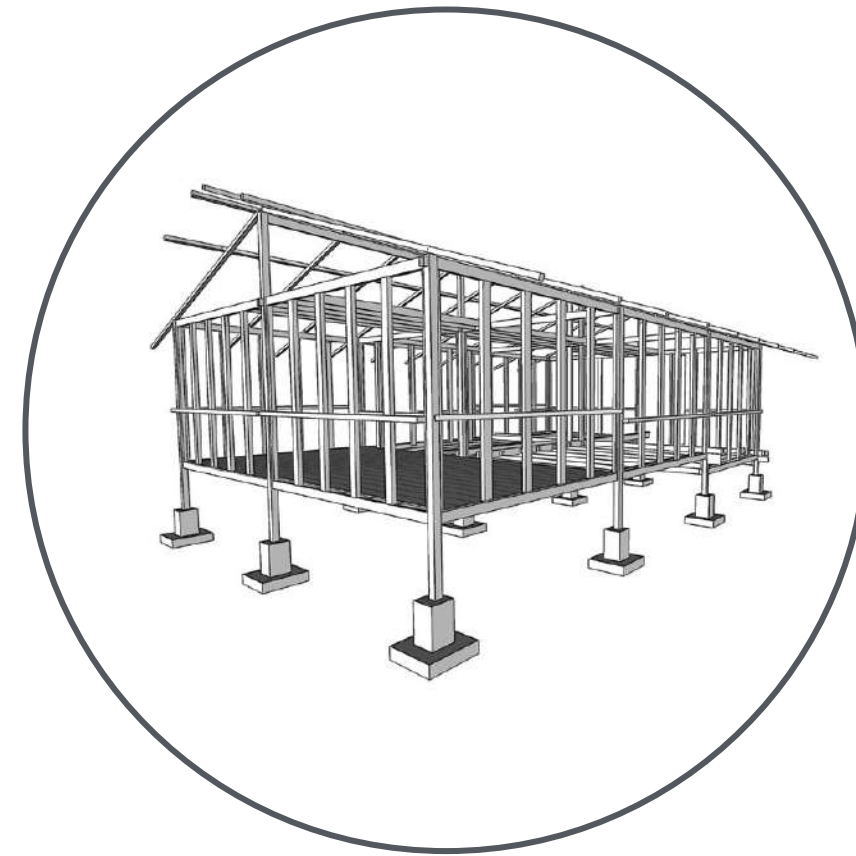


Separate day, typically a week earlier

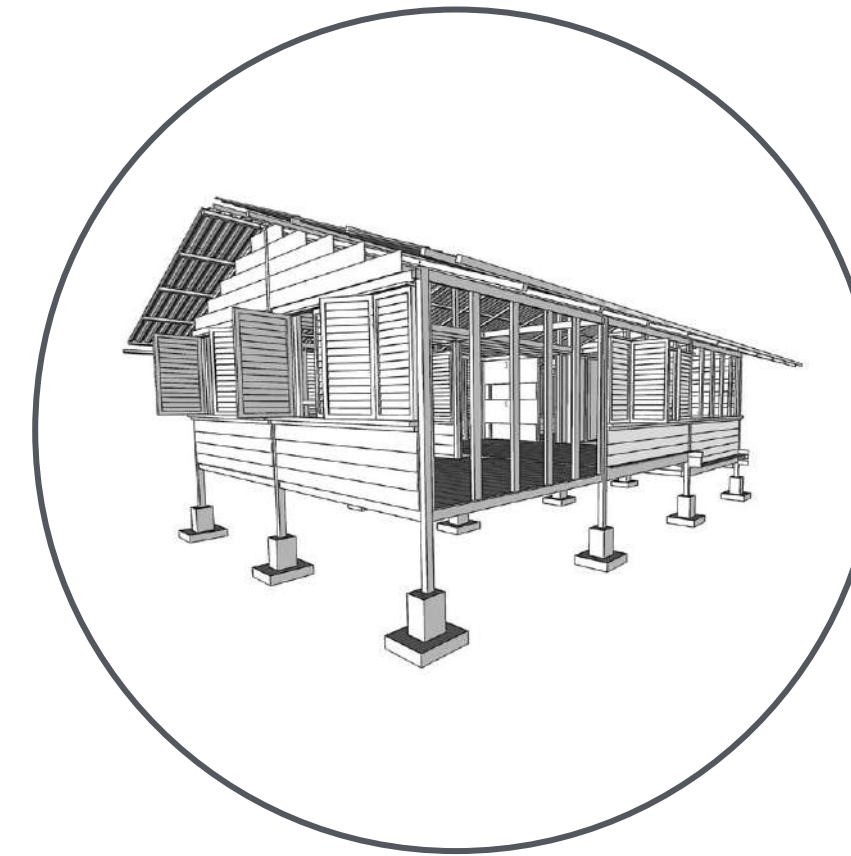
Before building you are required to attend Basic Builder Workshop. This is a challenging hands-on workshop to equip you with the building knowledge and skills to build a home. You'll learn how to use power tools, drilling and sawing, how to properly wield a hammer, different parts we use to build with and top safety tips for building.

3 DAYS 2 NIGHTS

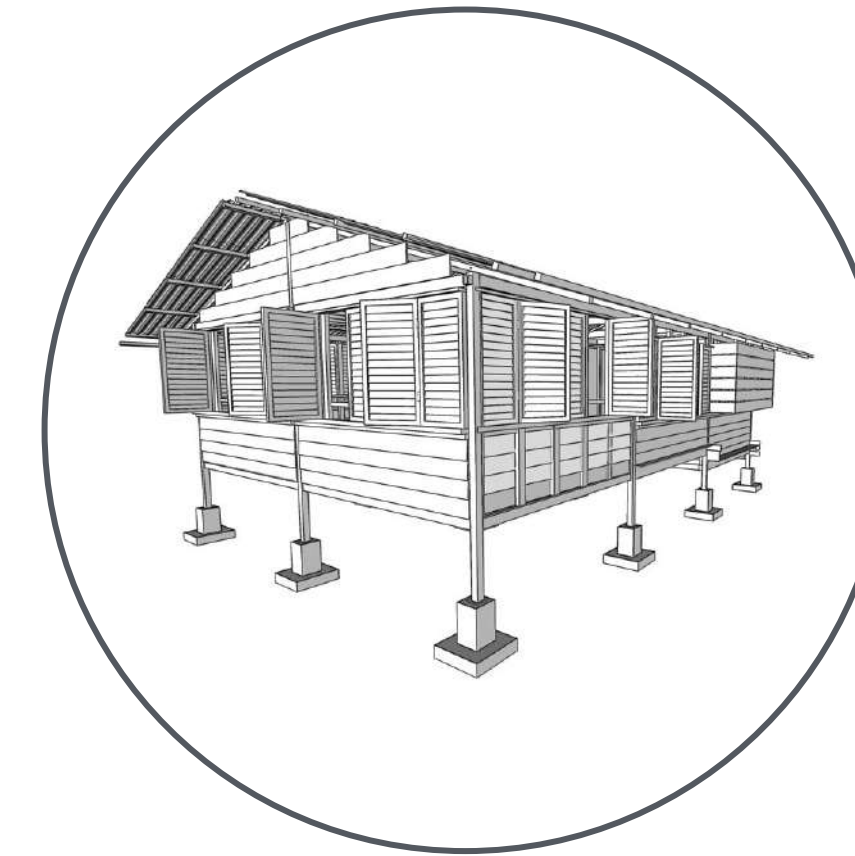
Day One



Day Two



Day Three



Engage in a fun and challenging 3-day build!

Accommodation, transportation, tools, food & beverages will be arranged accordingly. You will be supervised by experienced Core Team members, who will guide and assist teams throughout the entire build.

On day three, you will close and celebrate the build and the most important part of the experience. Realise the impact that you have created and the personal growth you have achieved. Once the home is completed, a representative will install the plaque of recognition and officially hand over the home to the recipient.

Hear what others have to say!



Dr Chua Hong Teck

Former Low Income Households NKRA Director, PEMANDU

"A key aspect of the LIH NKRA is to systematically improve living standards of underprivileged Malaysians by providing supporting infrastructure such as homes, to help them break out of the cycle of poverty."



Stuart Dean

Former CEO, General Electrics

"It builds a lot of positivity"

Aireen Omar

CEO, Air Asia Berhad

"This project is an excellent way to build camaraderie between volunteers and the villagers. We hope to support Epic Homes in other similar projects in future"



Philip Seah

Former CEO, Prudential Assurance Berhad

"It was just a dream partnership coming together. We are so proud to be working with Epic"



Adzhar Ibrahim

People & Organisation Head, Maxis Berhad

"It was an amazing experience to be part of a team doing something that is not only fun and educational, but one that actually made a huge change in someone's life. It shows what creativity and passion can do when blended with energy and enthusiasm,"

How does Epic Homes fulfills ESG

Epic Homes supports Social pillar under ESG in providing an empowered workforce, and advancing communities



EMPOWERED WORKFORCE

Epic Homes provides the platform for the employees to **connect and strengthen team relationships** while building home for families in need, supporting the diversity and inclusion.

Not only that the build experience opens up the opportunity for **employers to engage employees** in a unique volunteering and team building activity.



ADVANCING COMMUNITIES

Building homes with the Orang Asli kick starts a relationship building process that helps us to **understand the community's aspirations while allowing them the dignity to determine their own future.** As the relationship is cultivated, we hope to develop it into a long term support system where ideas and resources can be shared to help actualise their aspirations.

Home Sponsorship Cost

RM60,000
per home*

EVERY HOMES ARE PROTECTED



Every sponsored home will include an Enhanced Fire Insurance Policy (first 3 years)



12-months structural warranty & 6-months architecture warranty

COMMUNITY IDENTIFICATION & DEVELOPMENT
LOGISTICS COSTS (ZONE 1, SUBURBAN AREAS)

4%

4%

TECHNICAL MAINTENANCE & DESIGN

5%

3%

SUPPLY CHAIN

2%

TOOLS & EQUIPMENT

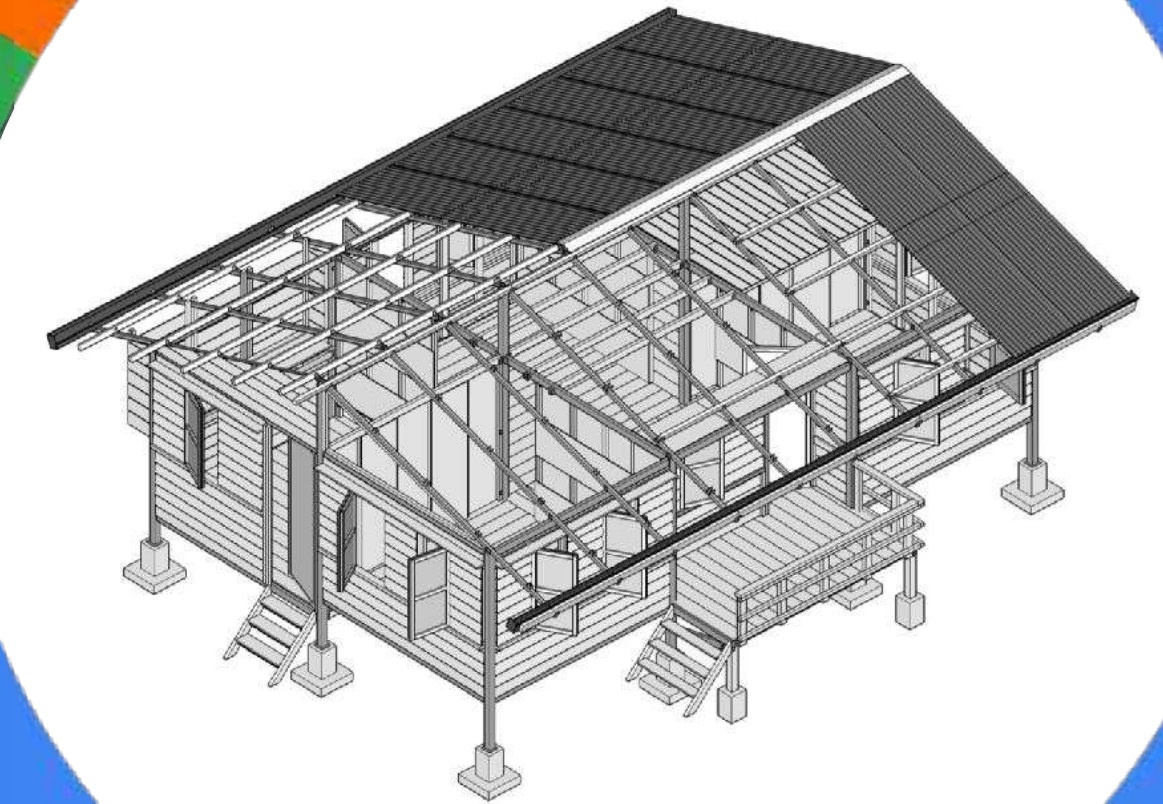
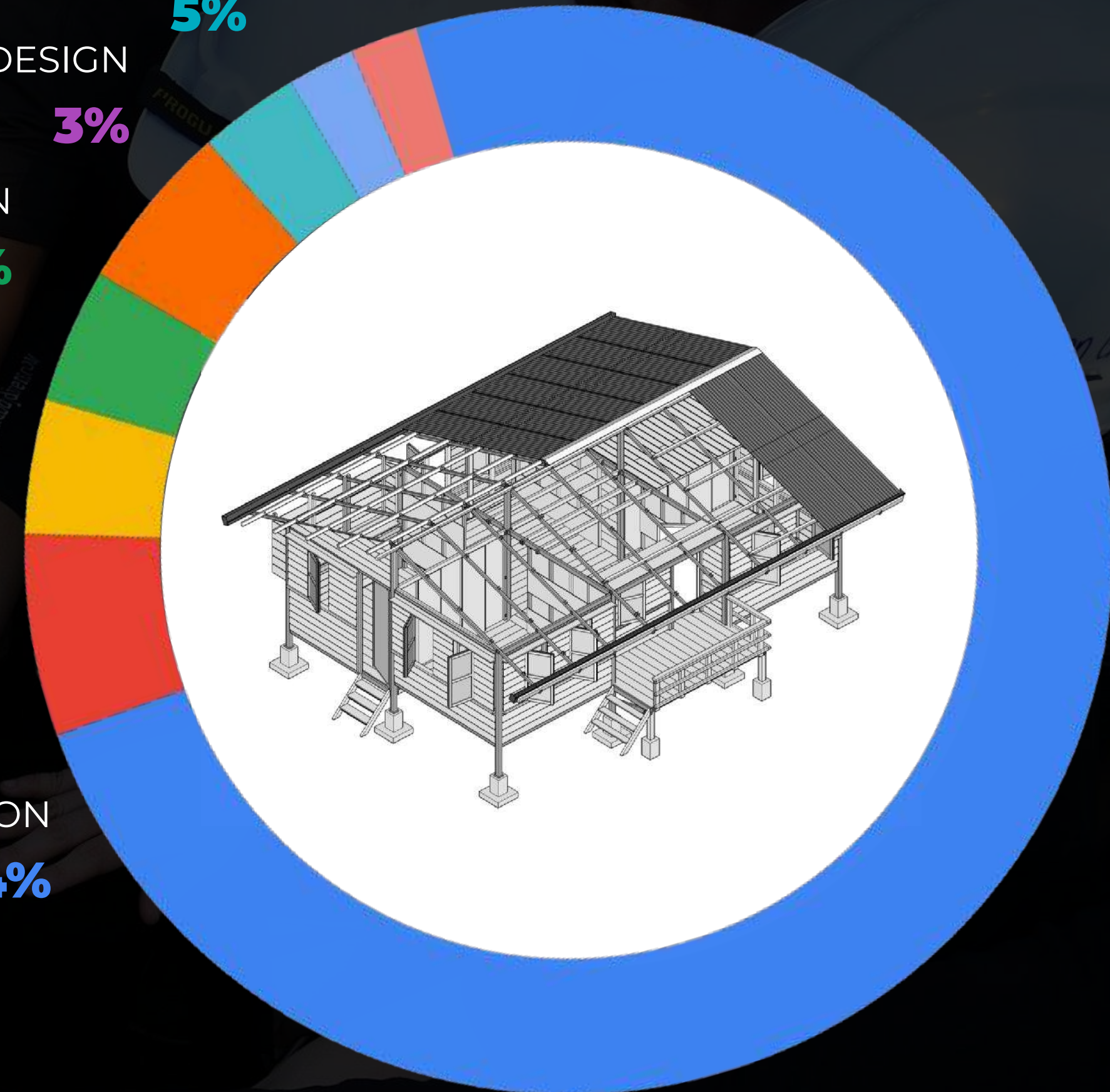
2%

CONSTRUCTION SUPERVISION FEES

6%

CONSTRUCTION MATERIALS & FOUNDATION

74%



** This cost structure applies for homes built in Zone 1 (1 hour away from KL) and a maximum size of 640sqft.
For more remote village locations or home size larger than 640sqft, cost shall vary.

CHOOSE YOUR EPIC HOMES EXPERIENCE



PUBLIC BUILD

Promote a caring society by creating volunteering opportunities for the general public!

+RM0

Epic will organise a build for public volunteers and the volunteers will cover their own build experience and training costs! Customised plaque for the home included!



TEAMBUILDING

Build it with your team in a one-of-a-kind team building experience!

+RM44,000*

Full-board build experience inclusive of training, with dedicated client servicing team ensuring a seamless and worry-free 3 days 2 nights experience for up to 30 pax inclusive of customised T-Shirts with your logo.

***HRDF CLAIMABLE**



ORANG ASLI BUILD

Provide alternative income and upskilling opportunities to the local community!

+RM12,000

Empower local Orang Asli teams by covering various cost for mobilisation and welfare like transportation, meals, construction related PPEs, insurance as well as their daily allowance.



WE ARE
TAX-EXEMPTED!

Epic Society is a tax-exempted organization by the Malaysia Inland Revenue Board under subsection 44(6) Income Tax Act 1967.

Reference No: LHDN.01/35/42/51/179-6/8502

Validity Period: 1 April 2021 - 31 March 2026

Terms and conditions applied

Terima Kasih! Thank You!

FOR COLLABORATION OPPORTUNITIES

Wan Munirah Wan Mohamad
Lead, Strategic Partnership
munirah@epic.my
+6 012 9393 622

