

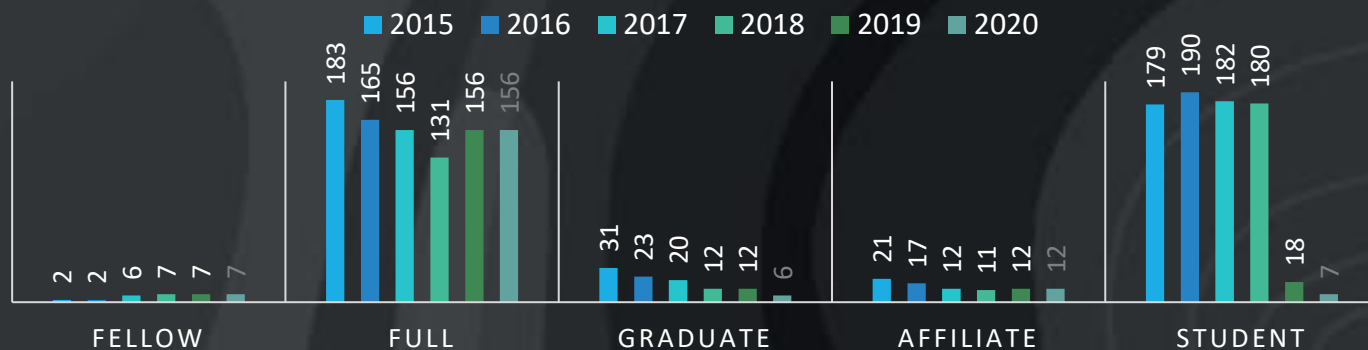


# **PRESIDENT'S REPORT YEAR 2020**

# SILA MEMBERSHIP STATUS

Membership Type	2015	2016	2017	2018	2019	2020
Fellow	2	2	6	7	7	7
Full	183	165	156	131	156	156
Graduate	31	23	20	12	12	6
Affiliate	21	17	12	11	12	12
Student	179	190	182	180	18	7
<b>TOTAL</b>	<b><u>416</u></b>	<b><u>397</u></b>	<b><u>375</u></b>	<b><u>341</u></b>	<b><u>202</u></b>	<b><u>188</u></b>

	2015	2016	2017	2018	2019	2020
Recognised Practice	30	29	29	25	26	26
Corporate Affiliate	-	-	-	-	1	1



# SILA'S CONTINUED INVOLVEMENT & CONTRIBUTION

**Future Economy Council  
(FEC)  
Built Environment (BE)  
Cluster  
Sub-Committee**

**Landscape  
Working Committee  
for Industry  
Transformation Map (ITM)**

**PUB ABC Waters  
Professionals  
Monitoring Committee &  
Programme Committee**

**Landscape Sector  
Coordination Team  
(SCT) committee**

**UNESCO  
World Heritage Site  
Management  
Committee**

**International Federation  
of Landscape Architects  
(IFLA)**

**Design Singapore  
Council (DSG)  
Industry Association**

**NTUC  
UAssociates**

**SGBC  
Landscape  
Tech. Comm.**

**Workplace Safety  
& Health Council**

**NParks  
workgroup  
for BIM**

**DesignAsia**

SILA is currently represented at various committees, think-tanks, workgroups etc., continuing our commitment to international and national level development and strategic initiatives.



# Strategic Pillars

# 4 Strategic Pillars

**Dream 2021: "To inspire and lead the creation of sustainable urban landscapes"**

## 1. Leadership in Design

Create and promote the integration of urban environments and complex natural systems through responsible, innovative and resilient designs

- *Design focus*

## 2. Elevating Awareness

Elevate the perception and value of Landscape Architects to the government, built environment professionals and the public through effective communication

- *Outreach focus*

## 3. Training & Development

Inspire established and aspiring Landscape Architects to grow talent base through effective academic programmes, capability development and mentoring

- *Talent focus*

## 4. Professional Practice

Educate and develop Landscape Architects' professional practices

- *Practice focus*

# SILA STRATEGIC PILLARS

## 1. Leadership in design

- 2. Elevating awareness
- 3. Training & development
- 4. Professional practice

# STRATEGIC PILLAR #1: LEADERSHIP IN DESIGN

Create and promote the integration of urban environments and complex natural systems through responsible, innovative and resilient designs

Pillar Lead : **Sri, Damian**

Team members: **Audrey, Kenya, Sheila**

## INITIATIVE #1:

Establish incentives with clear criteria to encourage Landscape Architects to come up with more responsible, innovative and resilient designs (e.g., Nparks Awards, SILA SLAA Awards, DBCS Awards, etc.)

## INITIATIVE #2:

Create storytelling platform(s) promoting responsible, innovative, and resilient designs to lead in the profession and in the built environment sector globally (e.g., testimonials, publications, etc.)

## INITIATIVE #3:

Establish a knowledge repository creating new designs (success stories, design methodologies, etc.) for Landscape Architects and other built environment professionals to inspire innovation

## INITIATIVE #4:

Assemble a 'knowledge-gathering' team to keep Landscape Architects in the loop on responsible, innovative and/or resilient designs from other parts of the world and trends and breakthroughs from other industries to use as inspiration for #3: Establish a knowledge repository creating new designs



## INITIATIVE #1:

Establish incentives with clear criteria to encourage Landscape Architects to come up with more responsible, innovative and resilient designs (e.g., NParks Awards, SILA SLAA Awards, DBCS Awards, etc.)

# SINGAPORE LANDSCAPE ARCHITECTURE AWARDS 2022



- Moved to 2022 to give us more time and opportunity for organizing a meaningful event.
- Combine the awards evening with a half-day seminar event with panel discussions, keynote lecture, and workshop.

## ACTION STEPS

1. Form a team to discuss what criteria should be used in evaluating whether a design is 'responsible, innovative and resilient'.
2. Create criteria to evaluate 'responsible, innovative and resilient' designs.

Invite volunteers to join the organizing team for the awards event!!!



## INITIATIVE #2:

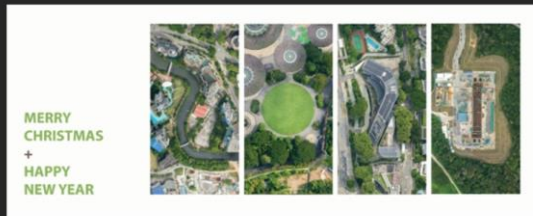
Create storytelling platform(s) promoting responsible, innovative, and resilient designs to lead in the profession and in the built environment sector globally (e.g., testimonials, publications, etc.)

### Quarterly Newsletter by SILA

<https://www.sila.org.sg/news>

### PROJECT TEAM

Sri, Audrey, Anna, Yurong



#### Opening Message

Dear Gopalakrishnan,

We are fast approaching the end of one of the most eventful and tough years. We have been plunged into many of the challenges posed by Covid-19, which has drastically affected our economy. These are felt at the individual and community level, as well as collectively, as a profession.

#### Sea Level Rise

The threat of sea-level rise has permeated the globe, and cities are trying to redress the balance. Adapting to rising sea-levels requires constant evaluation of protective systems and will remain a work in progress for centuries to come.



But here are some of the ways Landscape Architects from all over the world are taking the necessary steps toward creating a more sustainable future for generations to come. Check out some of these inspiring projects that are striving to make a difference.

[Read More](#)

#### Balance Your Way Through An Adventure | Kompan Design Studio



Balance your way through an adventure! Learn all about how Kompan Design Studio's commitment to combining both art and play, led to the creation of one of the most innovative spaces and key features of Singapore's award-winning Jewel Chang Airport.

[Learn more about this creative space here!](#)

[Read More](#)

#### HDB: Call for Ideas 2020!

The past year has demonstrated that our urban design considerations did not account for a pandemic situation. This call for ideas seeks new and innovative solutions to create safer urban spaces that are compatible with a high-density urban population. The goal is to ultimately enhance both the physical and mental well-being of residents as we approach a new normal post-pandemic.



#### Leading Singaporean Landscape Architects Declare Climate And Biodiversity Emergency



Even as Singapore continues to work towards becoming a "City in Nature", the little red dot is definitely still not immune to the impacts of climate change and the loss of biodiversity. Singaporean Landscape Architects have dubbed these twin crises as the "most serious issues of our time", and are calling for collective action to address the growing problem.

Here's what you can do to help.

#### LAWB's A Conversation With: SILA's Anna Yap



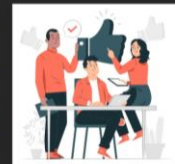
"COVID-19 came quite suddenly, forcing us to change our habits in a very short period and

#### SILA Community: Looking For Newsletter Content Contributors

We are seeking to publish **more original stories** on the **Landscape Architectural industry** for our forthcoming newsletters, and to share this with the SILA community.

We'd like to encourage our **Members, Accredited Landscape Architects and Recognised Practices** to share your stories, activities, projects and achievements with us, in order to benefit the industry and our community. If you have an interest please contact us and we consider your content also for **SILA social media**.

Let's build a wider and **stronger SILA community**. Reach out to us at [secretariat@silasg.org.sg](mailto:secretariat@silasg.org.sg). Thank you in advance for your contribution.



SINGAPORE  
INSTITUTE  
OF  
LANDSCAPE  
ARCHITECTS

**silasg**

## INITIATIVE #3:

Establish a knowledge repository creating new designs (success stories, design methodologies, etc.) for Landscape Architects and other built environment professionals to inspire innovation



secretan98 • Dec 22, 2020 • 3 min read

### Presenting: SILA Edge!

Updated: Dec 23, 2020



### SILA Edge published with SILA newsletter on 22 Dec 2020

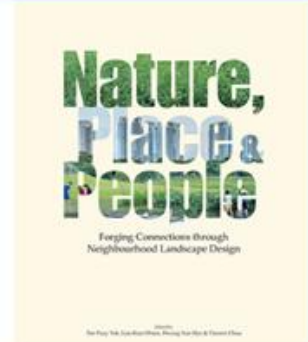
[https://www.sila.org.sg/post/presenting-sila-edge/?fbclid=IwAR1aV\\_kEBYU1U2KNA1M1VUPaKETAASJ84y7n3WhS8mkWtGgaoYxcQB\\_qvnters](https://www.sila.org.sg/post/presenting-sila-edge/?fbclid=IwAR1aV_kEBYU1U2KNA1M1VUPaKETAASJ84y7n3WhS8mkWtGgaoYxcQB_qvnters)

As part of SILA quarterly Newsletter, we are starting a new section called the Edge which aims to share with our member the latest research findings in areas relevant to the landscape architecture profession. We will try to review the research paper and publication in a succinct manner and highlight how the science could influence design process and decisions.

Some of the research topics in our radar include nature-based solutions, ecosystem services, performance-based design, and digital landscape. We welcome contributions both in the form of reviews and suggestions of research papers and publications.

### First review is on the publication of *Nature, Place & People*

The first review is on the publication *Nature, Place & People Forging Connections through Neighbourhood Landscape Design*. The book, published in 2018, was a product of a three-year long research undertaken by the National University of Singapore (NUS) in collaboration with the Housing & Development Board (HDB). It examines the neighbourhood landscapes, provides design principles and guidelines to ensure neighbourhood landscapes are optimally designed to support a range of landscape services such as managing stormwater runoff, enhancing outdoor comfort, and offering recreational opportunities.



Neighbourhood landscapes it is a key component of the built environment and taken together they occupy substantial space in cities. In Singapore, neighbourhood landscapes in residential estates account for almost a tenth of total vegetation cover, more than twice that contributed by parks. By virtue of their large cumulative land uptake, the natural processes in these landscapes have the potential to change the ecological and urban climatic conditions of neighbourhood. It provides an immediate and convenient form of nature experienced by urban dwellers on a daily basis, as well as a common space where community activities and social interaction take place.



SINGAPORE  
INSTITUTE  
OF  
LANDSCAPE  
ARCHITECTS



## INITIATIVE #4:

Assemble a 'knowledge-gathering' team to keep Landscape Architects in the loop on responsible, innovative and/or resilient designs from other parts of the world and trends and breakthroughs from other industries to use as inspiration for #3 (Establish a knowledge repository creating new designs)

### PROJECT TEAM:

Sri; Kenya, Audrey, Damian

### PROJECT ACTIONS:

Phase 1 : Initiate and mobilize, ideation and experiment

Phase 2: Outreach and finalize, spread and advocate

## 3D VISUALIZATION, AR, VR AND BIM

- Leveraging on emerging technologies into the field of landscape architecture
- Exploring the possibilities through collaborations between academics and practice
- **Sharing, and exchanging knowledge, feedbacks.**



WIP study on visualizing the "unbuilt" through smartphones (Kenya Endo)



## INITIATIVE #4:

Assemble a 'knowledge-gathering' team to keep Landscape Architects in the loop on responsible, innovative and/or resilient designs from other parts of the world and trends and breakthroughs from other industries to use as inspiration for #3 (Establish a knowledge repository creating new designs)

### 3D VISUALIZATION, AR, VR AND BIM

**Key Direction:** Leveraging on emerging technologies in 3D visualization, AR, VR and BIM into the field of landscape education and practice.

-Virtual site visits with immersive experience (2020 Q4-)



(Left) Virtual Exhibition (NUS MLA program 10 years anniversary, VR-exhibition, 2020 Oct)

(Right) Virtual Site Visit /w 360° Camera (featuring ABC projects. Understanding Risk 2020. WB, PUB & NUS, 2020 Dec)

## INITIATIVE #4:

Assemble a 'knowledge-gathering' team to keep Landscape Architects in the loop on responsible, innovative and/or resilient designs from other parts of the world and trends and breakthroughs from other industries to use as inspiration for #3 (Establish a knowledge repository creating new designs)

### 3D VISUALIZATION, AR, VR AND BIM

**Key Direction:** Leveraging on emerging technologies in 3D visualization, AR, VR and BIM into the field of landscape education and practice. Some initiatives that are WIP / in the phase of brainstorming;

- Design presentation using AR (2021 Q2-)
- Visualizing the “hidden”, “unbuilt” (2021 Q2-)

You can show your design in-relation to the context.

Conventional style



### Expected outcome:

Learnings and outcomes of the experiment will be the source for new design approach and representation in both academia and practice. A newsletter serves as a platform to share the results with the LA community.

SINGAPORE  
INSTITUTE  
OF  
LANDSCAPE  
ARCHITECTS



# SILA STRATEGIC PILLARS

1. Leadership in design

**2. Elevating awareness**

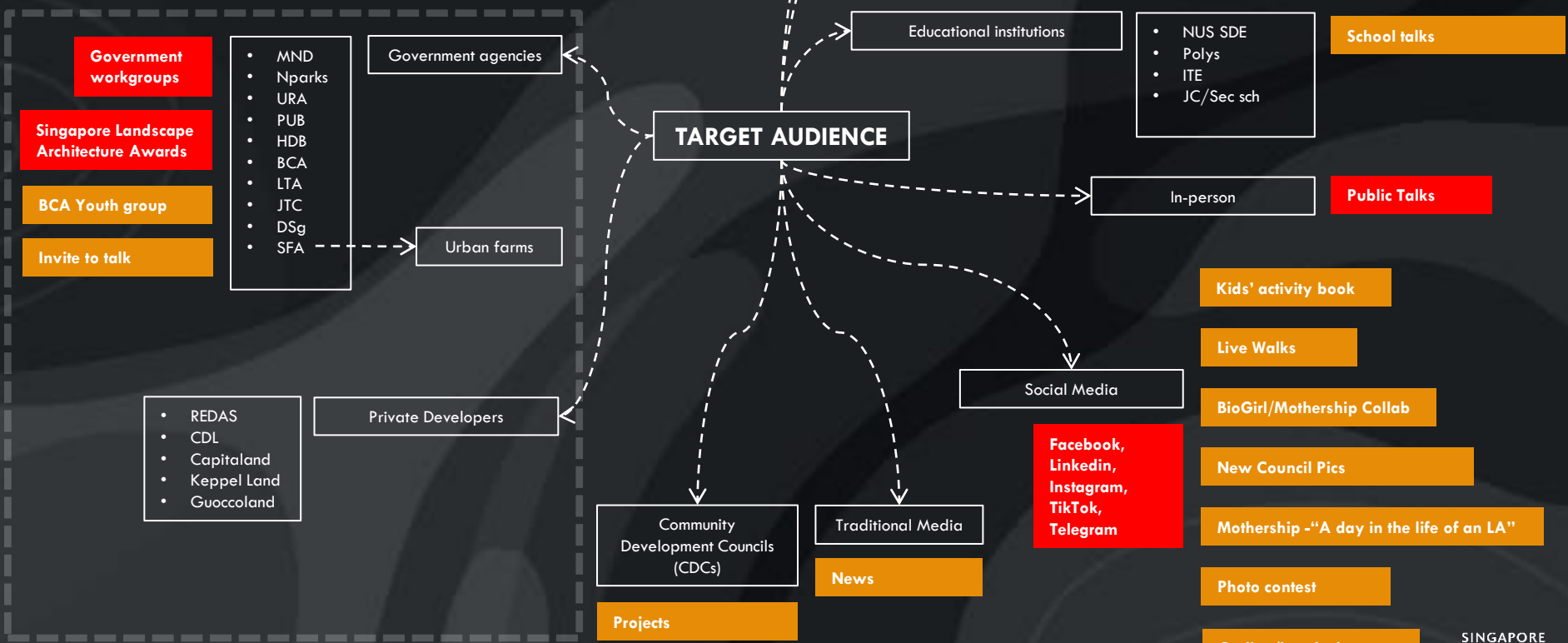
3. Training & development

4. Professional practice



# SILA Elevating Awareness Pillar

- Levels of Awareness (depth of understanding)
- Outreach (breadth)
- Prioritize (strategic vs tactical)
- Capitalizing on existing efforts by others (guerrilla marketing)



**Committee Members:**  
Derek Loei, Ronnie Tan, Anna Yap, Jeverss Choo, Terence Tan, Herbert Julius Montevirgen, Pearlyn Chang, Ashley Sun, Victor Kuan, Pang Yurong, Crystal Cheng



# SILA STRATEGIC PILLARS

1. Leadership in design

2. Elevating awareness

**3. Training & development**

4. Professional practice

# TRAINING & DEVELOPMENT PILLAR

PROPOSED SILA T&D STRUCTURED PROGRAMME SCHEDULE 2021													
	JAN	FEB	MAR (SILA AGM)	APR	MAY	JUN	JUL	AUG	SEP	OCT	NOV	DEC	
Masterclass UAssociates (law, finance etc.)													3 x yearly
SILA Professional Practice Sharing								Sharing on co. start up		Lead consultant sharing			Half yearly
Collaborator Sharing				Nparks CEO Sharing						Proposed Dr. Cheong Sharing			2 x yearly
Cross Design Profession Sharing											ABCWP certification		Once a year
LA Accred Course						By Pro. Prac. Pillar							Once a year
Technical tours													World LA Month (WLAM)
Overseas study trip													Biennial alternate with SLAA
Overseas community project													Biennial. SLAA year
LA Future's LA Friday													Quarterly by LA Future
Plant-A-Tree													World LA Month (WLAM)
Supplier roadshow													Half yearly

## Committee Members:

Fumiko Sano, Ronnie Tan, Alfred Lee, Yu Wen Kwan, Jiang Chan Chan, Emily Lim

# SILA STRATEGIC PILLARS

1. Leadership in design
2. Elevating awareness
3. Learning & development
- 4. Professional practice**

# PROFESSIONAL PRACTICES PILLAR

## Committee Members:

Yvonne Tan, Emily Lim, Stephen Caffyn and Simon Morrison

### LA Accreditation

#### Sub-Committee Members:

Fumiko Sano, Emily Lim,  
Koh Jiann Bin, Jason Wright,  
Nicholaus Lee and Melissa Yip

### ABCWP

#### Sub-Committee Members 2021:

Yvonne Tan, Koh Jiann Bin,  
Tay Kwang Liang

## Up-coming Updates:

- 1) LA Accreditation Handbook Second Edition will be complete by Jun 2021.
- 2) Planning for Accreditation Exams Class (target to launch in Jan 2022)
- 3) Planning for Accreditation Exams Reference Book (target to launch in Jun 2022)

# PROFESSIONAL PRACTICES PILLAR

**Expert Panel (renewed term AGM 2021 to AGM 2023):**

Henry Steed and Peter Bridgewater

**Expert Panel (new term: AGM 2021 to AGM 2023):**



After contributing in the private sector for years, today Ms Tay Bee Choo has accumulated 27 years of experience as a Landscape Architect in HDB. Bee Choo has been a green and blue advocate for people in public housing estates. She strives to create gardens and open spaces where people can be close to nature; and pioneered rain gardens establishment in public housing estate. Known to multiple government agencies, Bee Choo's career thrives on creating win-win situations for all and achieving her green and blue aspirations for Singapore.



# PROFESSIONAL PRACTICES PILLAR

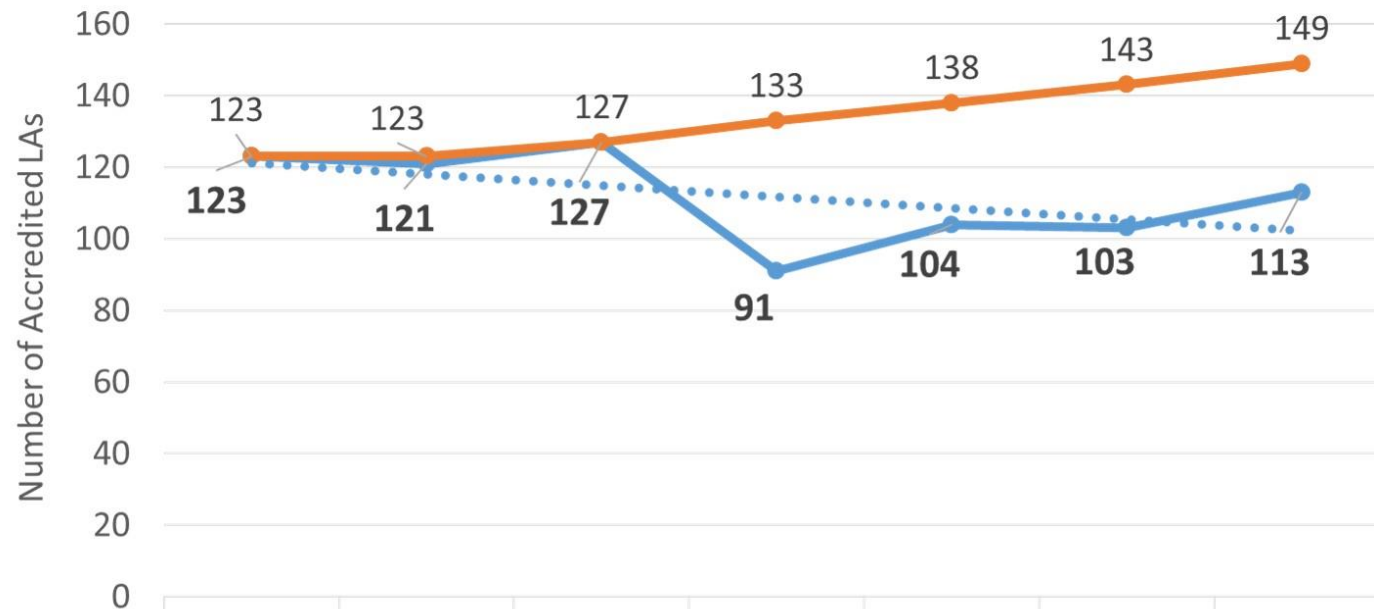
## Other updates for LA Accreditation:

- 1) In 2019, Accr. LAs gained traction in project bidding in government agencies and competitions. In 2020, increasing recognition of Accr. LAs in general.
- 2) Lapsed Accr. LAs must apply to take Accreditation Exams and pass to be reinstated. All renewed Accr. LA updated in LA Accreditation Registry in website: <https://www.la-accreditation.org.sg/>. Website also includes CPD for Renewal / CPD Events List 2021, no e-blasts for CPD events activated in 2020.
- 3) Every Oct, LA Accreditation Renewal will be emailed to all by SILA Secretariat to renew CPD Points using online form, pay and declare adherence to Code of Conduct. 2020 Accreditation Renewals completed on 8 Feb 2021.
- 4) In response to Covid19 cancellation of CPD events in 2020, all Accredited LAs to accumulate 20 CPD in 2 years (2020 and 2021) to be renewed in Dec 2022.
- 5) In 2019, SILA announced during AGM that all RPs need one Director to be an Accredited LA. All RPs who do not have a Director who is Accredited are given 5 years to achieve this milestone (ie. By 2025, all RPs must complete process). All RPs are encouraged to respond to SILA secretariat on this matter soonest possible.

# PROFESSIONAL PRACTICES PILLAR

Trends and Comparison in 6 years for LA Accreditation:

## Current Trends of LA Accreditation 2021



**Extrapolated Figures:**  
 based on start number  
 123 + annual candidates  
 who pass exams  
 2016: 4 passed  
 2017: 6 passed  
 2018: 5 passed  
 2019: 5 passed  
**2020: 6 passed**

— Actual Figures

— Extrapolated Figures

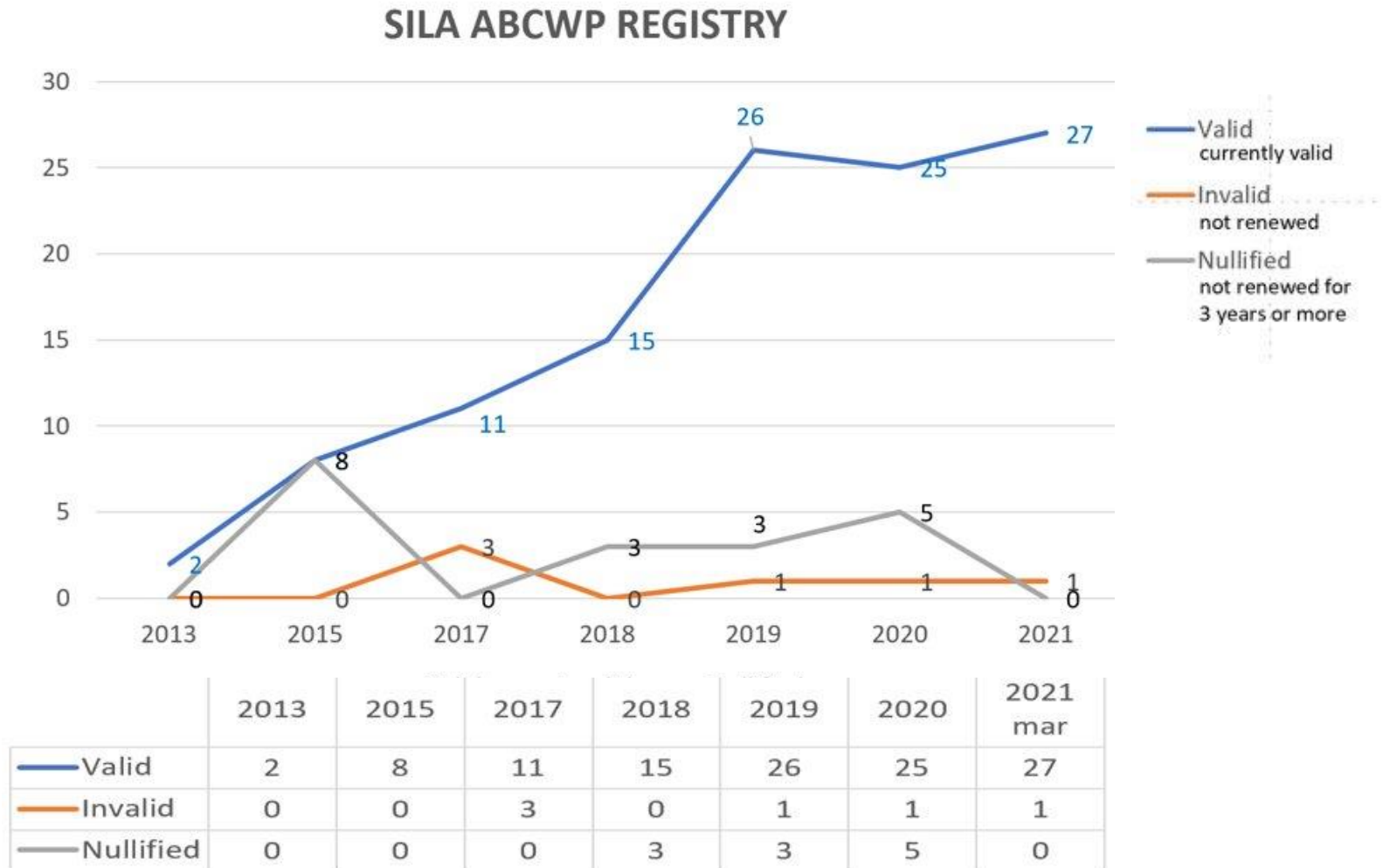
... Linear (Actual Figures)

## Acknowledgements:

- to all Accr. LAs who renewed on time
- to SILA Secretariat's timely updates and follow-ups

# PROFESSIONAL PRACTICES PILLAR

Updated Numbers of ABC Water Professionals with SILA registry:



SILA representation in ABCWP Monitoring Committee and ABCWP Programme Committee



# **RECOGNITION OF NEW ACCREDITED LANDSCAPE ARCHITECTS**

# CONGRATURATIONS!

## NEW ACCREDITED LANDSCAPE ARCHITECTS WHO PASSED 2020 EXAM



Dr Abdul Rahim Bin  
Abdul Hamid



Ms Fu Maoying,  
Claire



Ms Joyce Tey  
Hui Mien



Ms Karen Tham

From left to right:

1. Dr Abdul Rahim Bin Abdul Hamid
2. Ms Fu Maoying, Claire
3. Ms Joyce Tey Hui Mien
4. Ms Karen Tham
5. Ms Nur Syuhada Limat
6. Ms Pang Yu Rong



Ms Nur Syuhada  
Limat



Ms Pang Yu Rong



# **RECOGNITION OF NEW ABC WATERS PROFESSIONALS**



# CONGRATURATIONS!

## NEW ABC WATERS PROFESSIONALS OF 2021



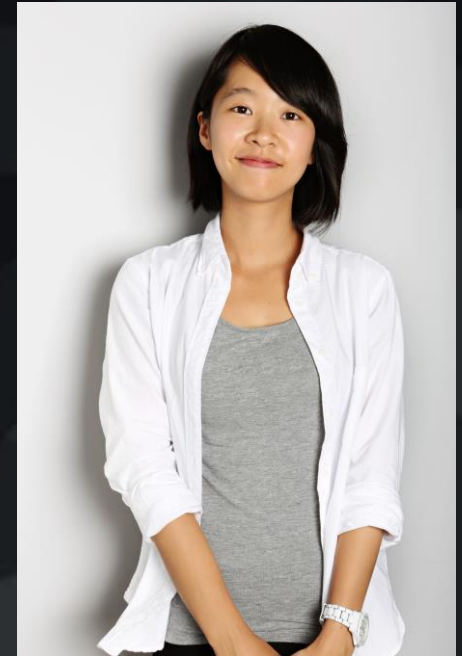
030 - Heng Juit Lian



031 - Herbert  
Julius Montevirgen



032 - Gu Lingyi



033 – Hang Ka Kee  
Cathy

# IFLA ASIA-PACIFIC REGION

IFLA Asia-Pac LA Awards submission closes on  
31 March 2021

New date for **IFLA 2021 World Congress Penang 19 - 21 Sep 2021 (virtual congress)**

Call for RP's Interest - to support IFLA APR internship programme - register with IFLA Secretariat if you are interested

Young Landscape Architects Alliance (YLAA) - calling students, graduates and young professionals who are interest in landscape architecture – FREE REGISTRATION in IFLA APR website

Damian is the official IFLA delegate from SILA

New IFLA delegate to be selected from SILA Council upon new Council is formed as Damian will exit as Immediate Past President

Current SILA members involved in IFLA works

- **Damian Tang** - IFLA APR Chair of Finance & Business Planning Standing Committee; and Chair of IFLA Student Competition Working Group
- **Kenya Endo** – IFLA Student Competition Working Group
- **Mayura Patil** - IFLA Student Competition Working Group
- **Herbert Julius Montevirgen** – IFLA APR Awards Committee & YLAA Pioneer
- **Crystal Cheng** – Nominated for APR Chair of Communication & External Affairs Committee

# SILA Events 2020

Social Media Platform

World Landscape Architecture Month (April 2020)



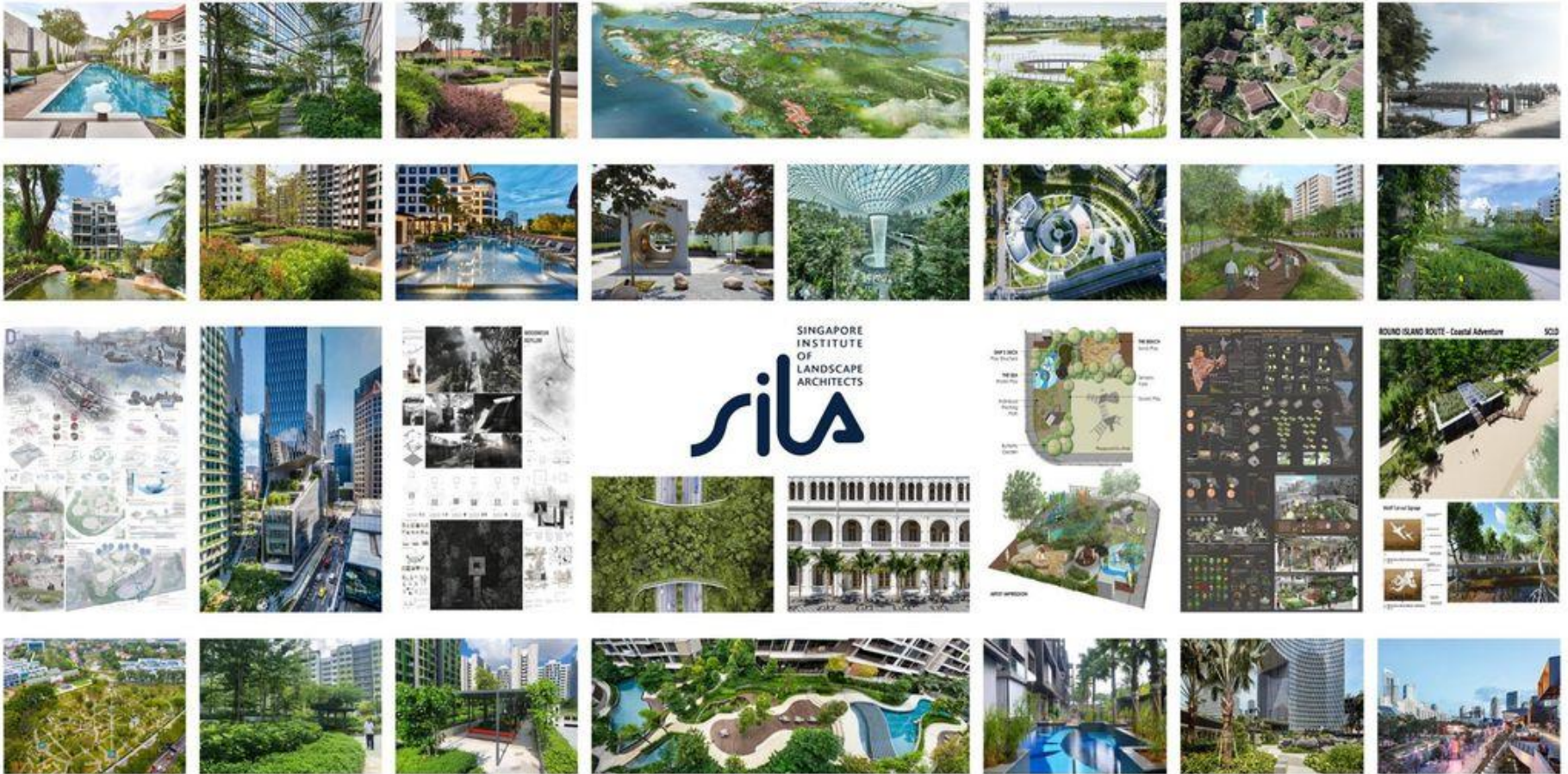
- Featuring 1 RP project everyday for the whole month of April.
- Every RPs will get to feature 2 projects.
- 2021 will be the 3<sup>rd</sup> year of WLAM Social Media feature.



# SILA Events 2020

Social Media Platform

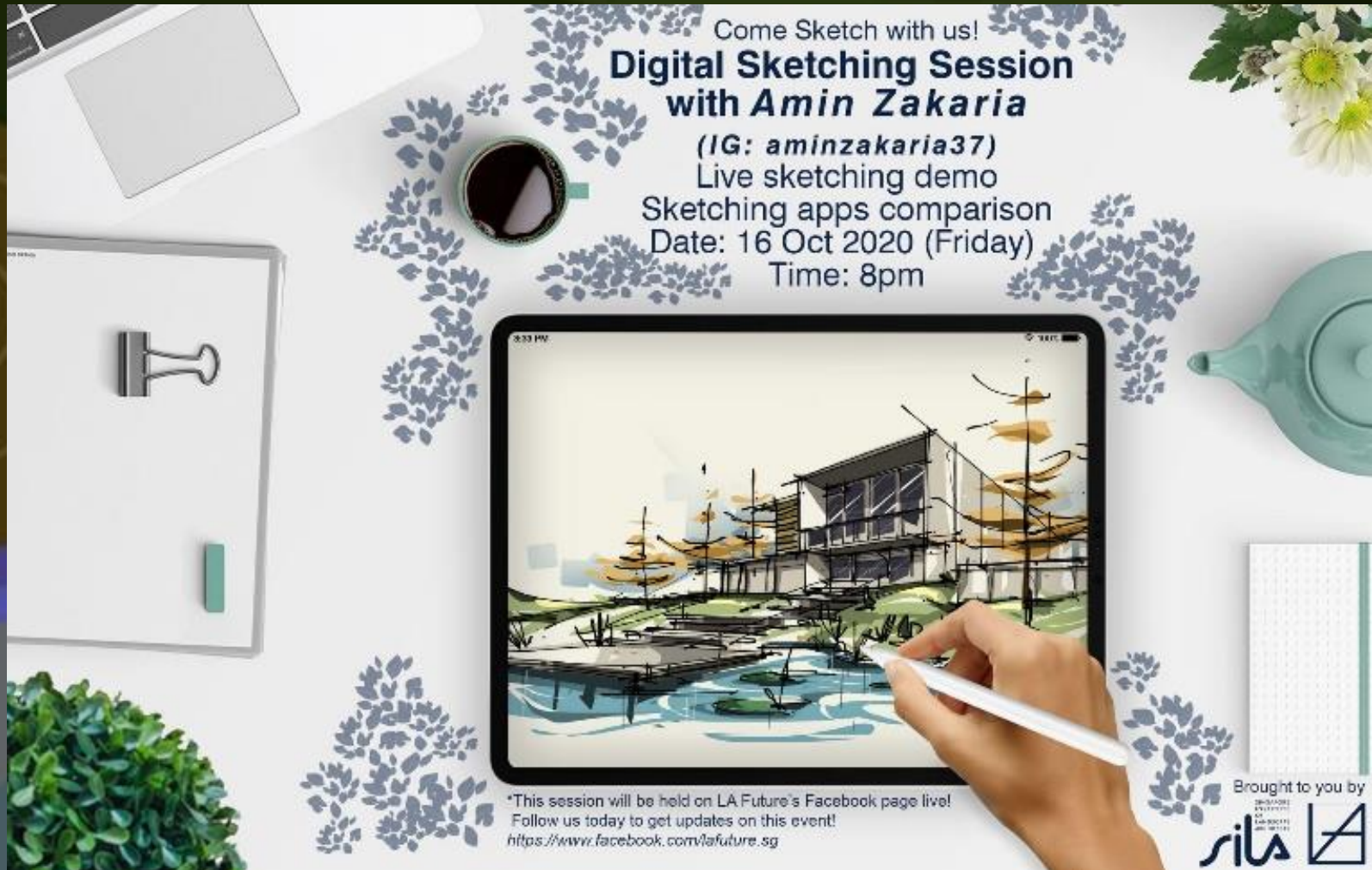
World Landscape Architecture Month (April 2020)





# SILA Events 2020

LA Future: Digital Sketching Sharing Session with Amin Zakaria




Come Sketch with us!

## Digital Sketching Session with *Amin Zakaria*

(IG: *aminzakaria37*)  
Live sketching demo  
Sketching apps comparison  
Date: 16 Oct 2020 (Friday)  
Time: 8pm

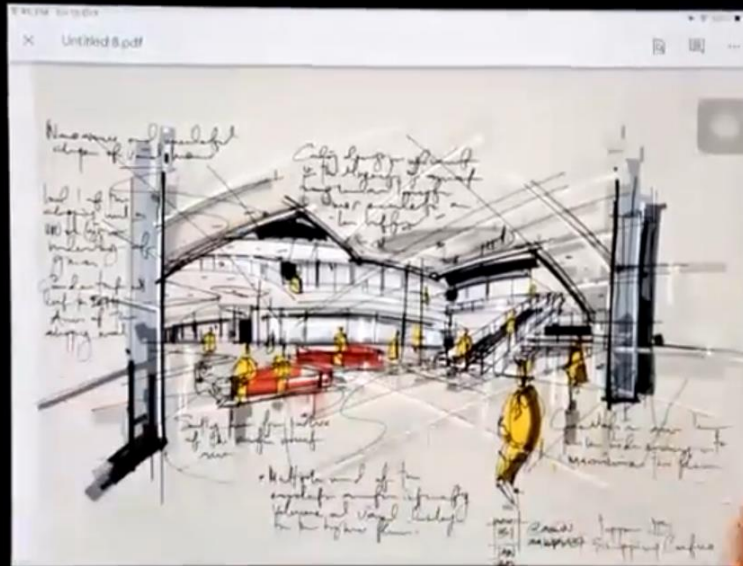
\*This session will be held on LA Future's Facebook page live!  
Follow us today to get updates on this event!  
<https://www.facebook.com/lafuture.sg>

Brought to you by  
sila 

# SILA Events 2020

LA Future: Digital Sketching Sharing Session with Amin Zakaria

Via CiscoWebex



Mayura Patil

SILA LA Future

aminzakaria

amin zakaria

46:32 / 1:30:03



# SILA Events 2020

## ArchiFest Forum (Letters to Singapore: Speculations of Agrarian Urbanisms)

SILA Representative : SILA Fellow member, Mr. Mason Tan



## WSH Landscape Forum Webinar

SILA Representative : SILA Fellow member, Mr. Henry Steed

### WSH LANDSCAPE FORUM WEBINAR

WSH Guidelines and Challenges of COVID-Safe Measures for Landscape Industry

LIAS, NParks, SAS, SILA, and WSHC jointly organized a Webinar as we discuss deliverability best practices of the Safe Management Measures for the Landscape and Horticulture Works. (+CEU, 1 point each for CPH & CA)



FRIDAY  
**18**  
SEPTEMBER  
**2020**  
2:00PM  
to  
4:00PM

Registration  
Limited  
To 100 Pax Only



SCAN TO  
REGISTER

TIME	PROGRAMME
2:00 PM	<b>Opening &amp; Welcome Address</b> by Dr Yap Him Hoo – Deputy Chairman of WSH Council Landscape Sub-Committee, DCEO NParks
2:05 PM	<b>Post Covid-19 Safety Matters</b> by Mr Chong Whye Keet – Director - Industry / CUGE, NParks
2:20 PM	<b>Crane Stability Control System</b> by Mr Chia Chee Yong - MOM
2:35 PM	<b>Stability Control System SCS for Landscape Operations</b> by Mr Henry Toh - Kiat and Kiat
2:50 PM	<b>Safe &amp; Efficient Manual Tree Access</b> by Mr Goh Mia Chun – LIAS
3:05 PM	<b>Safety Related To Landscape Works</b> by Mr Henry Steed - SILA
3:20 PM	<b>A Healthier You is a Safer You</b> An interactive presentation from WSH Council
3:30 PM	<b>Q&amp;A Session</b>
4:00 PM	<b>*END OF SESSION*</b>



website: [www.lias.org.sg](http://www.lias.org.sg) email : [secretariat@lias.org.sg](mailto:secretariat@lias.org.sg)

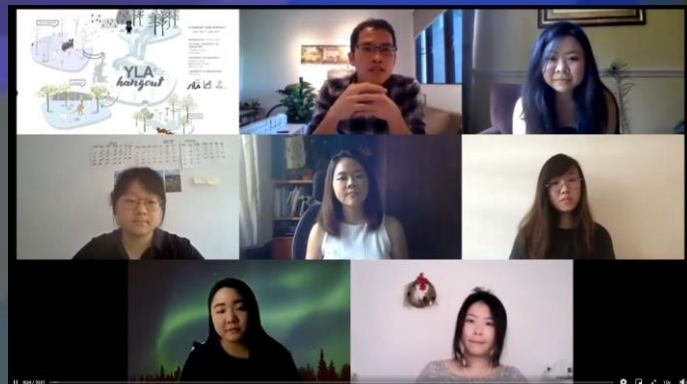
SINGAPORE  
INSTITUTE  
OF  
LANDSCAPE  
ARCHITECTS

**silA**

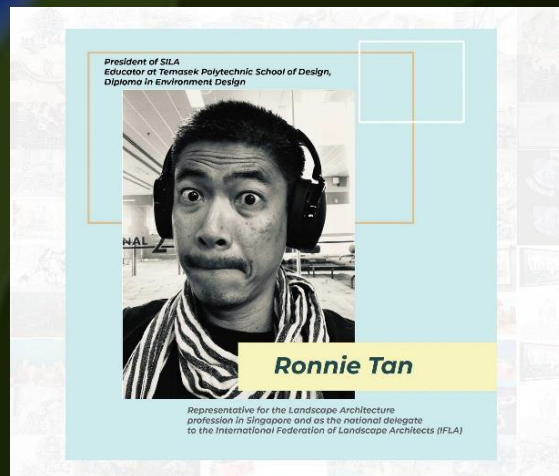
# SILA Events 2020

## LA Future: YLA Hangout #01

Online landscape architecture student sharing session (NUS, Sheffield University, Melbourne University)



**ILAM Webinar Series**  
SILA Representative:  
Mr. Ronnie Tan



**Playpoint**  
**#sketchourplayground Challenge**  
SILA Representative: SILA President  
(Part of Panel Judges)



# SILA Events 2020

## **DENSE+GREEN CITIES** ARCHITECTURE AS URBAN ECOSYSTEM

Online Presentation + Panel Discussion  
5 May 2020 6-8PM

RSVP by 1 May @ [rebrand.ly/dgc2020](https://rebrand.ly/dgc2020)



IFCL FUTURE  
CITIES  
LABORATORY

ETH zürich

SUTRA  
SINGAPORE UNIVERSITY OF  
TECHNOLOGY

DesignSingapore  
Council

NATIONAL  
DESIGN  
CENTRE

**Dense + Green Cities :**  
**Architecture as Urban Ecosystems**

SILA Representative:

1st Vice President of SILA,  
Srilalitha Gopalakrishnan  
as one of the panelist!

SINGAPORE  
INSTITUTE  
OF  
LANDSCAPE  
ARCHITECTS

**silal**

# SILA Events 2020



DISTANCE 20KM / 50KM / 100KM

ENTRY \$4

**Kebun Baru CSC 2021**  
Virtual Cycle

RACE PERIOD  
1 - 21 MARCH

  
REGISTER  
VIA LINK/  
QR CODE

  
START  
CYCLING

  
SCREENSHOT  
YOUR RESULTS

  
SYNC/UPLOAD  
YOUR RESULTS



ALL PARTICIPANTS WHO COMPLETE THEIR CATEGORY WILL RECEIVE  
A FINISHER TEE AND YOUR E-BADGE WILL LIGHT UP!

go.gov.sg/kbvirtualcycle2021

STAND A CHANCE TO WIN  
PREMIUM NOTEBOOKS BY PLAYPOINT!

TAKE A PHOTO OF YOURSELF WITH  
YOUR BICYCLE AT ANY OF THE SELECTED DESTINATIONS,  
POST THE PHOTO ON FACEBOOK/INSTAGRAM  
WITH #KBVIRTUALCYCLE2021  
#singaporeSILA#Playpoint



ORGANISER  


ORGANISING PARTNER  
  


SPONSOR  


SUPPORTED BY  


FOR ENQUIRIES: VISIT KEBUN BARU CC or CALL 64577379 (MON-SUN 10AM-10PM EXCEPT PUBLIC HOLIDAYS)

## Kebun Baru Virtual Cycling

Organising partner: SILA

Sponsor: Playpoint

180 participants

27,548.08 KM

GOH: MP Henry Kwek



# SILA Current Ongoing Projects

## **Kranji Forest Offer of Assistance**

- MND Minister Desmond Lee
- Kranji Woodlands Clearance Review Committee Chair Joseph Leong
- Nature Society Singapore Shawn Lum

## **SLAM**

- Online repository of Singapore's landscape architectural works

## **Social Media Efforts**

- Social media channel Mothership "Got this job one meh?"

## **Channel News Asia (CNA) Documentary**

- Theme of Mega Ecobuild
- To be screened early 2022. Research started in prep for filming
- Current & on-going projects aligned to theme to inform SILA

## **Job Support Scheme (JSS) Appeal**

- Appeal to MND for financial assistance. Ongoing
- Recognition of landscape architects in the Built Environment sector



# **HONORARY TREASURER'S UPDATES**

## **SILA Revenue**



# SILA REVENUE UPDATES

YEAR	TOTAL EQUITY
2013	\$195,764.38
2014	\$231,083.73
2015	\$251,026.45
2016	\$272,632.97
2017	\$294,467.55
31 Aug 2018 (EGM)	\$222,410.75
2018	\$148,667.83
2019	\$ 411,945.05
Apr 2020	\$ 435,095.86
Sep 2020	\$463,226.71
Dec 2020	<b>\$506,371.50</b>

# SILA REVENUE HIGHLIGHTS 2020

## 1. Membership, Accreditation & ABCWP renewal

# SILA ACCOUNT STATEMENT

31 Dec 2020



## Account Details

Account Number :	0010300571 - SGD	Account Name :	S'PORE INSTITUTE OF LANDSCAPE ARCHITECTS - 0010300571 - SGD
Product Type :	SGD CURRENT ACCOUNT		
Opening Balance :	458,905.20 01-Dec-2020	Earmark Amount :	0.00
Ledger Balance :	466,473.75 31-Dec-2020	Overdraft Limit :	0.00
Available Balance :	466,473.75 31-Dec-2020		

# **HONORARY TREASURER'S REPORT**

**(FOR YEAR ENDED 31 DECEMBER 2020 )**

# AUDIT ON SILA ACCOUNTS on 5 Mar 2021

## Contributors

1. SILA Hon Auditors - Helen Smith-Yeo & Phuan Ying Zee
2. SILA Secretariat  
Marcel Ewals, Director (Association Management & Consulting) & Faith Cheong, Secretariat MCI
3. SILA Accountant  
Choylen He, Assistant Manager (Outsourcing & Advisory), In.Corp Global

## Findings & Recommendations

1. SILA should attempt to write off the names under the Receivables Reconciliation (summary), considering that several of these have left the country for several years now and would not be entitled to remain as SILA members. If they have repeatedly unpaid dues, their names will keep appearing if these are not regularised.
2. For members still in Singapore who have not paid, and if they still insist on not paying them past a certain period, they should be informed and be removed as members according to SILA constitution.



# SILA's ASSETS (as at 31 Dec 2020)

Assets	31.12.2020 S\$	31.12.2019 S\$
<b>Fixed Asset</b>		
Office Equipment At Cost	\$2,775.00	\$2,775.00
Office Equipment Acc Dep	(\$2,775.00)	(\$2,775.00)
<b>Total Fixed Asset</b>	-	-
<b>Bank &amp; Cash Equivalents</b>		
Cash at Bank 001-030057-1	\$506,371.50	\$411,945.05
<b>Total Bank &amp; Cash Equivalents</b>	<b>\$506,371.50</b>	<b>\$411,945.05</b>
<b>Trade and Other Receivables</b>		
Trade Debtors	\$57,565.54	\$83,027.12
Prepayment	\$282.32	-
<b>Total Trade and Other Receivables</b>	<b>\$57,847.86</b>	<b>\$83,027.12</b>
<b>Total Assets</b>	<b>\$564,219.36</b>	<b>\$494,972.17</b>

# Income for the Year Ended 31 Dec 2020

	Jan20-Dec20 S\$	Jan19-Dec19 S\$
<b>Income</b>		
Membership & Registration		
ABC Water Professional	400	5,300
Accreditation - Non SILA	1,250	3,050
Accreditation - SILA	16,770	16,750
Affiliate	11,200	1,950
Full Member	27,091	33,147
Graduate	1,000	1,900
Student	195	37
Recognised Practice	41,600	40,550
LA Accreditation Examination	7,900	4,650
<b>Total Membership &amp; Registration</b>	<b>107,406</b>	<b>107,334</b>
<b>Event Income</b>		
ABCWP Workshop	1,000	-
BIM Workshop	-	-
Built-with-Heart	-	37,200
IFLA Student Design Competition	253	-
IFLA - Government Grant	-	30,000
IFLA - SingEx Exhibition	-	579,277
SLAA Award	-	133,290
SILA – Examination	3,300	-
SDA & LA - Participant	(7)	-
SDA - Sponsorship	(35)	-
Student Design Award & LA Future	-	7,693
Singapore Landscape Visit	-	4,500
<b>Total Event Income</b>	<b>4,511</b>	<b>791,959</b>
<b>Build w Heart CSR</b>		
Sponsorship - Build w Heart	3,000	-
	<b>3,000</b>	<b>-</b>
<b>Total Income</b>	<b>114,917</b>	<b>899,293</b>

# Expenditure for the Year Ended 31 Dec 2020

	Jan20-Dec20 S\$	Jan19-Dec19 S\$
<b>Expenditure</b>		
<b>Event Expenses</b>		
Built-with-Heart	-	35,946
IFLA	1,851	558,433
Student Design Award & LA Future	-	5,830
SLAA	-	108,218
<b>Total Event Expenses</b>	<b>1,851</b>	<b>708,426</b>
<b>LA Accreditation</b>		
LA Future Project Expenses	58	-
LA Examiners Fee	1,050	-
<b>Total LA Accreditation Expenses</b>	<b>1,108</b>	<b>-</b>
<b>General &amp; Administrative Expenses</b>		
Council Expenses	-	1,182
Accountancy Fee	11,900	12,000
Association Mgmt Platform	-	2,134
Bank Charges	1,203	3,347
Bad debts written off	26,099	2,350
Paypal Charges	-	143
Courier & Postage	-	61
Gifts & Sponsorship	1,200	2,200
Late Payment of Corporate Tax	162	-
Printing & Stationery	-	638
Professional Fee	850	850
SILA & RP CNY event celebration	870	136
Election Expense	40	-
Rental	-	710
Secretariat Fee	39,040	39,000
Transportation	-	153
Website expenses	939	238
<b>Total General &amp; Administrative Expenses</b>	<b>82,303</b>	<b>65,142</b>
<b>Membership Expenses</b>		
LA Accreditation Honorarium and Others	-	3,821
<b>Total Membership Expenses</b>	<b>-</b>	<b>3,821</b>
<b>Total Expenses</b>	<b>85,262</b>	<b>777,389</b>

# REMINDER ON SILA's FINANCIAL PROCESSES

## Implementation since 2 Feb 2018

1. Payment by cash and **cheque (NEW, with immediate effect)** shall NOT be accepted. Preferred modes are:
  - Interbank transfer OR PayNow (Invoice number must be listed in the transfer description)
  - Credit Card via GlueUp (service/admin fees are to be borne by payer)
2. Future membership and accreditation renewal process shall start from 1 October and end on 31 Jan, the following year.
3. An administrative fee of S\$100 shall be charged for late payment, after 31 January, as per SILA's Constitution, Clause 9.10.2 (page 11)
4. Issuance of advance invoice for all membership dues had ceased. Softcopy reminders are sent instead.





**ELECTION OF SILA COUNCIL  
COMMITTEE MEMBER  
FOR YEAR 2021-2023**

# SILA COUNCIL MEMBERS 2019 - 2020

S/No.	Post	Name	Term
1	President	Ronnie Tan	2018-2021*
2	Vice President 1	Srilalitha Gopalakrishnan	2020-2022
3	Vice President 2	Yvonne Tan	2020-2022
4	Honorary Sec	Heng Juit Lian	2019-2021
5	Honorary Treasurer	Derek Loei	2018-2021*
6	Immediate Past President	Damian Tang	2018-2022
7	Council Member #1	Anna Yap	2019-2021
8	Council Member #2	Emily Lim	2020-2022
9	Council Member #3	Kenya Endo	2020-2022
10	Council Member #4	Kwan Yu Wen	2020-2022
11	Council Member #5	Jiang Chan Chan	2019-2021
12	Council Member #6	Herbert Julius Montevirgen	2019-2021
13	Council Member #7	Xu Jingyi, Audrey	2019-2021
14	Ordinary Council Member #8	Terence Tan	2019-2021
15	Ordinary Council Member #9	Jeverss Choo	2020-2022
16	Honorary Auditor	Helen-Smith-Yeo	2020-2021
17	Honorary Auditor	Phuan Ying Zee	2020-2021

# SILA COUNCIL MEMBERS (CURRENT)



# ELECTION PROCEDURE

- The election of SILA Council Member procedures are as follows:
- Only Fellow, Full and Graduate Members present in the meeting will be eligible to vote for SILA Council Member for year 2020-2022.
- Candidates with the highest vote count for each position shall form/join the new SILA Council for year 2020-2022.
- Results of the election will be announced at the AGM 2020.
- The term of the SILA Council Member is (2) two years.



# ELECTION PROCEDURE

## NOMINATIONS

- Nomination concluded on **18 Mar 2021, 6pm**

## TOWN HALL 2 CPD Points

- **23 Mar 2021, 7pm on Zoom.**  
Introduction to online voting process
- Introduction of Nominees
- Q&A session

## ONLINE VOTING 2 CPD Points

- Held on **Election Runner**
- Voting duration:  
**23 Mar 2021, 9pm to 26 Mar 2021, 6pm**
  - **30 Mar 2021, 7.30pm on Zoom**
- Reports by President, Hon. Treasurer, Pillar Heads and Subcommittee Chairs
- Announcement of Council Election Results

## e-AGM 2 CPD Points

# ELECTION PROCEDURE

The following six (6) positions were opened for SILA Council Member election :

- **1<sup>st</sup> Vice President & 2<sup>nd</sup> Vice President**  
(nomination open for Fellow, Full & Graduate members with voting rights)
- **3x Council Members**  
(nomination open for Fellow, Full & Graduate members with voting rights)
- **Ordinary Council Member**  
(nomination open for Fellow, Full, Graduate or Affiliate members)

*\* Both President and Hon. Treasurer will continue their term up to AGM 2021 to regularize as per SILA Constitution, whereby the terms for VP1 & VP2 are not to overlap with President and Hon. Treasurer. Also, the Immediate Past President remains till 2021.*

# POSITIONS FOR ELECTION

S/No.	Post	Name	Term
1	President		2021-2023
2	1 <sup>st</sup> Vice President	Srilalitha Gopalakrishnan	2020-2022
3	2 <sup>nd</sup> Vice President	Yvonne Tan	2020-2022
4	Honorary Secretary		2021-2023
5	Honorary Treasurer		2021-2023
6	Immediate Past President	Ronnie Tan	2021-2023
7	Council Member #1		2021-2023
8	Council Member #2	Emily Lim	2020-2022
9	Council Member #3	Kenya Endo	2020-2022
10	Council Member #4	Kwan Yu Wen	2020-2022
11	Council Member #5		2021-2023
12	Council Member #6		2021-2023
13	Council Member #7		2021-2023
14	Ordinary Council Member #8		2021-2023
15	Ordinary Council Member #9	Jeverss Choo	2020-2022
16	Honorary Auditor		2021-2022
17	Honorary Auditor		2021-2022