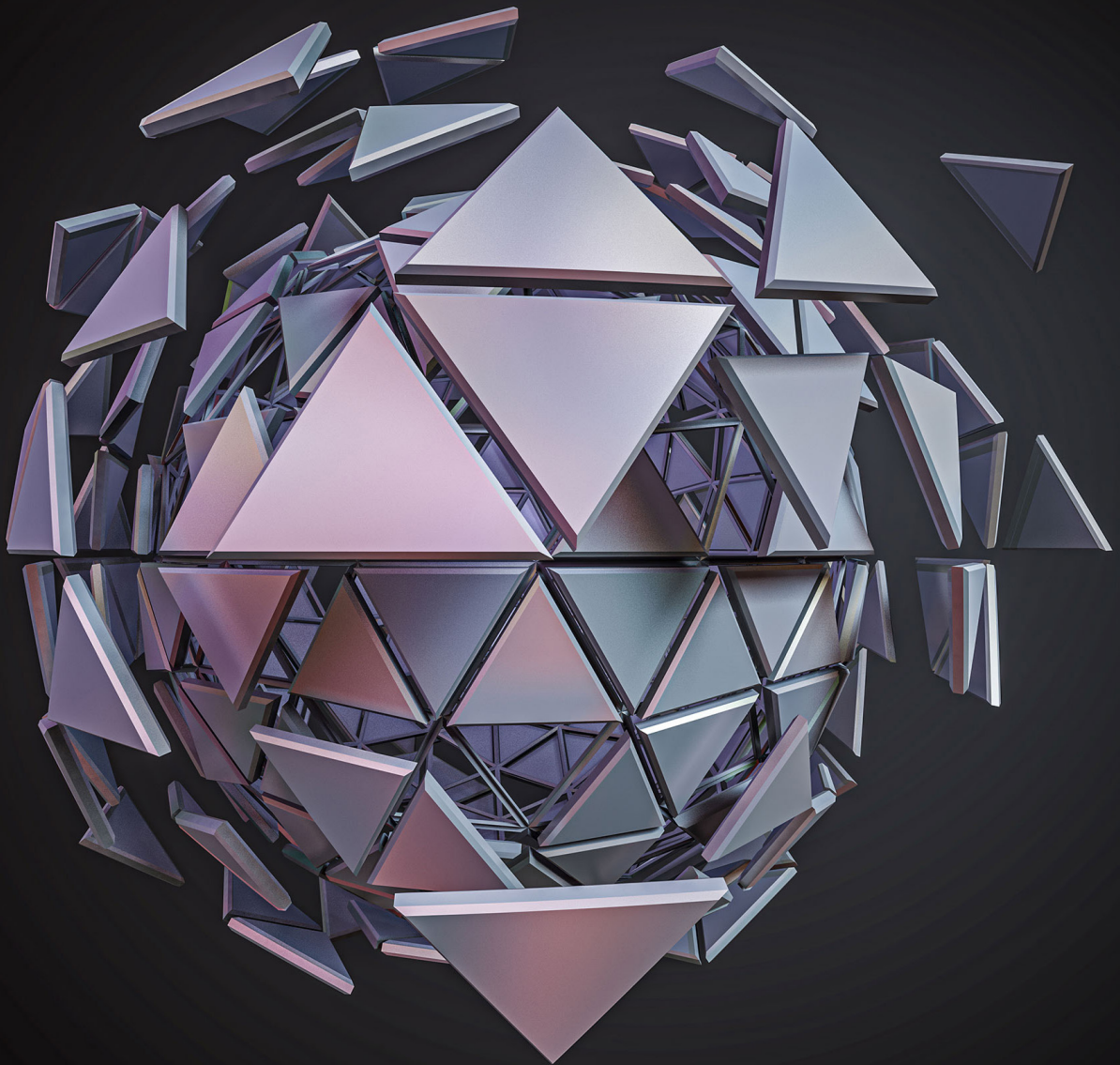


Deloitte.

TaxMax – The 47th series
Building resilience for
tomorrow

Tuesday & Wednesday, 23 & 24 November 2021, Live Webcast
An event by Deloitte Tax Academy



MAKING AN
IMPACT THAT
MATTERS
since 1845

Overview

The 47th TaxMax, themed '**Building resilience for tomorrow**' will see experts providing an in-depth analysis of Budget 2022 focusing on the 3Rs: Recovery, Resilience, and Reformation, as well as discuss how we can bounce back and thrive post-pandemic. Expect insights into the latest tax updates, its impact, and important measures needed for today's rapidly changing landscape.

Highlights

- Taxation for nation building and sustainable growth - A conversation with the CEO of the Inland Revenue Board of Malaysia
- 2022 National Budget highlights
- Transfer pricing compliance - how should proactive organisations prepare
- Latest tax development
- Views from winners of Malaysia's Best Managed Companies Award 2021
- Embarking on your IPO journey
- Global minimum tax - The good, the bad and the ugly

Who should attend

CEOs, CFOs, finance and legal professionals, and any discerning individuals who wish to gain insights into the Budget, and capitalise opportunities on a refreshed business landscape.

Agenda

Time	Event	Speaker(s)
Tuesday, 23 November 2021		
2.00pm - 3.00pm	Taxation for nation building and sustainable growth - A conversation with the CEO of the Inland Revenue Board of Malaysia	<ul style="list-style-type: none"> • YBhg Datuk Mohd Nizom Sairi, Chief Executive Officer of IRBM • Sim Kwang Gek
3.00pm - 3.15pm	Break	
3.15pm - 3.30pm 3.30pm - 4.30pm 4.30pm - 5.30pm	2022 Budget highlights: <ul style="list-style-type: none"> • Personal income tax • Corporate and other taxes, incentives • Customs and indirect taxes 	<ul style="list-style-type: none"> • Ang Weina and Chee Ying Cheng • Mohd Fariz and Thean Szu Ping • Tuan Mohammad Sabri bin Saad, Deputy Director General of Customs and Internal Taxes (SST), Royal Malaysian Customs Department • Tan Eng Yew and Senthuran Elalingam
5.30pm	End of Day 1 webcast	
Wednesday, 24 November 2021		
8.30am - 10.00am	Transfer pricing compliance – How should proactive organisations prepare? <ul style="list-style-type: none"> • IRBM's adjusted SOP for audit • Common audit issues and observations • Preparing for audit on the pandemic year – key takeaways from the OECD guidance • Some key regional and global developments in tax • Role of technology in proactive and progressive risk management 	Moderator: Theresa Goh <ul style="list-style-type: none"> • Hisham Rusli, Director, Multinational Tax Branch, IRBM • Norzilah Mat Arbak, Deputy Director, Field Audit on Services Division Multinational Tax Branch, IRBM • Subhabrata Dasgupta
10.00am - 10.15am	Break	
10.15am - 12.00pm	Latest tax development <ul style="list-style-type: none"> • Selected public rulings/guidelines • Selected case laws 	<ul style="list-style-type: none"> • Mark Chan • Tan Wei Chuan • Thin Siew Chi
12.00pm - 1.00pm	Views from winners of Malaysia's Best Managed Companies Award 2021 <ul style="list-style-type: none"> • The views on 2022 National Budget and the current economy • Measures needed to boost our economy 	Moderator: Chee Pei Pei <ul style="list-style-type: none"> • Chin Shin Yi, Chief Financial Officer, BIG Pharmacy Group • Pierre Pang, Group Executive Director, MAMEE-Double Decker • Prof Yeah Kim Leng, Professor of Economics, Sunway University Business School
1.00pm - 2.00pm	Break	
2.00pm - 3.45pm	Embarking on your IPO journey <ul style="list-style-type: none"> • Advance planning for a successful IPO • IPO trends in Malaysia and around the world • Pre-IPO considerations and strategies to avoid pitfalls • How employees will benefit from the IPO 	Moderator: Toh Hong Peir <ul style="list-style-type: none"> • Choy Mei Won • Chee Ying Cheng • Leonard Woo • Wong Kar Choon
3.45pm - 5.30pm	Global minimum tax - The good, the bad and the ugly <ul style="list-style-type: none"> • Latest updates • Impact on business • Where does Malaysia go from here 	Moderator: Tan Hooi Beng <ul style="list-style-type: none"> • Prof Dr Jomo Kwame Sundaram, Senior Adviser, Khazanah Research Institute • Dr Esther A.P. Koisin, Director, Department of International Taxation, IRBM • Sivasuriyamoorthy Sundara Raja, Deputy Chief Executive Officer, Investment Promotion & Facilitation of MIDA
	End of webcast	

Guest speakers



YBhg Datuk Mohd Nizom Sairi
Chief Executive Officer, Inland Revenue Board of Malaysia (IRBM)

Datuk Mohd Nizom Sairi was appointed as the Chief Executive Officer of Inland Revenue Board of Malaysia on 19 October 2021.

Datuk Mohd Nizom Sairi has a wealth of knowledge on the operations and administration of direct taxes in Malaysia. In his 35-year career with the IRBM, He has served in various senior capacities including Director of Compliance Department, Director of Investigation Department, State Director of Perak, Director of Malaysian Tax Academy, Deputy CEO (Management) and Deputy CEO (Tax Operations) before his appointment as Chief Executive Officer.

Datuk Mohd Nizom Sairi frequently represents Malaysia and the IRBM at conferences, seminars and workshops. Datuk Mohd Nizom Sairi is passionate in his vision of creating a tax administration that is seen as a strategic partner by all stakeholders, with the end result of building and creating a well-informed society on tax matters, thereby realising the objective of increasing voluntary compliance in Malaysia.



Tuan Mohammad Sabri Bin Saad
Deputy Director General of Customs and Internal Taxes (SST), Royal Malaysian Customs Department

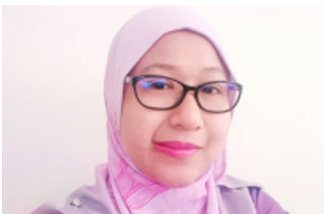
Mohammad Sabri Bin Saad has served for almost 30 years at the Department of Royal Customs Malaysia (JKDM) and has wide experience in various roles including in the Inland Taxation Department (Sales Tax/Services Tax/Tourism Tax and many more), Import and Export, Free Industrial Zone, Enforcement and Goods and Services Tax (GST).

During this time, Mohammad Sabri Bin Saad, holds the position of Director of Inland Tax Operations, Mid-zone and from 30 August 2021, he will also resume his duty as the Deputy Director General of Customs and Internal Taxes (SST), of Royal Malaysian Customs Department.



Hisham Rusli
Director, Multinational Tax Branch, Inland Revenue Board of Malaysia (IRBM)

Hisham Rusli has served over 23 years in various departments in the IRBM including Large Taxpayers Branch. He currently leads the Multinational Tax Branch which facilitates compliance monitoring of MNCs/Transfer Pricing cases, and capacity building in complex area of Transfer Pricing, ensure consistency in implementation of Transfer Pricing regulations, and improve accessibility to taxpayers with Transfer Pricing related issues.



Norzilah Mat Arbak
Deputy Director, Field Audit on Services Division, Multinational Tax Branch, Inland Revenue Board of Malaysia (IRBM)

Norzilah Mat Arbak has served IRBM for over 20 years, with experience in tax collection management, corporate tax audit and investigations, as well as transfer pricing audit. She is currently the Deputy Director of Field Audit on Services Division at the Multinational Tax Branch. She is also an appointed Technical Reference Officer for the branch and is also responsible for the in-house training and capacity building of the transfer pricing auditors.



Chin Shin Yi
Chief Financial Officer, BIG Pharmacy Group

Chin Shin Yi is the CFO of BIG Pharmacy Group. She has more than 15 years of experience in corporate and operational finance management in both public listed and multi-national companies in technology solutions, sports marketing and retail sectors. Shin Yi received her Bachelor of Science in Accounting and Finance from University of London, she is also a Fellow of the Association of Chartered Certified Accountants.



Pierre Pang
Group Executive Director, MAMEE-Double Decker
 Pierre joined MAMEE in January 2009.

Starting out as an Assistant Brand Manager for the Mister Potato brand, Pierre is today Group Executive Director overseeing Mamee's commercial and manufacturing portfolio. Growing together with the team at Mamee, Pierre plays a strategic role in driving growth and market share both locally and regionally.

As part of his quest to be a lifelong learner, Pierre has completed his executive education programs in both Harvard and Wharton Business School in the US. Prior to joining Mamee, Pierre was part of the Ogilvy & Mather advertising group.



Prof Yeah Kim Leng
Professor of Economics, Sunway University Business School

He is Professor of Economics and the Director of Economic Studies Program at the Jeffrey Cheah Institute on Southeast Asia (JCI) at Sunway University. He assumed the current positions in May 2016 following a 2-year stint as a business school dean at another local private university. Prior to that, he spent over 20 years in the private sector, principally as the chief economist at the country's leading domestic credit rating agency. He graduated with a Bachelor of Science in Forestry from Universiti Pertanian Malaysia in 1978 and obtained an MBA in 1988 and a PhD in Agricultural and Resource Economics in 1992 from the University of Hawaii, Honolulu, USA under the East-West Center degree participant award program. He is currently the Deputy President of the Malaysian Economic Association. He was a former external member of the central bank's Monetary Policy Committee, a former trustee of the Malaysian Tax Research Foundation and a former member of the National Consumer Advisory Council at the Ministry of Domestic Trade and Consumer Affairs.



Prof Dr Jomo Kwame Sundaram
Senior Adviser, Khazanah Research Institute

Dr Jomo Kwame Sundaram is Senior Adviser at the Khazanah Research Institute, a Fellow at the Academy of Science, Malaysia, Emeritus Professor at the University of Malaya and a Fellow at the Initiative for Policy Dialogue, Columbia University. He was UN Assistant Secretary General for Economic Development, Assistant Director General, Food and Agriculture Organization (FAO), Founder-Chair of International Development Economics Associates (IDEAs) and President of Malaysian Social Science Association. Jomo has authored and edited over a hundred books, written many academic papers, research reports and media articles, besides translating 12 volumes. He received the 2007 Wassily Leontief Prize for Advancing the Frontiers of Economic Thought.



Dr Esther A.P. Koisin
Director, Department of International Taxation, Inland Revenue Board of Malaysia (IRBM)

Dr Esther A.P. Koisin is currently the Director of Department of International Taxation of IRBM. She has been involved in international taxation for many years and has served as Deputy Director of the Treaty Division, Director of MAP Division and Director of International Affairs and Exchange of Information Division in IRBM. She has also served as the Deputy Director of the International Training Centre of the Malaysian Tax Academy for several years.

She also holds the position of Deputy Chair to the IRBM Digital Economy Taskforce. She participates in the discussion of the two-pillar solution to address the tax challenges arising from the digitalisation of the economy as Malaysia's country delegate to the OECD Task Force on Digital Economy and Working Party 11.

She holds a Doctorate degree in Management from Universiti Utara Malaysia, an Economics (Business Administration) degree from University of Malaya and a Law degree from University of London.



Sivasuriyamorthy Sundara Raja
Deputy Chief Executive Officer, Investment Promotion & Facilitation, Malaysian Investment Development Authority (MIDA)

A Business Administration graduate from the University of Malaya, Siva joined MIDA in 1989.

Siva was posted to Germany twice to head MIDA's office in Cologne and Frankfurt. As an overseas Director in Germany, he was responsible to attract foreign direct investments from Germany, Belgium, the Netherlands and Luxembourg.

Throughout most of his 33-year career with MIDA, Siva was involved in various projects on Malaysia's industrial development, such as the liberalisation of the manufacturing sector, formulation of investment incentives and policies, empowerment of MIDA, coordination of the Study on Exit Strategy for Foreign Labour Intensive Industries as well as the formulation of policies and guidelines for the establishment of Domestic Investment Strategic Fund (DISF) to accelerate the shift of Malaysian-owned companies in high technology industries.

Siva was promoted as the Deputy Chief Executive Officer of MIDA in May 2021.

Deloitte speakers



Sim Kwang Gek
Country Tax Leader

Kwang Gek is the Malaysia Tax Leader and Malaysia M&A tax practice leader. She has over 24 years of experience in tax with extensive experience in advising local and multinational companies on inbound and outbound investments, restructuring of operations, mergers and acquisitions, incentive evaluation and applications, regulatory applications to various government agencies, establishment of businesses in Malaysia as well as managing the tax compliance affairs of a portfolio of clients.

Kwang Gek has been recognised as one of the leading tax advisers by the International Tax Review in current edition of “The World’s Leading Tax Advisers” and Women in Tax Leaders Guide.



Tan Hooi Beng
Deputy Tax Leader

Hooi Beng leads the International Tax service line and has more than 20 years of experience in corporate and international tax. He has vast experience in advising multinational corporations on corporate structuring and restructuring, mergers and acquisitions, international offshore financial centres, business model optimisation, tax treaties and cross-border taxation generally. An avid writer and speaker, he regularly contributes thought leadership content in print media and takes part in speaking engagements. Hooi Beng has been listed in the current edition of “The World’s Leading Tax Advisers” (Euromoney). He is a council member of the Chartered Tax Institute of Malaysia, a Chartered Accountant of the Malaysian Institute of Account and a licensed tax agent under Malaysian Income Tax Act, 1967.



Ang Weina
Global Employer Services Leader

Weina leads the Global Employer Services (GES) team in managing employer-employee tax regulatory and advisory matters including international immigration solutions. With a career spanning more than 30 years, she is regularly featured in the local media. She is a licensed tax agent under Malaysian Income Tax 1967, and is recognised as Women in Tax Leader in the International Tax Review.



Chee Ying Cheng
Global Employer Services Executive Director

Ying Cheng has over 20 years of cumulative experience gained from major accounting firms. Her primary roles are advising on mobility management, employment tax matters, immigration compliance and rewards planning includes shared based compensation schemes. She handles a varied portfolio comprising major multi-national corporations across most industries including international financial institutions, oil and gas etc.



Mohd Fariz Mohd Faruk
Business Tax Executive Director

Fariz brings with him more than 14 years of working experience in business tax compliance and advisory, specialising in the financial services industry as well as government-linked companies.

He is Deloitte Malaysia's Government & Public Services Tax Leader. He is also a subject matter expert on FATCA and CRS on AEOI, Deloitte Private – family enterprise consulting, inheritance and succession planning.



Thean Szu Ping
Business Tax Executive Director

Szu Ping has over 20 years of experience in the public accounting practice, providing local and international clients advisory services. She is involved in conducting tax due diligence exercises, assisting clients in tax audits and investigation by the Inland Revenue Board of Malaysia and routinely assists clients with applications for tax incentives and licenses from MIDA and other authorities. Szu Ping also assists clients in complying with transfer pricing regulations, conducting prudential tax audits and applying for stamp duty exemptions.



Tan Eng Yew
Indirect Tax Leader

Eng Yew has over 23 years of experience in the areas of customs, excise, sales, service tax and GST. He currently advises clients on various indirect tax matters, including impact on proposed transactions, indirect tax reviews and due diligence and client representation with the relevant tax authorities. He has also represented clients in various disputes before the customs authorities and before the Customs Appeal Tribunal. Eng Yew actively contributes to Chartered Tax Institute of Malaysia ("CTIM") and is currently a member of the CTIM's Technical Committee - Indirect Taxation, Examination Committee and also GST Committee.



Senthuran Elalingam
Global Indirect Tax Clients & Industries Leader

Senthuran has over 17 years of experience advising on indirect tax matters in Australia, China and Malaysia with a specific focus on Financial Services. He currently leads the Indirect Tax FSI practice for Deloitte Malaysia, and his experience includes advising a number of Malaysian and multinational banks and insurers on the implementation of GST and reimplementation of SST.



Theresa Goh
Transfer Pricing Executive Director

Theresa is a Senior Transfer Pricing partner (National Transfer Pricing Leader 2003 to 2020) with over 30 years in transfer pricing and corporate tax matters.

Her expertise in tax and transfer pricing controversy management includes preparation of litigation strategy involving anti-avoidance issues and application of alternative transfer pricing methods during audits. She has also assisted clients to conclude the first three advance pricing agreements (APAs) signed in Malaysia and is currently advising on many other APA applications.



Subhabrata Dasgupta
Transfer Pricing Leader

Subho leads the transfer pricing service line and has extensive experience on global and regional transfer pricing documentation and planning engagements involving policy design, implementation, delivery and follow-up/monitoring elements, both foreign and local multinational and domestic groups.

With an experience spanning more than 13 years, he has served clients from varied industries: electronics and electrical, pharmaceuticals, real estate & construction, consumer and industrial products, financial services, telecommunications, oil & gas, primary and secondary metal manufacturing, agri-business, and aerospace and defence, among others. His assignments have involved global/local documentation, supply chain restructuring and due diligence projects, audit defence, APA, Action 13 TPD and CbCR, etc.



Mark Chan

Financial Services Industry Tax Leader

Mark brings with him over 17 years of experience in the public accounting practice and commercial sector in corporate and GST compliance and advisory. As a tax consultant, Mark has served insurance clients in all corporate tax related matters including tax compliance, dispute resolution, tax advisory, mergers and acquisitions and tax due diligence. Mark also served as a member of the GST technical committee of the Chartered Tax Institute of Malaysia as a private sector representative and represented life and general insurance companies at industry association deliberations.



Tan Wei Chuan

Transfer Pricing Executive Director

Wei Chuan is an Executive Director of Deloitte Malaysia's tax practice, based in our Penang office. With over 15 years of tax experience in Malaysia, his expertise is in corporation compliance matters, tax planning, tax due diligence, tax audit, transfer pricing and indirect taxes including GST implementation. He has also advised on personal tax planning and compliance matters as well as immigration solutions for international assignees under Global Employer Services (GES) service line.



Thin Siew Chi

Business Tax Executive Director

Siew Chi has more than 18 years of experience in both corporate tax compliance and tax advisory work serving a diversified portfolio of local and multinational clients engaged in a wide range of industries such as trading, manufacturing, telecommunications, technology, plantations, property, retail and other services sectors. Her tax advisory experience includes advising on various financial and business transactions, tax incentives, international tax planning on cross border transactions (inbound and outbound investments), structuring of mergers and acquisitions, group restructuring exercises, tax review and tax due diligence work.



Chee Pei Pei

Deloitte Private Leader

Pei Pei has more than 20 years of tax experience both in corporate and expatriate tax services. Her clients' varies from manufacturing, trading and construction to consultancy services which includes multinational group as well as companies listed on the Kuala Lumpur Stock Exchange.

Pei Pei has taken many corporate tax assignments in relation to both local and overseas investment structuring.



Toh Hong Peir

Oil, Gas and Chemicals Sector Leader

Hong Peir is Deloitte Malaysia's Oil, Gas & Chemicals Sector Leader. He has over 20 years of experience in professional practice, commercial group and upstream oil and gas industry. Prior to joining Deloitte, Hong Peir was a tax planning specialist in a US based independent energy company. He was also the Head of Tax of a Malaysian conglomerate, covering banking & financial services, manufacturing, property development & investment industries and a Senior Business Planner of an Oil & Gas super major. His corporate experience has enabled him to translate technical professional advice into practical business solutions.



Choy Mei Won

Business Tax Executive Director

Mei Won has over 20 years of experience in both tax advisory and corporate tax compliance work. She has served various clients, both multinationals (MNCs) and local listed and privately owned companies in a range of business sectors including plantation, property development, trading, manufacturing, construction, technology, consumer products, education, oil and gas and other services sectors. She has extensive experience in tax structuring, cross border transactions, merger and acquisition, tax audit, tax due diligence and tax incentive evaluation and application.



Leonard Woo

Financial Advisory Executive Director

Leonard has more than 25 years of advisory experience in business valuation, M&A strategy and transaction advisory. His many years of work experience have given him a broad perspective and deep understanding of the various aspect of the M&A lifecycle.

Leonard has clients ranging from start-ups to large conglomerates. He has assisted many technology-based companies in their fundraising journey and intellectual property valuations. Leonard has provided his expert opinion of values and damages on several high-profile financial litigation cases.



Wong Kar Choon

IPO Leader

Kar Choon is an Audit Partner and the IPO leader in Deloitte Malaysia. He has more than 19 years of experience in Public Accounting in Malaysia and the United States, providing assurance and advisory services to clients in the financial services industry, including banking and capital market sectors.

Kar Choon has led audits for public listed companies and local subsidiaries of large multinational corporations. He is also involved in Global IFRS and Offerings Services related transactions which include Initial Public Offerings (“IPO”) and Reporting Accountants for Issuance of Debts/Sukuk.

Registration

Date	Time
Tuesday, 23 November 2021	2.00pm - 5.30pm
Wednesday, 24 November 2021	8.30am - 5.30pm

Registration details

- Online registration: Click [here](#)
- Closing date: 16 November 2021
- An acknowledgement email will be sent upon receipt of the online registration form
- No refund of cancellation upon registration
- Webcast link and password will be provided by Friday, 19 November 2021 upon receipt of full payment

Enquiries

Contact person:

- Zarina Ibrahim +603 7610 8130
- Noorashikin Hamzah +603 7610 8135

Email: mytaxmax@deloitte.com

Webinar fee

RM400 per delegate (inclusive of 6% SST).

Payment details

Company name: Deloitte Tax Services Sdn Bhd
Bank name: Standard Chartered Bank Malaysia Berhad
Bank address: 18-22, Jalan SS21/39, Damansara Utama,
47400 Petaling Jaya, Selangor Darul Ehsan, Malaysia
Swift code: SCBLMYKXXXX
Account: 620-194-720-320

Please submit your remittance slip to mytaxmax@deloitte.com and ensure that participant's name(s) is stated in the remittance slip.

E-certificate will be issued upon full attendance and submission of the feedback form. CPE hours are claimable through participants' own applications to the awarding bodies. This webinar is not HRDC claimable.

Details of your registration and participation in this event will be collected by Deloitte in accordance with our Privacy Policy, located at <http://www.deloitte.com/my>

Disclaimer: The organiser reserves the right to cancel and/or make changes to the programme, venue, speaker(s)/ facilitator(s) and/or topic(s) if warranted by circumstances beyond its control. A minimum of 3 days' notice will be given.

Deloitte.

Deloitte refers to one or more of Deloitte Touche Tohmatsu Limited (“DTTL”), its global network of member firms, and their related entities (collectively, the “Deloitte organization”). DTTL (also referred to as “Deloitte Global”) and each of its member firms and related entities are legally separate and independent entities, which cannot obligate or bind each other in respect of third parties. DTTL and each DTTL member firm and related entity is liable only for its own acts and omissions, and not those of each other. DTTL does not provide services to clients. Please see www.deloitte.com/about to learn more.

Deloitte Asia Pacific Limited is a company limited by guarantee and a member firm of DTTL. Members of Deloitte Asia Pacific Limited and their related entities, each of which are separate and independent legal entities, provide services from more than 100 cities across the region, including Auckland, Bangkok, Beijing, Hanoi, Hong Kong, Jakarta, Kuala Lumpur, Manila, Melbourne, Osaka, Seoul, Shanghai, Singapore, Sydney, Taipei and Tokyo.

About Deloitte Malaysia

In Malaysia, services are provided by Deloitte Tax Services Sdn Bhd and its affiliates.

This communication contains general information only, and none of Deloitte Touche Tohmatsu Limited (“DTTL”), its global network of member firms or their related entities (collectively, the “Deloitte organization”) is, by means of this communication, rendering professional advice or services. Before making any decision or taking any action that may affect your finances or your business, you should consult a qualified professional adviser.

No representations, warranties or undertakings (express or implied) are given as to the accuracy or completeness of the information in this communication, and none of DTTL, its member firms, related entities, employees or agents shall be liable or responsible for any loss or damage whatsoever arising directly or indirectly in connection with any person relying on this communication. DTTL and each of its member firms, and their related entities, are legally separate and independent entities.