



**every
one**

deserves a decent
place to live.

REBUILDING CIANJUR- WEST JAVA

Cianjur Earthquake Disaster Response

BACKGROUND

An earthquake of 5.6 M at a depth of 10 km occurred in West Java Province (Indonesia) on **21 November at 13:21 WIB** (Jakarta time). The epicenter of the earthquake was on land, about 10 km south-west of Cianjur Regency (West Java Province).

USGS PAGER estimates that up to **242,000 people** were exposed to very strong shaking and up to **978,000 people to strong shaking**. Earthquake event was felt for between 5 - 15 seconds in the following 10 areas; DKI Jakarta Province, Sukabumi City, Sukabumi Regency, Bandung Regency, Cianjur Regency, Bogor City, Bogor Regency, Bekasi City, Garut Regency and Bekasi Regency.

The Cianjur Regent has already declared an emergency response status for the earthquake disaster in Cianjur Regency for 30 days, from **21 November to 20 December 2022**. According to the Indonesian National Board for Disaster Management (BNPB), as of 25th November 2022, the impact of earthquake are as below:



310
Deaths



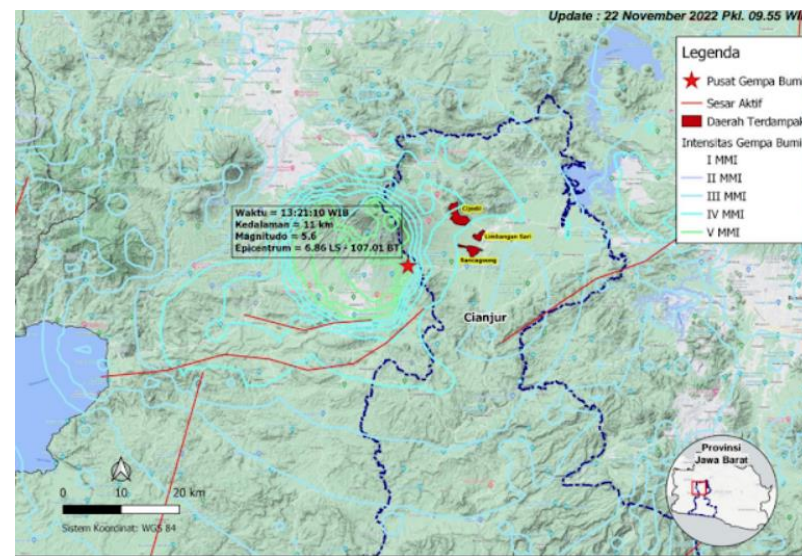
72.525
People Affected
and Displaced



4.630
Injured

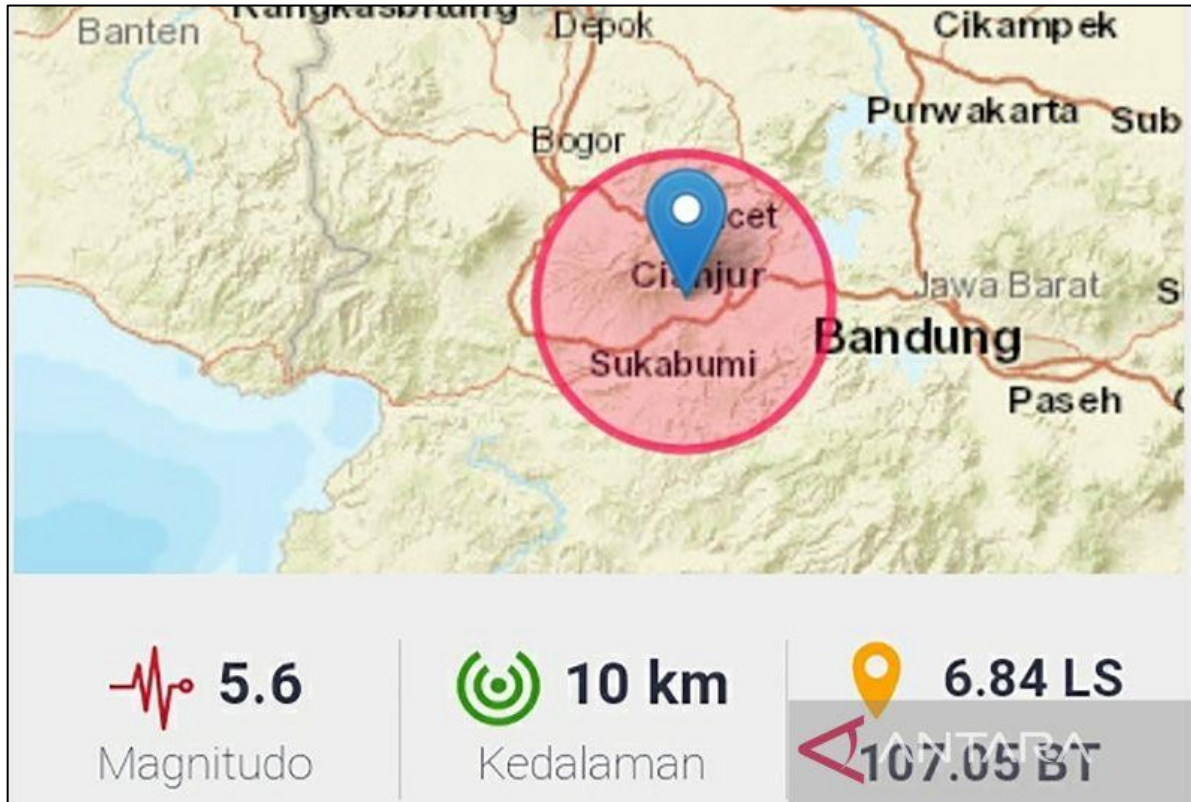


58.049
House Damaged



IMPACTED AREA

12 Sub-districts (Kecamatan) in Cianjur District were affected by the earthquake.



Kecamatan	
① Sukaresmi	⑦ Gekbrong
② Cikalong Kulon	⑧ Warungkondang
③ Pacet	⑨ Cilaku
④ Cugenang	⑩ Sukaluyu
⑤ Cianjur	⑪ Cibeber
⑥ Karangtengah	⑫ Bojong Picung

RAPID RESPONSE TEAM DEPLOYMENT

Habitat Indonesia already deployed Rapid Response Team (RRT) to Cianjur for conducting:

1. Need assessments,
2. Humanitarian coordination with local governments, authority and NGOs,
3. Prepare pathway for prepositioned ESK (Emergency Shelter Kits) and WCK (Wash and Cleaning Kits) distribution,
4. Mapping strategy for further humanitarian intervention in shelter, wash, education and livelihood sectors.



Assessment In Tent area



Observation damaged building



Observation damaged building

RESPONSE STRATEGY

The response strategy has been developed to respond to the urgent and unmet needs of the earthquake affected vulnerable people in the first phase of the emergency and in the recovery phase in providing support for the reconstruction of dignified, safe, and permanent shelter, access to safe and clean water, support to food security, health and nutrition, cash assistance and psychosocial assistance to reduce trauma and ensure personnel recovery of survivors.

The response strategy will also focus on DDR to improve local civil protection structures capacities in targeted communities to better prepare and respond to future disasters.

Humanitarian coordination with local governments, authority and NGOs to cooperate for Emergency Response



Discussion with Survivor to understand Needs and to map strategy for effective response



RESPONSE STRATEGY (BUILD BACK SAFER)

Relief Distribution

(21 Nov to 20 Dec 2022)

Action Plan:

1. Rapid Assessment and finalize area selection
2. Emergency Shelter Kits (ESK) and Wash Cleaning Kits distribution (WCK).
3. Rubble removal Family Kits distribution (wheel borrow).
4. Market assessment for Cash Assistance.

Target:

1. Survival families who are staying in Tent
2. Families who has "Lightly" damaged house



Early Recovery

(21 December to 20 March 2022)

1. Cash and Voucher Assistance (CVA) for house repairs (collaborate with Financial Service Provider (FSP) and building material shops).
2. Cash and Voucher Assistance for Transitional Shelter (collaborate with FSP and building material shops).

Target:

Families who will repair their house by themselves.

Reconstruction

(21 March to 20 December 2022)

1. Housing/Building Quality Assessment.
2. Build resilient community with PASSA and CBDRM training.
3. Retrofitting pilot project and advocacy for PUPR and BNPB for retrofitting program.
4. Safe School programming through retrofitting
5. WASH programming.

Target:

Cianjur Community to have resilient to disaster in future

Rapid Need Assessment (RNA)

The potential project location are in 3 sub-district (kecamatan) and 7 villages (desa) in Cianjur District which are the most affected by the earthquake.

1. **Kecamatan Cugenang:** Desa Sukamulya, Desa Cijedil, Desa Benjot, Desa Cariu, Desa Padaluyu.
2. **Kecamatan Cianjur:** Desa Limbangansari.
3. **Kecamatan Cilaku:** Desa Rancagoong.

Main Findings are as follows:

1. Major Destruction of houses, schools and community centers: For houses with light and moderate damage, people who want to repair and rebuild, they need Wash Cleaning Kit and Emergency Shelter Kit
2. Emergency shelter (only makeshift tents with limited availability of mattresses, and blankets)
3. Overcrowded tents with limited number of latrines (no separate space for man and women), poor hygiene and poor Covid-19 PPE (mask)
4. Lack of water and proper sanitation which makes uncomfortable for girls and women
5. Health service is needed to fill the gap in the role of public health centers at village
6. Without a proper camps coordinator, the management in the camps become messy

Basic Needs for survivors:

1. **Shelter** (providing Emergency Shelter Kit and Wash Cleaning Kit)
2. **WASH** (providing water supply, sanitation, Wash Cleaning Kits)
3. **Health** (health service include physiotherapy)
4. **Camp Management** (shelter management and assistance)
5. **Covid PPE- Mask**

At the emergency response, Habitat Indonesia will focus to distribute 1.250 ESK and WCK at **3 villages of Sukamulya, Benjot, and Padaluyu of Sub-district Cugenang, Cianjur District.**

Emergency Shelter Kits and Wash Cleaning Kit



No	Barang	Qty	Unit
1	Tarpaulin 4x6 m	2	sheet
2	Shovel	1	Unit
3	Mattock	1	Unit
4	Medium Hammer	2	Unit
5	Crowbar	1	Unit
6	Rope 6mm 10 m	3	Roll
7	Gage 5 meter	1	Unit
8	Saw	1	Unit
9	Nails 3"	1	Kg
10	Nails 4"	1	Kg
11	Axes	1	Unit
12	Cloth gloves	1	Pair
13	Grinding Stone	1	Unit
14	Woven Sacks	1	Unit
15	Container 1 kg	2	Unit

Purpose Emergency Shelter Kit (ESK):

- Enable Families to build temporary shelter or tent
- Enable Families to repair their houses so they can rebuild their life

Budget for ESK: Rp. 1,180,000 (USD 79/unit)

The budget contains materials, distribution cost, logistic cost and operation cost to distribute the materials



No	Barang	Qty	Unit
1	Plastic Bucket 15-20 L	1	Unit
2	Jerry Can 10 Liter	1	Unit
3	Trash Bag	1	Pair
4	Mosquito Net	1	Unit
5	Rubber Sweeper	1	Unit
6	Dust Pan	1	Unit
7	Boots	2	Pair
8	Rubber Gloves	4	Pair
9	Brush	2	Pcs

Purpose Wash and Cleaning Kit (WCK):

- Help Survivors to clean themselves and the environment
- Enable Families to clean their houses so they can go back to their existing houses soon

Budget for WCK: Rp. 650,000 (USD 43/unit)

The budget contains materials, distribution cost, logistic cost and operation cost to distribute the materials

STAGE 1: Relief Distribution of ESK and WCK

In the ESK and WCK distribution process, Habitat Indonesia will provide participatory assistance to the survivors. This assistance is intended to:

1. Ensure that all ESK and WCK equipment can be used properly, safely and according to its purpose.
2. Participatory dialogue with the survivors / beneficiaries for good, safe, healthy, clean management of evacuation sites.
3. Encouraging mutual cooperation and initiatives to clean up the debris of houses in a safe, orderly and participatory manner to prepare the stage two project intervention.

As of **25th November 2022**, up to 199 packages of ESK and WCK have already arrived in Cianjur and stored in the joint emergency warehouse of Habitat Indonesia with Human Initiative. The 199 ESK and WCK are part of the relief prepositioning items delivered from two Habitat Indonesia warehouses location in Jakarta and Yogyakarta.



Distribution of ESK and WCK- First Batch



Supervision of Construction of Tents



Implementation Strategy:

Implementation strategy of proposed interventions has been prepared by Habitat Indonesia, as detailed below:

Pathway to Permanence

Habitat for Humanity believes that safe, decent shelter provides the platform upon which much of post-disaster assistance is built: health, water, sanitation, livelihoods, safety, education, etc. To support these crucial processes, the Pathways to Permanence strategy places affected families on a path to durable, permanent shelter solutions using incremental stages as needed (e.g., erecting an emergency shelter, accessing or affirming land rights, improving a transitional shelter solution, defining next steps for a disaster-damaged house or expanding a new core house solution).

Community-Based approach

Collaborations between Habitat Rapid Response Team with local government, NGOs and community members, in order to build ownership to the people affected and create sustainable impact.

Coordination, Advocacy, & Partnership

The coordination are involving:

1. Local government
2. Ministry of Social Affair through Shelter Sub-Cluster coordination.
3. Local organisation – to open partnership in implementation disaster response project and strengthening local capacity.

Covid-19 Prevention

Habitat Indonesia team will manage to implement project activities planned while executing additional mitigation measures to reduce risk of exposure and impact over project activities including communities, partners, volunteers, staffs and others involve. These measures include providing additional Personal Protective Equipment (PPEs) and hygienic packages.

Technical Assistance

Providing technical staff to conduct series of capacity building on Transitional Shelters principles and maintenance, especially to mitigate the major hazards of earthquake, landslide and floods. The project will also conduct socialization and training to engage beneficiaries with basic knowledge of rebuilding back safer.

About Habitat for Humanity Indonesia

Habitat Indonesia has supported more than 163,146 families through direct and indirect housing interventions. Working on its DR3 (Disaster Risk Reduction and Response) framework, Habitat Indonesia has increased communities' capacity in disaster preparedness, water sanitation and hygiene, and resilient construction. Specifically, Habitat Indonesia has responded to numbers of major disasters affecting Indonesia including:

- **2005-2011**, responding national disaster Aceh tsunami, served 8,370 families by new houses construction, house reconstruction and renovation, and community infrastructure development;
- **2006-2008**, responding Yogyakarta earthquake, served 1,345 families by new houses construction, house reconstruction and renovation, and community infrastructure development;
- **February 2007**, responding Jakarta floods, served 1,056 families by house repair;
- **2010-2011**, responding Merapi Volcano eruption in Yogyakarta, served 4,485 families by water network establishment, house repair, toilets construction, and elementary school construction;
- **2018**, responding to triple disasters of earthquake-tsunami-liquefaction by distributing ESK, wash intervention, build 1.200 shelter, 200 houses, 2 schools and 1 community center.
- **2019**, responding Lombok earthquake, served 2,112 families by individual toilets construction, WASH training series, water reservoir and supplies and transitional shelters development;
- **2020**, responding Covid-19 pandemic, served 61,439 families by temporary shelters provision for frontline medical workers, PPE packages distribution and series of capacity buildings for impacted families.
- **2021**, responding Nusa Tenggara Timur (NTT) Cyclone Seroja, served 1,076 families by new house construction, repair houses, temporary shelters provision, clean water access, sanitation. Capacity building for Build Back Safer, Waste Management, Community Based Disaster Risk Management. Emergency Response distribution for Emergency Shelter Kits.

Everyone

Rebuild CIANJUR



We build
strength, stability
and **self-reliance**
through shelter.

Contact Us

Nama Lengkap

Jabatan

email@habitatindonesia.org

081x.xxxx.xxxx

Habitat for Humanity Indonesia - National Office

Jl. Palmerah Utara No.46, Palmerah, Jakarta Barat

DKI Jakarta, Indonesia– 11480

021– 2205.6431

